

SUPPLEMENTARY MAINTENANCE MANUAL

WITH

PARTS LIST

Hydraulic brake option

MODEL: B 6-10 (Kohler)
SERIAL #: 101800-114805
MANUAL # M4-004-00

****IMPORTANT****

READ AND FOLLOW INSTRUCTIONS GIVEN IN
SAFETY AND OPERATIONS SECTIONS, AND
THOSE SECTIONS RELATED TO YOUR SERV-
ICE AND REPAIR RESPONSIBILITIES.



TAYLOR-DUNN
Commercial and Industrial Vehicles Since 1949

2114 W. Ball Rd., Anaheim, CA 92804 (714)956-4040 (FAX) (714)956-0504
Mailing address: P.O. Box 4240, Anaheim, CA 92803

ABOUT THIS MANUAL

This manual provides you with information you need to maintain the optional hydraulic brakes for this vehicle.

We assume that those who will perform maintenance operations are trained vehicle service technicians capable of performing routine maintenance procedures such as changing a tire using a voltmeter and so forth.

We also assume that they have or will attend a training program designed to familiarize them with maintenance of a hydraulic brake system.

This manual contains the following major sections:

SECTION 1: INTRODUCTION

Contains information about how to use this manual.

SECTION 2: SERVICE PROCEDURES

Contains service procedures for the brake system.

SECTION 3: ILLUSTRATED PARTS

Includes an illustration and parts list for the brake system.

NOTATIONAL CONVENTIONS

The following types of notations are used throughout this manual:

⚠ WARNING

A warning alerts you of something that may cause injury to yourself or others. Be sure you exercise special care and follow any instructions provided in a warning message.

⚠ CAUTION

A caution informs you of something that may cause damage to the vehicle. Be sure you exercise special care and follow any instructions provided in a caution message.



A note provides additional information about a subject.

This section explains how to perform the scheduled maintenance procedures on the optional hydraulic brake system. Refer to the standard service manual for your truck for all other service information. Vehicle maintenance or repairs should only be performed by a qualified mechanic.

- ◆ Maintenance guidelines.
- ◆ Detailed maintenance procedures.
- ◆ Parts list

MAINTENANCE GUIDELINES

- Allow only qualified and authorized personnel to maintain repair adjust and inspect the vehicle.
- Before starting any repairs or maintenance immobilize the vehicle by turning the ignition off, setting the key switch to the "OFF" position, removing the key and setting the park brake.
- Disconnect the battery leads before working on or disconnecting any electrical component or wire.
- Block the chassis with jack stands before working under a raised vehicle.
- Conduct vehicle performance checks in an authorized area where safe clearance exists.
- Before starting the vehicle follow the recommended safety procedures in the standard service manual for your truck.
- Avoid fire hazards and have fire protection equipment present in the work area. Do not use an open flame to check level or leakage of fuel, battery electrolyte, or coolant. Do not use open pans of fuel or flammable fluids for cleaning parts.
- Ventilate the work area properly.
- Regularly inspect and maintain in a safe working condition, brakes, steering mechanisms, speed and directional control mechanisms, warning devices, lights, governors, guards and safety devices.
- Check the fuel system for leaks and condition of parts. If a leak is found take action to prevent the use of the vehicle until the leak has been eliminated.
- Inspect and maintain battery limit switches, protective devices, electrical conductors and connections in conformance with Taylor-Dunn's recommended procedures.
- Keep the vehicle in clean condition to minimize fire hazards and facilitate detection of loose or defective parts.

BRAKE SYSTEM

CAUTION

Do not drive the vehicle if any worn or broken part is detected in any part of the brake system. The cause of the damage must be repaired immediately.

The rear brakes are hydraulic drum brakes. They are manual adjusting type and will require periodic adjustment to assure safe operation and maximum brake life.

Servicing the rear brake assembly consists of;

- ◆ Adjusting the service brakes
- ◆ Replacing the brake drum and shoes
- ◆ Adjusting the parking brake

The front brakes are hydraulic disc. Hydraulic disk brakes are not adjustable and only require periodic inspection to insure that they are in good operating condition.

➤ REAR BRAKES

ADJUSTING THE REAR BRAKES

1. Raise the rear end and support it.

WARNING

Always use jack stands when supporting the vehicle.

2. Remove the wheel and tire assembly.
3. Insert a brake adjusting spoon into the adjusting slot in the brake drum and turn the star adjusting nut until the brakes lock the wheel.
4. Now back off the star adjusting nut until the wheel spins freely with a minimum of drag.
5. Repeat steps 2 to 4 for the other side.

6. Lower the vehicle and test drive.

NOTE → *If the rear brakes do not brake evenly then repeat steps 1- 6.*

REPLACING THE BRAKE DRUM

NOTE → *It is recommended to replace drums as a set.*

1. Raise the vehicle and support it.

Always use jack stands when supporting the vehicle.

2. Remove the wheel and tire assembly.
3. Remove the brake drum.

NOTE → *If the drum is difficult to remove it may be necessary to back off the brake shoe adjustment before removing the brake drum.*

NOTE → *Make sure the new drum is clean and dry.*

4. Install the new brake drum.
5. Adjust the brakes (both sides).
6. Install the wheel and tire assembly.
7. Remove the jack stands and lower the vehicle.
8. Test drive the vehicle.

REPLACING THE BRAKE SHOES

1. Raise the vehicle and support it.

WARNING

Always use jack stands when supporting the vehicle.

2. Remove the wheel and tire assembly.
3. Remove the brake drum.
4. Remove the brake shoe retracting springs.
5. Remove the hair pins from the mechanical actuating lever.
6. Remove the brake shoe hold down spring from each shoe.

7. Remove the brake shoes and adjusting screw assembly.



Make sure you note the orientation of the adjusting screw assembly when removing from brake assembly.

8. Disassemble and clean the adjusting screw assembly.
9. Apply Hi-Temp grease to the adjusting screw assembly, the hold down and retracting spring contacts on the brake shoes and the torque spider contact points on the brake shoes.
10. Reassemble the brakes in reverse order.
11. Adjust the brakes
12. Install the wheels.
13. Lower and road test the vehicle.

➤ FRONT BRAKES

The front brake rotors are an integral part of the front hub. If the rotors are damaged or worn the front hub must be replaced.

REPLACING THE BRAKE PADS

1. Raise the front end and support it.

⚠ WARNING

Always use jack stands when supporting the vehicle.

2. Remove the front wheels.
3. Remove the two 1/4" caliper retaining bolts.



At this point there is nothing retaining the brake cylinder. Do not let it hang by the brakes hose.

4. Inspect the spacers for wear and replace as necessary.
5. Replace the spacer bushings.

6. Re-assemble the brake using new brake pads.

⚠ WARNING

The 1/4" gr. 8 lock nuts for the caliper bolts must be replaced.

7. Test drive

REPAIRING THE BRAKE BODY

1. Remove the brake body.
2. Carefully remove the two pistons, rubber boots and O-rings.

⚠ CAUTION

The pistons are very brittle and break easily

3. Clean and dry the brake body completely.

⚠ CAUTION

Make sure there are no contaminants left in the brake body.

4. Inspect the interior of the brake body. If any damage or wear is found it must be replaced.
5. Re-assemble the brake body using clean DOT 5 brake fluid as a lubricant.



Use tool #41-350-13 to install the rubber boots

6. Install the brake body.

⚠ WARNING

The 1/4" gr. 8 lock nuts for the caliper bolts must be replaced.

7. Bleed the brakes.
8. Test drive

➤ PARKING BRAKE

PRIMARY ADJUSTMENT

1. Block the wheels.
2. Release the parking brake
3. Turn the parking brake handle to adjust.
4. The brake should be adjusted to hold firmly but with no drag when released.

SECONDARY ADJUSTMENT



You must adjust the rear brakes before performing this adjustment .

1. Block the wheels.
2. Release the parking brake.
3. Back off the primary adjustment (previous section).
4. Loosen the two jam nuts on the turn buckle assembly at the equalizer.
5. Turn the turn buckle assembly until the brake cables are snug with no brake drag.
6. Tighten the two jam nuts.



It will be necessary to readjust the primary parking brake adjustment.

PARKING BRAKE CABLES

Visually inspect the brake cables for signs of wear or cracks. Visually inspect the end connections for broken wire strands.

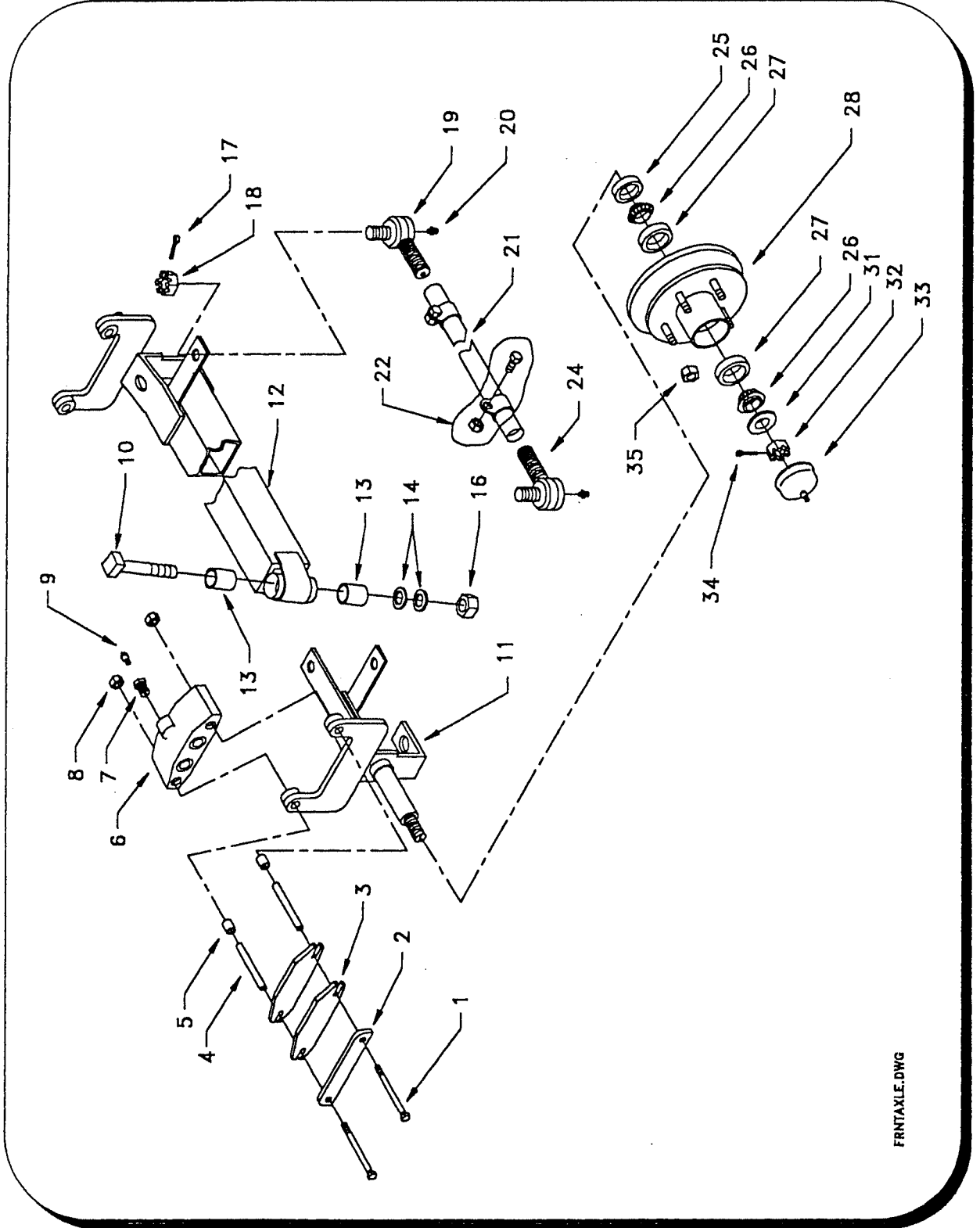


Replace any worn or damaged cables immediately.

ILLUSTRATED PARTS LIST

**B 6-10 Kohler
Hydraulic brake supplement**

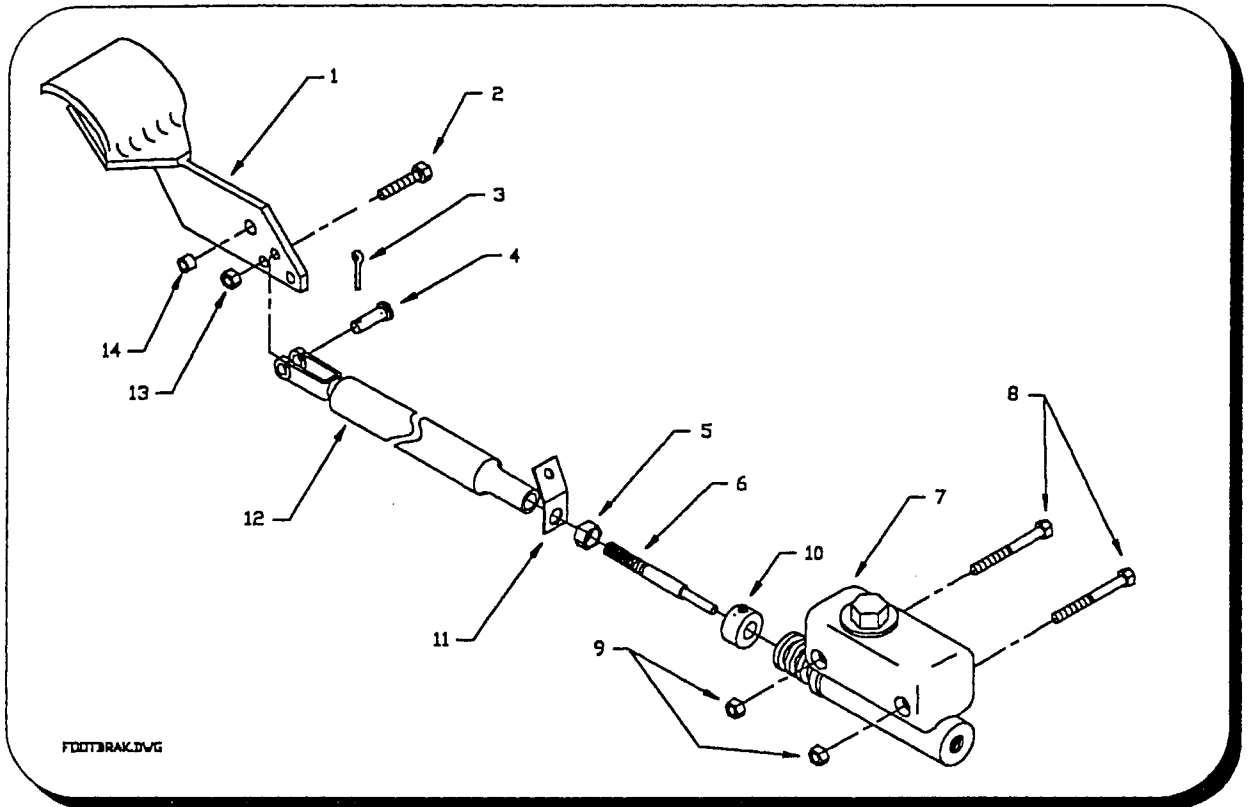
FRONT AXLE



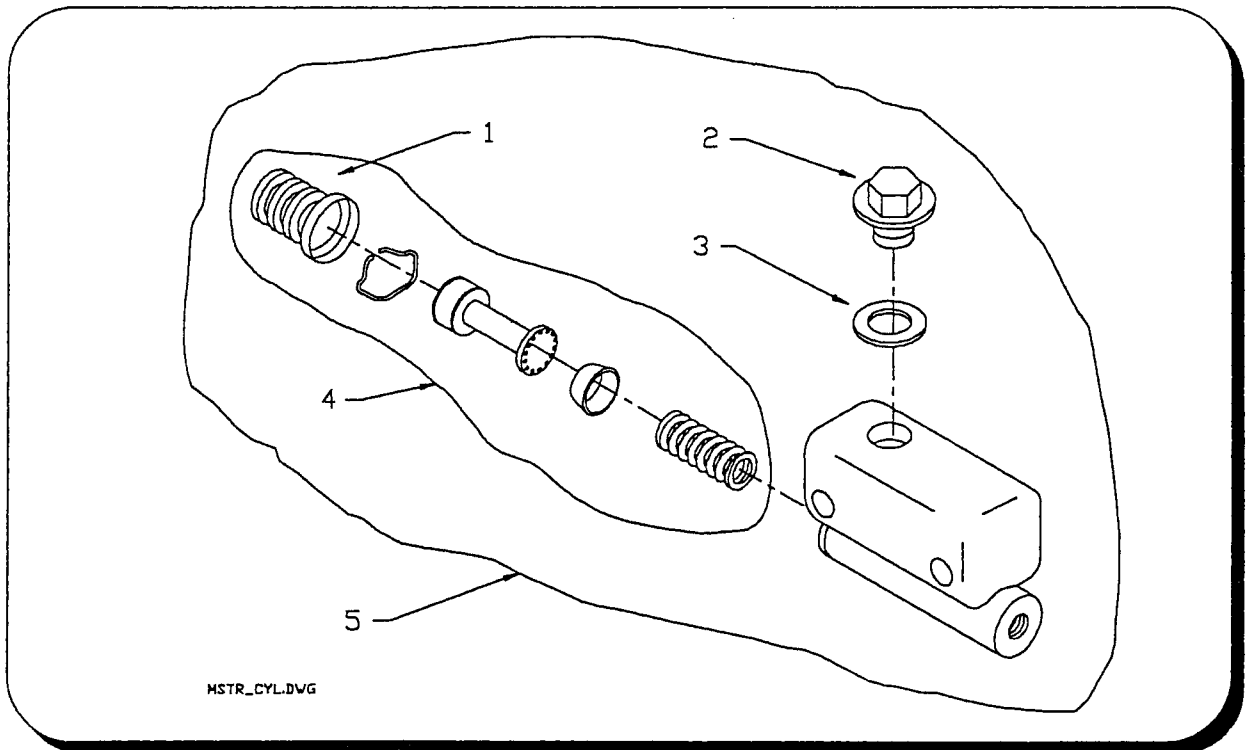
FRNTAXLE.DWG

FRONT AXLE			
Item #	Part #	Description	QTY
1	88-067-21	Brake body bolt (grade 8)	4
2	41-350-51	Brake pad backing plate	2
3	41-348-70	Brake pad	4
4	41-348-52	Spacer	4
5	32-240-40	Bushing	4
6	41-350-70	Brake body (Rebuild kit 41-350-66)	2
7	99-588-01	Brake bleeder fitting	2
8	88-069-82	Brake body nut (grade 8) DO NOT REUSE!	4
9	99-588-00	Brake bleeder valve	2
10	21-020-15	King pin	2
11	14-210-88	Left (driver) side steering yoke	1
11	14-210-89	Right (passenger) steering yoke	1
12	15-210-00	Front axle weldment	1
13	32-240-55	Upper/lower king pin bushing	2
14	97-180-55	Thrust washer	4
16	88-189-81	King pin nut	2
17	88-527-11	1/8 x 1 cotter pin	2
18	88-159-85	Ball joint nut	2
19	86-501-99	Ball joint (right thread)	1
20	87-074-00	Grease fitting	2
21	18-041-00	Tie rod	1
22	86-510-00	Ball joint clamp w/nut and bolt	2
24	86-501-98	Ball joint (left thread)	1
25	45-338-00	Grease seal	2
26	80-017-00	Inner/Outer wheel bearing	4
27	80-103-00	Inner/Outer race	4
28	12-158-10	Front hub (w/rotor),Nnote: rotorN/A separately	2
31	88-228-61	3/4 SAE flat washer	2
32	88-239-85	Wheel bearing nut	2
33	92-104-00	Wheel bearing cap	2
34	88-527-11	Cotter pin	2
35	97-236-00	Wheel nut	10

FOOT BRAKE LINKAGE

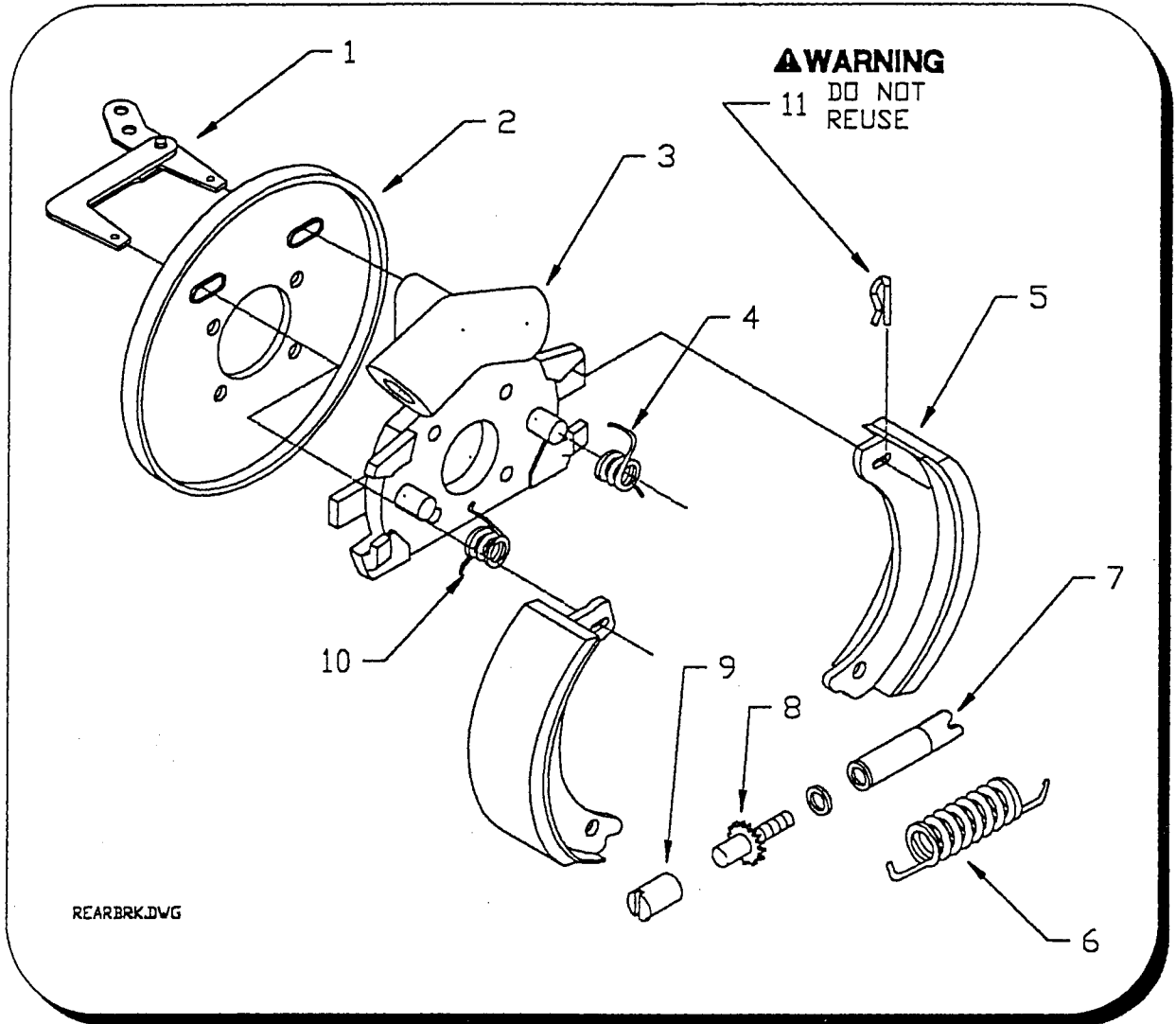


MASTER CYLINDER



FOOT BRAKE LINKAGE			
ITEM #	PART #	DESCRIPTION	QTY
1	05-210-97	Brake pedal	1
2	88-100-11	3/8 x 1 NC hex bolt	1
3	88-517-09	Cotter pin	1
4	96-772-00	Clevis pin	1
5	88-119-80	3/8 NF hex bolt	1
6	50-009-00	Push rod	1
7	99-510-02	Master cylinder assembly.	1
8	88-101-20	3/8 x 3 grade 5 hex bolt	2
9	88-109-81	3/8 NC lock nut	2
10	17-104-00	Collar	1
11	06-210-03	Return spring mounting clip	1
12	00-210-08	Push rod	1
13	88-109-81	3/8 NC lock nut	1
14	32-240-40	Bushing	1
MASTER CYLINDER			
1	99-510-51	Boot	1
2	99-510-52	Cap	1
3	99-510-53	Gasket	1
4	99-510-61	Rebuild kit	1
5	99-510-01	Master cylinder assembly	1

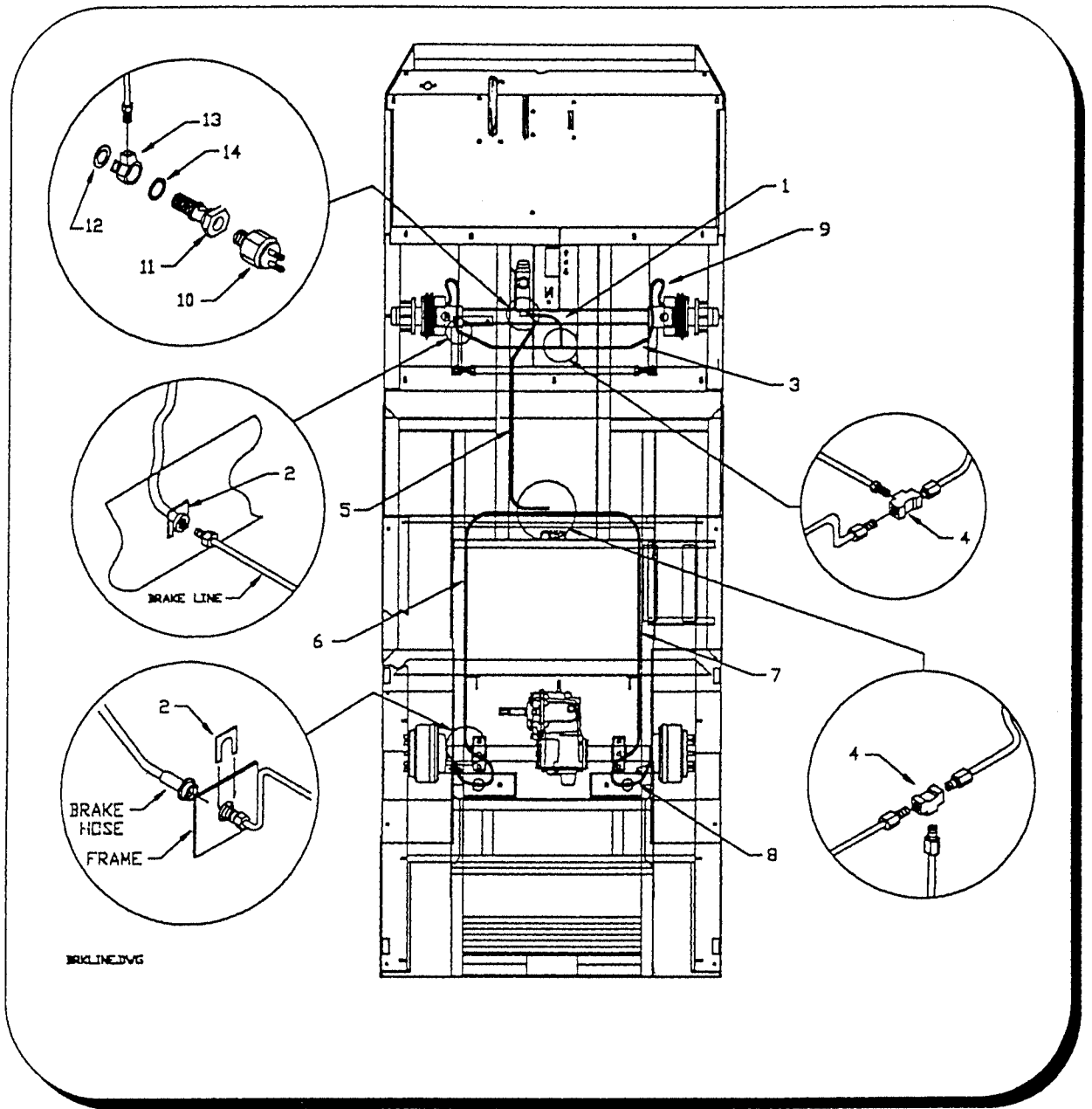
REAR BRAKES



EAR BRAKES			
ITEM #	PART #	DESCRIPTION	QTY
1	41-347-15	Parking brake actuator	2
2	41-347-00	Backing plate	2
3	41-347-27	Spider, w/wheel cylinder	2
4	85-411-10	Torsion spring (green)	2
5	41-635-00	Brake shoes	2
6	85-215-00	Spring	2
7	41-347-33	Adjustment body	2
8	41-347-31	Star wheel adjuster	2
9	41-347-30	Socket	2
10	85-411-15	Torsion spring (red)	2
11	41-347-34	Parking brake actuator retaining clip. DO NOT REUSE!	4

-- 99-507-00 REPAIR KIT

BRAKE LINES AND HOSES



BRAKE LINES AND HOSES			
ITEM #	PART #	DESCRIPTION	QTY
1	99-603-54	Brake line	1
2	99-576-00	Hose retaining clip	4
3	99-603-53	Brake line, front	2
4	99-564-00	T-Union	2
5	99-607-51	Brake line	1
6	99-605-55	Brake line, left rear	1
7	99-605-56	Brake line, right rear	1
8	99-580-10	Rear brake hose	2
9	99-580-20	Front brake hose	2
10	71-110-00	Brake light switch	1
11	99-578-00	Master cylinder fitting	1
12	99-572-00	Copper washer	1
13	99-565-00	Y-Fitting	1
14	99-571-00	Copper washer	1