

MAINTENANCE INSTRUCTIONS

AND

PARTS LIST

Model:	C
Serial No.:	16000 - 22334
Year:	1970 - 1973
Manual:	

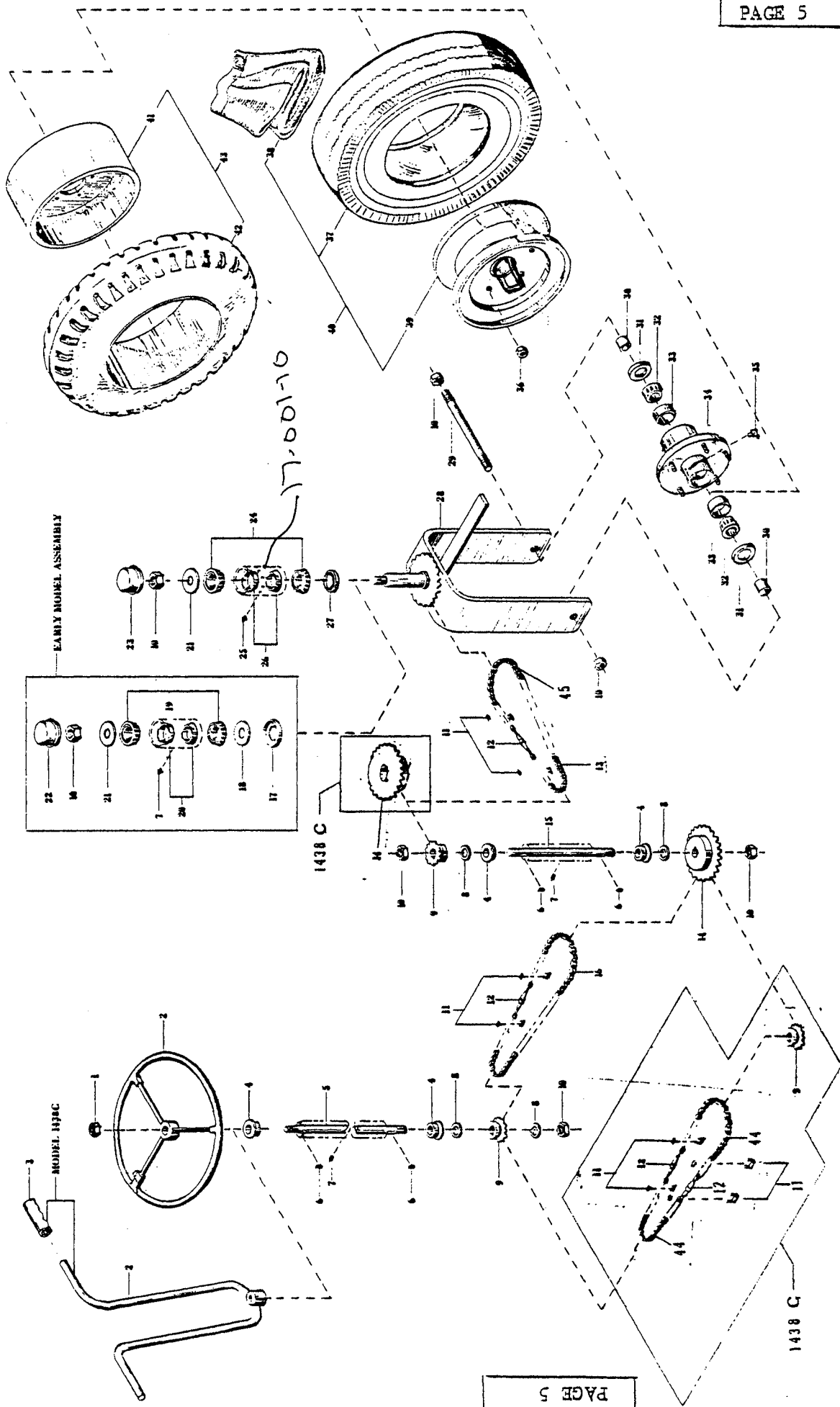
- IMPORTANT -

READ AND FOLLOW INSTRUCTIONS GIVEN IN THE SAFETY & OPERATIONS SECTIONS, AND THOSE RELATED TO YOUR SERVICE AND REPAIR RESPONSIBILITIES.



TAYLOR-DUNN®
Commercial and Industrial Vehicles Since 1949

2114 West Ball Road, Anaheim, CA 92804 (714) 956-4040 FAX (714) 956-0504
Mailing Address: P.O. Box 4240, Anaheim, California 92803



SECTION J1
PAGE 5

NO.		DESCRIPTION	LENGTH	QUAN.	REVISED DATE	REVISION
TOL. FRAC.	+	DEC.				
SCALE		NONE				
DRAWN BY		4-10-4				
DATE		1-24-73				

FIGURE 3		FRONT FORK & STEERING	
SECTION J1		MODEL C	

TAYLOR DUNN MFG. CO.
2114 West Ball Rd.
Anaheim, Calif.

FIGURE NO. 3
FRONT AXLE STEERING & TIRES

FIG. I.D. NO.	T-D PART NO.	DESCRIPTION	QTY. REQ.
3-1	88-199-92 82	Nut 5/8" N.F. (Hex Jam)	1
3-2	19-001-00	Steering Wheel	1
3-3	19-122-00	Handle Bar-Steering Model 1438C Only	1
3-4	80-400-00	Ball Bearing - 3/4"	4
3-5	20-010-00	Shaft-Steering 3/4" x 32½" With Taper	1
3-6	97-100-00	Woodruff Key - 3/16"	4
3-7	87-071-00	Grease Fitting (3/16" Drive)	2 or 3
3-8	16-405-00	Spacer 3/4" I.D. x 1/8 Thick	0 or 4
3-9	30-002-00	Sprocket 11T #40 Chain 3/4" Bore	2
3-10	88-229-81	Lock Nut 3/4" N.C. (Hex)	6
3-11	30-400-00	Link - Master #40	4 or 6
3-12	96-900-00	Turnbuckle	2 or 3
3-13	30-241-00	Chain - #40 - 29½" Long	1
3-14	30-005-00	Sprocket 22T #40 Chain 3/4" Bore	1
3-15	20-144-00	Shaft - Jack 3/4" x 13" Long	1
3-16	3-245-00	Chain - #40 - 36½" Long	1
3-17	80-704-00	Dust Ring for 1½" Bearing	1
3-18	80-804-00	Dust Washer for 1½" Bearing	1
3-19	80-010-00	Tapered Roller Bearing 1½" I.D.	2
3-20	80-100-00	Tapered Bearing Race	2
3-21	88-228-60	Washer 3/4" Flat	1
3-22	92-100-00	Dust Cap for 1½" Bearing	1
3-23	92-105-00	Dust Cap	1
3-24	80-011-00	Bearing - Tapered Roller 1½"	2
3-25	87-074-00	Grease Fitting ½"-28 Straight	1
3-26	80-102-00	Bearing Race for 1½" Tapered Bearing	2
3-27	45-307-00	Grease Seal	1
3-28	14-082-10	Fork	1
3-29	15-010-00	Axle Bolt 3/4" x 9½"	1
3-30	16-010-00	Spacer 3/4" I.D. x 1½" Long	2

FIG. I.D. NO.	T-D PART NO.	DESCRIPTION	QTY. REQ.
3-31	45-308-00	Oil Seal (Front Wheel)	2
3-32	80-015-00	Tapered Roller Bearing 3/4" I.D.	2
3-33	80-105-00	Tapered Bearing Race For 3/4" I.D. Bearing	2
3-34	12-120-00	Wheel Hub	1
3-35	87-050-00	Grease Fitting 1/4" - 28 THD. (90°)	1
3-36	97-235-00	Lug Nut 7/16" Tapered	5
3-37	10-074-00	Tire, 400 x 8 Four Ply Super Rib	1
3-37	10-078-00	Tire, 400 x 8 Six Ply Steel Guard	1
3-37	10-075-00	Tire, 400 x 8 Four Ply Super Rib - Tubeless	1
3-38	13-989-00	Valve Stem For Tubeless Tires	1
3-38	11-030-00	Tube - 400 x 8	1
3-39	12-011-00	Wheel for 400 x 8 & 500 x 8 Tire (Five 1/2" Holes on 4 1/2" Bolt Circle)	1
3-39	12-012-00	Wheel For 400 x 8 Tubeless Tire (Five 1/2" Holes On 4 1/2" Bolt Circle)	1
3-40	13-731-00	Tire, Tube & Wheel 400 x 8 Four Ply Super Rib Tire (Five 1/2" Holes on 4 1/2" Bolt Circle)	1
3-40	13-738-00	Tire, Tube & Wheel 400 x 8 Six Ply Steel Guard Tire (Five 1/2" Hole on 4 1/2" Bolt Circle)	1
3-40	13-734-00	Tire & Wheel - 400 x 8 Four Ply Super Rib - Tubeless Tire (Five 1/2" Holes On 4 1/2" Bolt Circle)	1
3-41	12-054-00	Wheel For 16 1/2 x 11 1/2 Solid Cushion Tire (Five 1/2" Holes On 4 1/2" Bolt Circle)	1
3-41	12-050-00	Wheel For 16 x 4 x 12-1/8" Solid Cushion Tire (Five 1/2" Holes on 4 1/2" Bolt Circle)	1
3-42	10-261-00	Tire - Solid Extra Cushion All Service 16x4x11 1/2	1
3-42	10-250-00	Tire - Solid Cushion, Smooth 16x4x12-1/8"	1
3-43	13-954-10	Tire & Cast Iron Wheel 16 1/2 x 4 x 11 1/2 Solid Extra Cushion All Service Tire (Five 1/2" Holes on 4 1/2" Bolt Circle)	1
3-43	13-952-10	Tire Cast Iron Wheel 16 x 4 x 12-1/8 Solid Cushion Tire (Five 1/2" Holes on 4 1/2" Bolt Circle)	1
3-44	30-247-00	Chain - #40 - 16 1/2 Long (Model 1438C Only)	2
3-45	30-244-00	Chain - #40 - 32 1/2 Long (Model 1438C Only)	1

TAYLOR DUNN MFG. CO.
2114 West Ball Rd.
Anaheim, Calif.

"POWER TRACTION"
REAR AXLE, MOTOR & BRAKES

FIGURE 5
SECTION J2

LENGTH | QUAN. | REVISED DATE | REVISION

NO.	DESCRIPTION
TOL. FRAC. ±	DEC. ±
SCALE	NONE
DRAWN BY	ARM/D
DATE	3-7-72

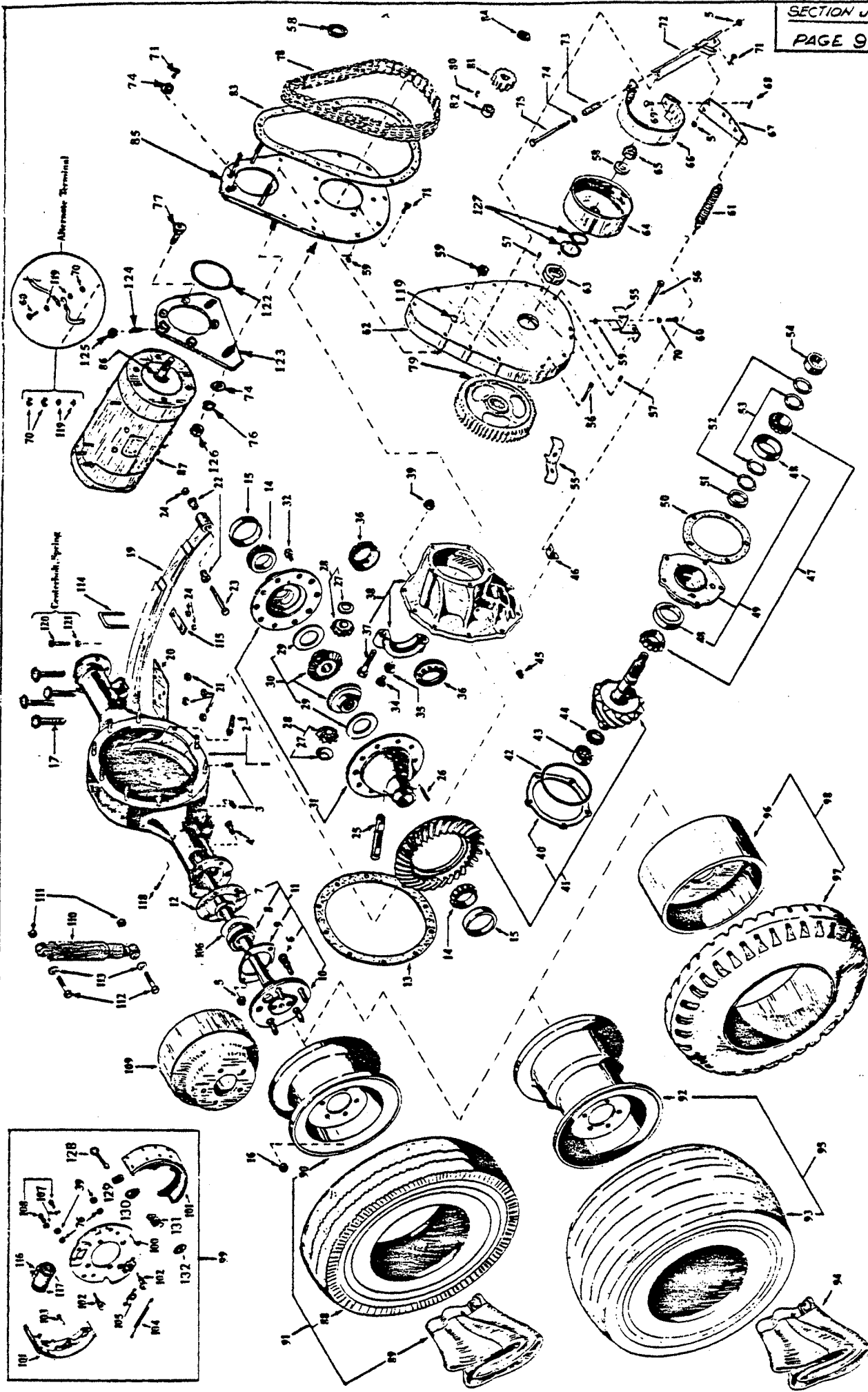


FIGURE 5
POWER TRACTION DRIVE AXLE

FIG. I.D. NO.	T-D PART NO.	DESCRIPTION	QTY. REQ.
5-1	41-290-00	Housing Rear Axle With Bolts	1
5-2	96-330-00	Bolt Differential Carrier To Housing	10
5-3	41-997-00	Drain and Level Plug (1/8" Pipe)	2
5-4	88-100-11	Hex Head Cap Screw 3/8" x 1" N.C.	8
5-5	88-109-81	Lock Nut 3/8" n.c. (Hex)	10
5-6	96-331-00	Bolt - 1/2" N.F. (Spec.) Rear Hub	10
5-7	32-509-00	Retainer Ring Rear Axle Bearing	2
5-8	80-505-00	Rear Axle Ball Bearing (Requires 32-509-00)	2
5-9	32-511-00	Retainer Plate Rear Axle	2
5-11	41-163-11	Axle Assembly w/Axle, Retainer Ring, Retainer Plate & Bearing (14-1/8" Long) Left Side	1
5-11	41-162-11	Axle Assembly w/Axle, Retainer Ring, Retainer Plate & Bearing (11-5/8" Long) Right Side	1
5-12	32-512-00	Retainer Spacer (Used only without Hydraulic Brakes)	2
5-13	45-042-00	Gasket (Housing to Differential Carrier)	1
5-14	80-511-00	Tapered Roller Bearing, Timken LM 501349, I.D. 1.625. Use w/80-127-00 Bearing Race	2
5-14	80-512-00	Tapered Roller Bearing, Timken LM 603049, I.D. 1.7812. Use w/80-128-00 Bearing Race.	2
5-14	80-513-00	Tapered Roller Bearing, Timken LM 102949, I.D. 1.7812. Use w/80-129-00 Bearing Race.	2
5-15	80-127-00	Tapered Bearing Race, Timken LM 501310, O.D. 2.891. Use w/Bearing 80-511-00	2
5-15	80-128-00	Tapered Bearing Race, Timken LM 60311 O.D. 3.0625. Use w/Bearing 80-512-00	2
5-15	80-129-00	Tapered Bearing Race, Timken LM 102910 O.D. 2.8910. Use w/bearing 80-513-00	2
5-16	97-236-00	Nut 1/2" N.F. (Lug)	10

FIGURE 5
POWER TRACTION DRIVE AXLE

FIG. I.D. NO.	T-D PART NO.	DESCRIPTION	QTY. REQ.
5-24	88-149-81	Lock Nut $\frac{1}{2}$ " N.C. (Hex)	3 or 4
5-25	41-700-00	Differential Pinion Shaft	1
5-26	41-701-00	Pin	1
5-27	41-702-00	Thrust Washer - Differential Pinion Shaft	2
5-28	41-703-00	Differential Shaft Pinion Kit (Two Differential Gears and Two Thrust Washers)	1
5-29	41-704-00	Thrust Washer-Differential Side Gear	2
5-30	41-705-00	Differential Side Gear Kit (Two Differential Side Gear and Two Thrust Washers)	1
5-31	41-712-00	Differential Gear Case Assembly (Small Carrier Bearing 1.628" I.D.)	1
5-31	41-713-00	Differential Gear Case Assembly (Large Carrier Bearing 1.784" I.D.)	1
5-32	96-243-00	7/16 x 7/8 N.F. Hex Head Bolt	10
5-33		Intentionally left blank	
5-34	88-080-04	Hex Head Cap Screw 5/16" x 3/8" N.C.	2
5-35	41-706-00	Nut Lock, Differential Bearing Adjustment w/30 Angle Tab. Use w/41-707-00 or 41-708-00 Diff. Brg. Adjustment Nuts	2
5-35	41-706-50	Nut Lock, Differential Bearing Adjustment w/Right Angle Tab w/Last Bend 1/2" Long. Use W/41-707-50 Diff. Brg. Adj. Nut	2
5-35	41-706-51	Nut Lock, Diff. Brg. Adjustment W/right Angle Tab w/Last Bend 1/4" Long. Use w/41-708-50 Diff. Brg. Adj. Nut	2
5-36	41-707-00	Nut, Differential Bearing Adjustment, 2 15/16 O.D. 2 Oblong Locking Holes, Use w/Timkin LM 501349 Bearing	2
5-36	41-707-50	Nut, Differential Bearing Adjustment, 2 15/16 O.D., Round Locking Holes. Use w/Timken LM 102949 Bearing	2

FIGURE 5
POWER TRACTION DRIVE AXLE

FIG. I.D. NO.	T.D. PART NO.	DESCRIPTION	QTY. REQ.
5-36	41-708-00	Nut, Differential Bearing Adjustment 3 1/8 O.D., Oblong Locking Holes. Use w/Timken LM 603049 Bearing	2
5-36	41-708-50	Nut, Differential Bearing Adjustment 3 1/8 O.D. Round Locking Holes. Use w/Timken LM 603049 Bearing	2
5-38	41-709-00	Differential Carrier Assembly (For Small Carrier Bearing 1.784" I.D.)	1
5-38	41-710-00	Differential Carrier Assy. (For Large Carrier Bearing 1.784" I.D.)	1
5-39	88-119-80	Nut-3/8" N.F. (HEX)	14
5-40	41-711-00	Shim-Drive Pinion Bearing	1 to 3
5-41	31-235-00	Ring and Pinion Gear Set 2.75 Ratio	1
5-41	31-236-00	Ring and Pinion Gear Set 3.40 Ratio	1
5-41	31-237-00	Ring and Pinion Gear Set 3.25 Ratio	1
5-41	31-238-00	Ring and Pinion Gear Set 3.50 Ratio	1
5-41	31-239-00	Ring and Pinion Gear Set 5.43 Ratio	1
5-41	31-234-00	Ring and Pinion Gear Set 3.00 Ratio	1
5-42	80-702-00	"O" Ring-Drive Pinion Bearing Retainer	1
5-43	80-555-00	Ball Bearing-Rear, Pinion Pilot	1
5-44	41-714-00	Driving Pinion Pilot Bearing Retainer	1
5-45	41-996-00	Plug-(Level) 1/2" with Recessed Top	1 or 3
5-46	91-509-00	Spring Clip	0 or 1
5-47	80-554-00	Tapered Roller Bearing-Pinion Shaft	2
5-48	80-125-00	Tapered Bearing Race-Pinion Shaft	2
5-49	41-715-10	Pinion Bearing Case Assy. & Bearing Races	1
5-50	45-021-00	Gasket Gear Case To Pinion Bearing Assy.	1
5-51	16-415-00	Spacer Pinion Shaft (.440" Thick)	1
5-52	16-410-00	Spacer Pinion Shaft (.018" Thick)	2 to 6
5-53	16-411-00	Spacer Pinion Shaft (.005" Thick)	2 to 6
5-54	16-414-00	Spacer Sprocket (.500" Thick)	1
5-54	16-417-00	Spacer Pinion Shaft (.340" Thick)	1
5-55	41-371-00	Brake Alignment Bracket	2
5-56	88-080-20	Hex Head Cap Screw 5/16" x 3" N.C.	9
5-57	41-989-00	Plug (Filler Level and Drain) 1/2" N.P.T.	2
5-58	88-228-61	Washer 3/4" S.A.E.	2
5-59	88-089-81	Lock Nut 5/16" N.C. (Hex)	14
5-60	88-080-11	Hex Head Cap Screw 5/16" x 1" N.C.	2
5-61	85-270-00	Extension Spring 1 1/2" O.D. X 4 3/8" Free Length	0 or 1

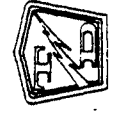
FIGURE 5
POWER TRACTION DRIVE AXLE

FIG. I.D. NO.	T-D PART NO.	DESCRIPTION	QTY. REQ.
5-62	43-201-00	Gear Case Cover	1
5-63	45-331-00	Oil Seal-Gear Case To Pinion	1
5-64	41-532-00	Brake Drum (Splined)	1
5-65	97-250-00	Nut-Pinion 3/4"-20 Extra Fine Thread	1
5-66	41-661-00	Full Brake Band for 6" Drum	1
5-66	41-660-00	Brake Band (1/2 Band) For Drive Shaft Brake	1
5-67	50-656-00	Brake Lever Arm	1
5-68	88-517-11	Cotter Pin 3/32" x 1"	1
5-69	96-771-00	Clevis Pin 3/8" x 3/4" Face to Hole	1
5-70	88-089-80	Nut - 5/16" N.C. (Hex)	10
5-71	88-100-13	Hex Head Cap Screw 3/8" x 1 1/4" N.C.	7
5-72	41-372-00	Brake Mounting Bracket	1
5-73	85-060-00	Compression Spring 5/8" O.D. x 2 1/2" Long	1
5-74	88-108-60	Washer 3/8" Flat Cut	4
5-75	88-100-24	Hex Head Cap Screw 3/8" x 4" N.C.	1
5-76	88-108-62	Lockwasher 3/8"	7
5-77	88-103-09	Flat Head Socket Cap Screw 3/8"x 3/4" NC	4
5-78	30-506-00	Chain-36 Links (For 42 Tooth Sprocket)	1
5-78	30-507-00	Chain-41 Links (For 59 Tooth Sprocket)	1
5-78	30-508-00	Chain-48 Links (For 81 Tooth Sprocket)	1
5-79	30-091-00	Sprocket-42 Tooth With Splined Hub	1
5-79	30-092-00	Sprocket-59 Tooth With Splined Hub	1
5-79	30-093-00	Sprocket-81 Tooth With Splined Hub	1
5-80	97-100-00	Woodruff Key - 3/16"	1
5-81	30-080-00	Sprocket-15 Tooth x 3/4" Bore	1
5-82	17-110-10	Shaft Collar-3/4" With Keyway	1
5-83	45-002-00	Gasket-Gear Case Cover	1
5-84	88-239-82	Jam Nut-3/4" N.F. (Hex)	1
5-85	44-352-53	Gear Case Back Plate (Angle Motor Mount) Adjustable	1
5-85	44-352-52	Gear Case Back Plate (Vertical Motor Mount) Adjustable	1
5-86 and 5-87		SEE SECTION J2M	

FIGURE 5
POWER TRACTION DRIVE AXLE

FIG. I.D. NO.	T-D PART NO.	DESCRIPTION	QTY. REQ.
5-88	10-074-00	Tire, 4.80 x 8, Four Ply Super Rib	2
5-88	10-078-00	Tire, 4.80 x 8, Six Ply Steel Guard	2
5-88	10-075-00	Tire, 4.80 x 8, Four Ply Super Rib-Tubeless	2
5-88	10-076-00	Tire, 4.80 x 8, Four Ply Knobby-Tubeless	2
5-89	13-989-00	Valve Stem for Tubeless Tire	2
5-89	11-030-00	Tube -4.80 x 8"	2
5-90	12-011-00	Wheel for 4.80x 8 & 500 x 8 Tire (Five 1/2" Holes on 4 1/2" Bolt Circle)	2
5-90	12-012-00	Wheel for 4.80x 8 Tubeless Tire (Five 1/2" Holes on 4 1/2" Bolt Circle)	2
5-91	13-731-00	Tire, Tube & Wheel, 4.80 x 8, Four Ply Super Rib Tire (Five 1/2" Holes on 4 1/2" Bolt Circle)	2
5-91	13-738-00	Tire, Tube & Wheel, 4.80 x 8, Six Ply Steel Guard Tire (Five 1/2" Holes on 4 1/2" Bolt Circle)	2
5-91	13-734-00	Tire & Wheel, 4.80 x 8, Four Ply Supber Rib-Tubeless Tire (Five 1/2" Holes on 4 1/2" Bolt Circle)	2
5-96	12-054-00	Wheel for 16 1/2" x 11 1/2" Solid Cushion Tire (Five 1/2" Holes on 4 1/2" Bolt Circle)	2
5-96	12-050-00	Wheel for 16 x 4 x 12 1/8" or 17 x 4 1/2 x 12 1/8" Solid Cushion Tire. (Five 1/2" holes on 4 1/2" Bolt Circle)	2
5-97	10-261-00	Tire, Solid Xtra Cushion, All Service 16 1/2 x 4 x 11 1/2"	2
5-97	10-256-00	Tire, Solid Xtra Cushion, All Service 17 x 4 1/2 x 12 1/8"	2
5-97	10-250-00	Tire, Solid Cushion, Smooth 16 x 4 x 12 1/8" 12 1/8	2
5-98	13-954-10	Tire & Cast Iron Wheel 16 1/2 x 4 x 11 1/2" Solid Extra Cushion, All Service Tire (Five 1/2" Holes on 4 1/2" Bolt Circle)	2
5-98	13-959-19	Tire Cast Iron Wheel 17 x 4 1/2 x 12 1/8" Solid Extra Cushion, All Service Tire (Five 1/2" Holes on 4 1/2" Bolt Circle)	2

FIG. I.D. NO.	T-D PART NO.	DESCRIPTION	QTY RE
5-98	13-952-10	Tire Cast Iron Wheel 16 X 4 X 12-1/8 Solid Cushion Tire (Five 1/2" Holes On 4 1/2" Bolt Circle)	2
5-99	41-346-98	Brake Backup Plate Assembly With Shoes (Left Side)	1
5-99	41-346-99	Brake Backup Plate Assembly With Shoes (Right Side)	1
5-100	41-346-10	Brake Backup Plate Only (Left Side)	1
5-100	41-346-11	Brake Backup Plate Only (Right Side)	1
5-101	41-640-00	Brake Shoes 7" Internal Expanding (Set For 1 Wheel)	2 Set
5-102	42-003-00	Brake Adjustment Cam (7" Hydraulic Brake)	4
5-103	85-207-00	Spring Extension 3/8" X 1-3/8" Free Length (Red)	4
5-104	85-208-00	Spring Extension 1/2" X 4 1/2" Free Length (Orange)	2
5-105	85-411-00	Spring Torsion 1 1/2" Diameter (Blue)	2
5-106	45-044-00	Gasket - Rear Axle Bearing	2
5-107	88-068-62	Washer - 1/2" Lock	4
5-108	88-060-06	Hex Head Cap Screw 1/2" X 1/2" N.C.	4
5-109	41-514-00	Brake Drum (7")	2
5-116	99-506-98	Wheel Cylinder (7" Brake - Left)	1
5-116	99-506-99	Wheel Cylinder (7" Brake - Right)	1
5-117	99-506-61	Wheel Cylinder Repair Kit (7" Brake)	2
5-118	88-527-11	Cotter Pin 1/8" X 1" (Axle Vent)	1
5-119	88-088-61	Washer 5/16" SAE	11
5-122	80-703-00	"O" Ring Motor Mount Seal	1
5-123	70-454-00	Motor Mount Plate	1
5-124	88-067-11	Socket Set Screw 1/2" NC X 1"	1
5-125	88-069-80	Nut 1/2" NC (Hex)	1
5-126	88-109-80	Nut 3/8" NC (Hex)	3
5-127	16-400-00	Spacer 1 1/2" I.D. X .125" Thick	0 - 1 Or 2
5-128	88-140-14	Hex Head Cap Screw 1/2" X 1 1/2" NC	3 Or 4
5-130	88-180-11	Hex Head Cap Screw 5/8 X 1 1/2" NC (Model E)	1
5-131	88-188-62	Lock Washer 5/8" (Model E)	1
5-132	41-695-00	Pin, Brake Shoe Anchor	4
5-133	41-697-00	Washer (Rubber) 7/16 O.D. x 1/8 I.D. x 3/32 Thick	4
5-134	88-068-61	Washer, 1/4 SAE	4
5-135	85-050-00	Spring, Compression, 1/2 O.D. x 1" Long (Fuschia)	4
5-136	41-696-00	Cup, Brake Shoe Anchor	4



TAYLOR DUNN MFG. CO.
2114 West Ball Rd.
Anaheim, Calif.

MOTOR PARTS - G.E. MOTORS

FIGURE 5M
SECTION J2M

LENGTH | QUAN. | REVISED DATE | REVISION

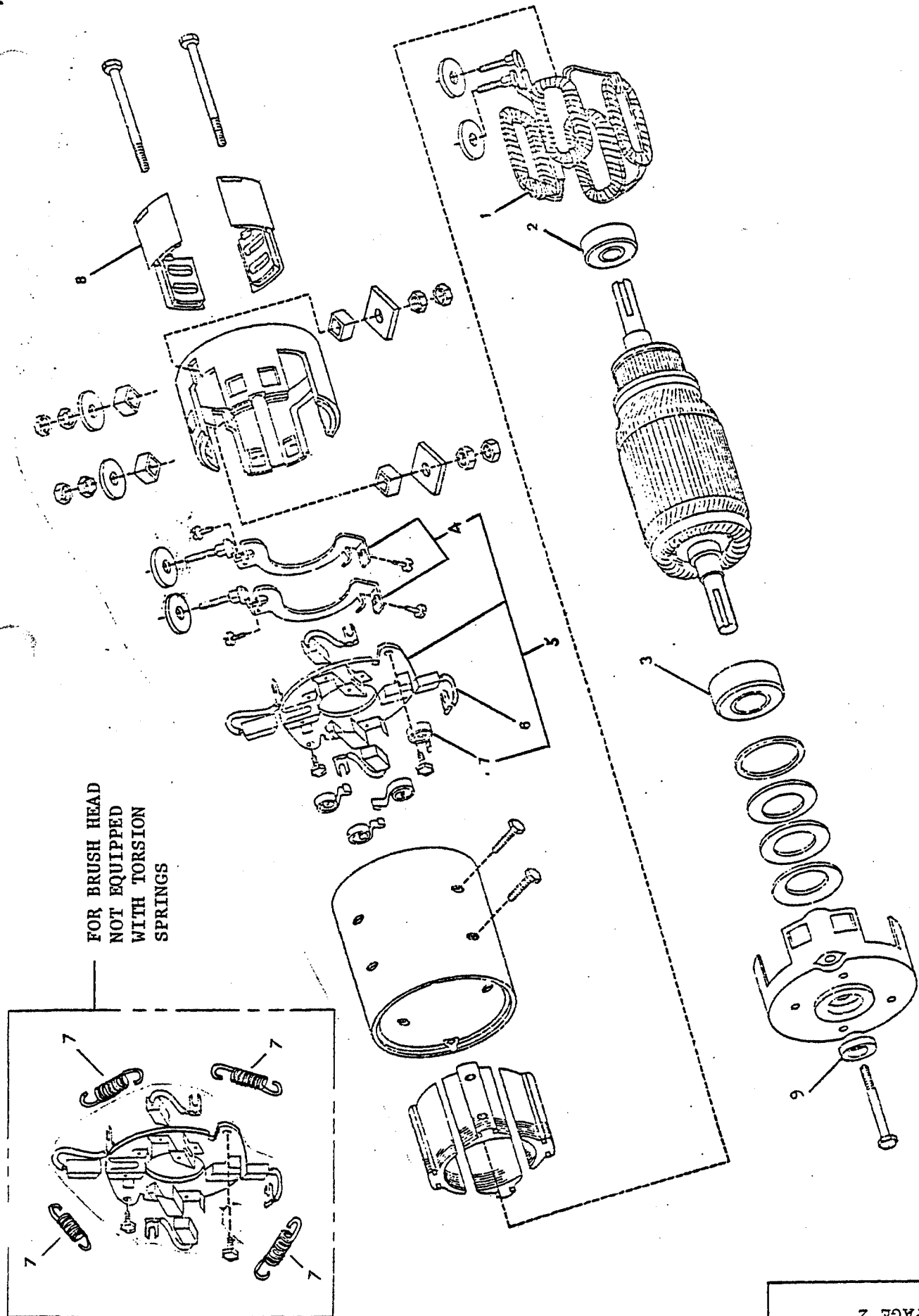
NO. | DESCRIPTION

TOL. FRAC. + DEC. -

SCALE NONE

DRAWN BY B.B.

DATE 6-29-77



ELECTRIC MOTORS
REFER TO FIGURE 5M

For D.C. Motor replacement parts, IT IS NECESSARY TO INCLUDE COMPLETE MOTOR NAME PLATE DATA WITH THE ORDER

FIG. I.D. NO.	T-D PART NO.	DESCRIPTION	QTY.
Replacement parts for G.E. Motor 5BC48JB503, 5BC48JB531, 5BC48JB550 and 5BC48JB582			
5M-1	70-201-00	Field Coil Set (not used on G.E. Motor 5BC48JB582)	1
5M-1	70-202-00	Field Coil Set (for G.E. Motor 5BC48JB582)	1
5M-2	80-200-00	Ball Bearing - Commutator End	1
5M-3	80-504-00	Ball Bearing - Shaft End	1
5M-4	70-195-00	Set of two armature terminal & brush pair connectors, <u>not used</u> on motor 5BC48JB550 with suffix letter "C". Two required per motor. (included in 70-188-00)	2
5M-4	70-196-00	Armature terminal & brush pair connector, <u>used only</u> with motor 5BC48JB550 with suffix letter "C". Two required per motor. (included in 70-184-00)	2
5M-5	70-184-00	Brush holder, without brushes, including brush springs, armature terminal & brush pair connectors. <u>Used only</u> on motor 5BC48JB550 with suffix letter "C".	1
5M-5	70-188-00	Brush holder, without brushes, including brush springs, armature terminal & brush pair connectors. <u>Not used</u> on motor 5BC48JB550 with suffix letter "C".	1
5M-6	70-101-00	Motor Brush	4
5M-7	85-412-00	Brush Spring, Torsion	4
5M-8	30-801-00	Brush Inspection Cover	4
5M-9	45-506-00	Oil Seal	1
Replacement Parts for G.E. Motors 5BC48JB251 & 5BC48JB265			
5M-2	80-200-00	Ball Bearing, Commutator End	1
5M-3	80-504-00	Ball Bearing, Shaft End	1
5M-5	70-185-00	Brush Holder Assy	1
5M-6	70-100-00	Motor Brush	4
5M-7	85-401-00	Brush Spring, Extension	4
5M-9	45-506-00	Oil Seal	1

FIG. I.D.

NO.	T-D PART NO.	DESCRIPTION	QTY.
Replacement Parts for G.E. Motor 5BC48JB67B & 5BC48JB114			
5M-2	80-205-00	Ball Bearing, Commutator End	1
5M-3	80-204-00	Ball Bearing, Shaft End	1
5M-6	70-100-00	Motor Brush Assy	4
5M-7	80-401-00	Brush Spring, Extension	4
Replacement Parts for Taylor-Dunn Motor 388P381G & Baldor 45-39W03			
5M-2	80-200-00	Ball Bearing, Commutator End	1
5M-3	80-504-00	Ball Bearing, Shaft End	1
5M-5	70-187-00	Brush Head Assy, Complete with Brushes	1
5M-6	70-101-00	Motor Brush	4
5M-8	30-803-00	Brush Inspection Cover	4
5M-9	45-506-00	Oil Seal	1
Replacement Parts for G.E. Motor 5BCG56EA17			
5M-2	80-201-00	Ball Bearing, Commutator End	1
5M-3	80-504-00	Ball Bearing, Shaft End	1
5M-5	70-189-00	Brush Holder Assy	1
5M-6	70-101-00	Motor Brush Assy	4
5M-7	85-412-00	Brush Torsion Spring	4
Replacement Parts for G.E. Motor 5BC49JB122			
5M-2	80-200-00	Ball Bearing, Commutator End	1
5M-3	80-504-00	Ball Bearing, Pulley End	1
5M-4	70-185-00	Brush Holder	1
5M-6	70-100-00	Motor Brush	4
5M-7	85-401-00	Brush Extension Spring	4
5M-9	45-506-00	Oil Seal	1
Replacement Parts for G.E. Motor 5BC49JB305			
5M-1	70-203-00	Field Coil Set	1
5M-2	80-200-00	Ball Bearing, Commutator End	1
5M-3	80-504-00	Ball Bearing, Pulley End	1
5M-4	70-195-00	Armature Terminal to Brush	2
5M-5	70-188-00	Brush Holder assembly	1
5M-6	70-101-00	Motor Brush	4
5M-7	85-412-00	Brush Extension Spring	4
5M-8	30-802-00	Brush Inspection Cover	4
5M-9	45-506-00	Oil Seal	1

FIG. I.D. NO.	T-D PART NO.	DESCRIPTION	QTY.
------------------	-----------------	-------------	------

Replacement Parts for Taylor-Dunn Motor 388P381A

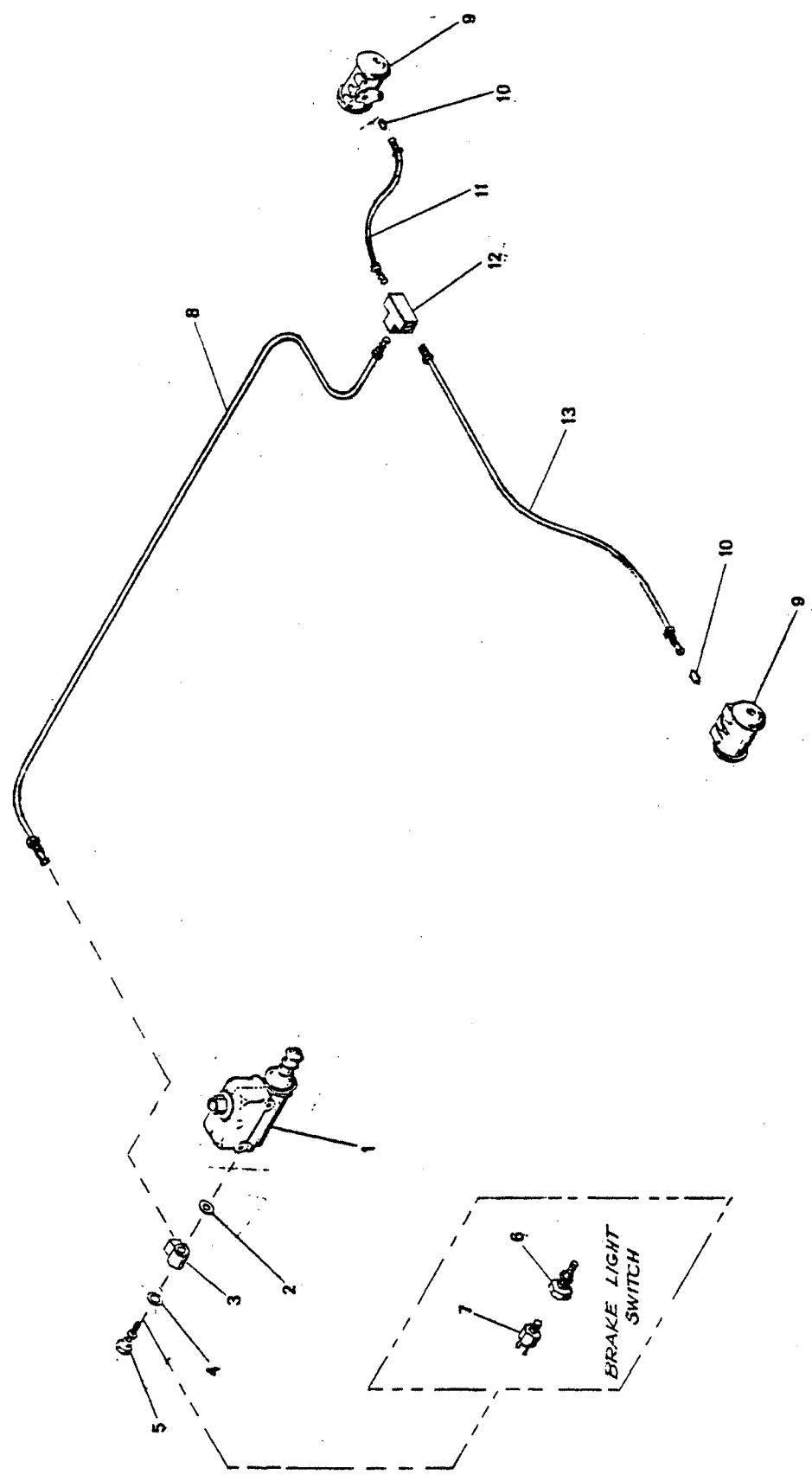
5M-2	80-204-00	Ball Bearing, Commutator End	1
5M-3	80-205-00	Ball Bearing, Shaft End	1
5M-5	*70-187-00	Brush Head Assy. Complete with Brushes *Not supplied as original equipment on <u>A</u> series motor but must be used as replacement part.	1
5M-6	*70-102-00	Motor Brush with Wire Hook *Replacement part for original <u>A</u> series motor NOT converted to new brush head assy. 70-187-00.	4
5M-6	70-101-00	Motor Brush for A series motor converted to new brush head 70-187-00.	4
5M-7	*85-413-00	Brush Torsion Spring *Replacement part for original <u>A</u> series motor Not converted to new brush head assy. 70-187-00.	4
5M-9	45-506-00	Oil Seal	1
5M-8	30-802-00	Brush Inspection Cover	1

Replacement Parts for G.E. Motor 5BT1326A96

5M-2	80-504-00	Ball Bearing, Commutator End	1
5M-3	80-206-00	Ball Bearing, Shaft End	1
5M-5	70-170-00	Brush Holder Assembly	1
5M-6	70-112-00	Dual Motor Brush, One Terminal	4
5M-7	85-398-00	Brush Spring	8

Replacement Parts for G.E. Motor 5BT1326B96

5M-2	80-504-00	Ball Bearing Commutator End	1
5M-3	80-206-00	Ball Bearing, Shaft End	1
5M-5	70-171-00	Brush Holder Assembly	1
5M-6	70-112-00	Dual Motor Brush, One Terminal	4
5M-7	85-398-00	Brush Spring	8



NO.	DESCRIPTION	LENGTH	QUAN.	REVISED DATE	REVISION
-----	-------------	--------	-------	--------------	----------

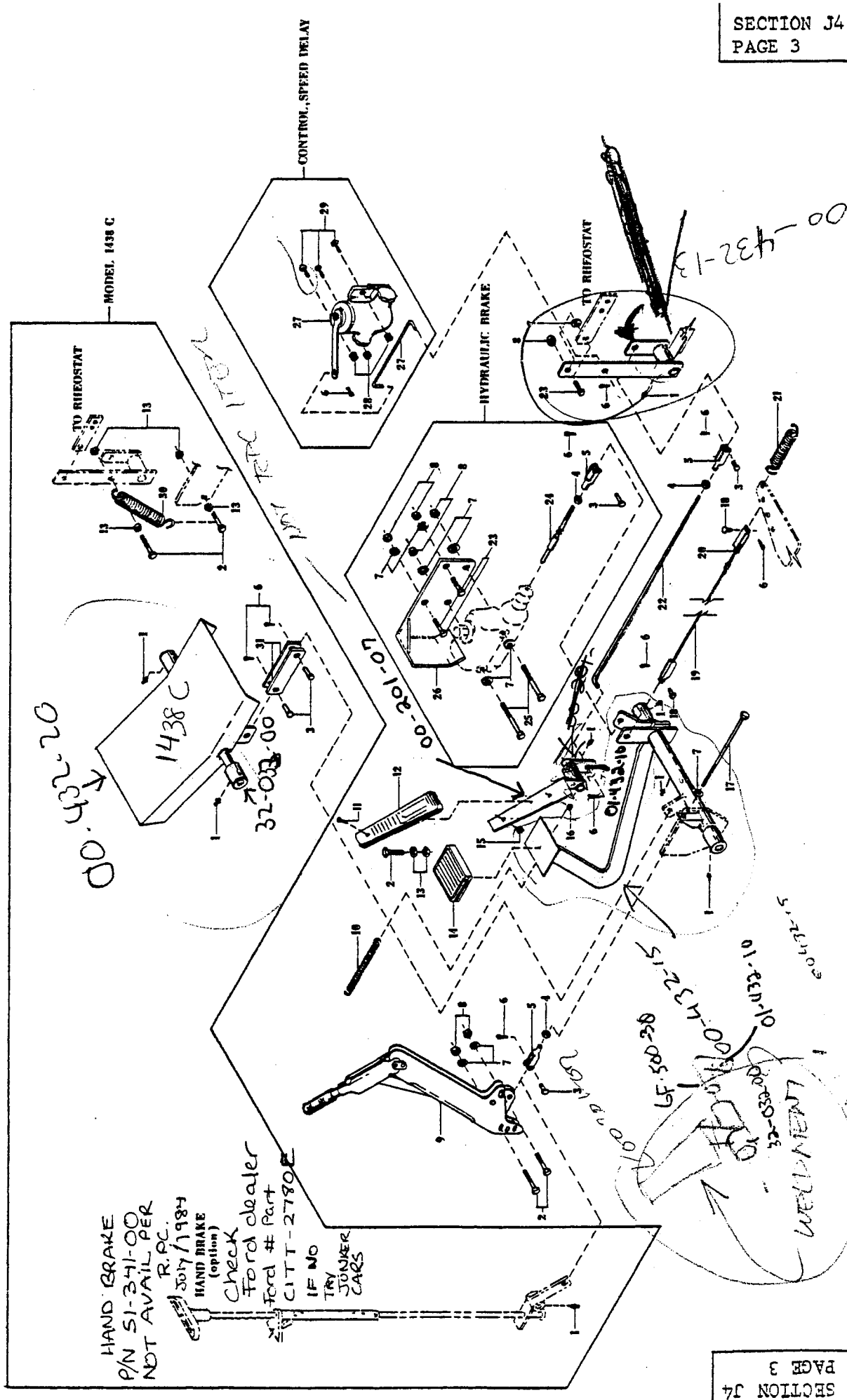
HYDRAULIC BRAKE SYSTEM

FIGURE 6
SECTION J3

TOL. FRAC.	DEC.
SCALE	NONE
DRAWN BY	KEA
DATE	1-20-70

FIGURE NO. 6
HYDRAULIC BRAKE SYSTEM

FIG. I.D. NO.	T-D PART NO.	DESCRIPTION	QTY. REQ.
6-1	99-510-00	Master Cylinder	1
6-1	99-510-51	Rubber Boot (Master Cylinder)	1
6-1	99-510-61	Kit - Master Cylinder Repair	1
6-2	99-571-00	Washer - Copper Small Hole	1
6-3	99-566-00	Fitting - 3/16 Tube Single Outlet	1
6-4	99-572-00	Washer - Copper Large Hole	1
6-5	99-579-00	Bolt - Master Cylinder Fitting	1
6-6	99-578-00	Bolt - Master Cylinder Fitting for Brake Light	1
6-7	71-110-00	Switch - Brake Light (Hydraulic)	1
6-8	99-608-54	Formed Steel Brake Line 3/16" x 60"	1
6-9	99-506-98	Wheel Cylinder (7" Brake Left)	1
6-9	99-506-99	Wheel Cylinder (7" Brake Right)	1
6-9	99-506-61	Kit - Wheel Cylinder Repair	1
6-10	99-574-00	Spacer Adaptor for Wheel Cylinder	2
6-11	99-600-51	Formed Steel Brake Line 3/16" x 6"	1
6-12	99-564-00	Tee Fitting	1
6-13	99-604-51	Formed Steel Brake Line 3/16" x 20"	1



SECTION J4
PAGE 3



TAYLOR DUNN MFG. CO
2114 West Ball Rd.
Anaheim, Calif.

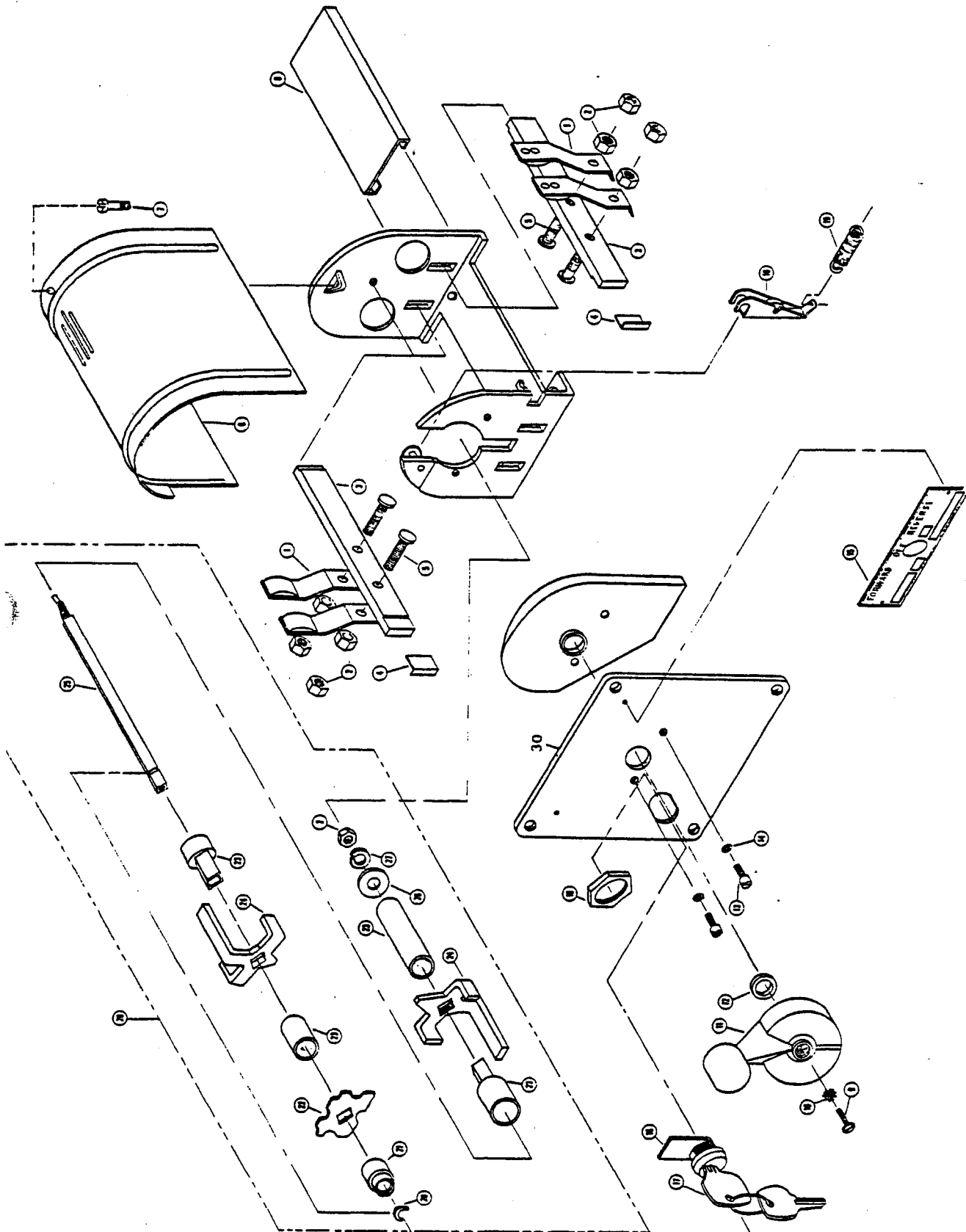
NO.		DESCRIPTION	LENGTH	QUAN.	REVISED DATE	REVISION
TOL. FRAC. ±		DEC. ±				
SCALE		NONE				
DRAWN BY		REA				
DATE		3-1-70				
FIGURE 7		SECTION J4	MECHANICAL CONTROL LINKAGE			
			MODEL C			

HAND BRAKE
P/N 51-341-00
NOT AVAILABLE PER
R.P.C.
JULY 1984
HAND BRAKE
(option)
check
Ford dealer
Ford # Part
CIT-2780
IF NO
TRY
JUNKER
CARS

SECTION J4
PAGE 3

FIGURE NO. 7
MECHANICAL CONTROL LINKAGE

FIG. I.D. NO.	T-D PART NO.	DESCRIPTION	QTY. REQ.
7-1	87-071-00	Grease Fitting 3/16" Drive Type (Straight)	5 or 7
7-2	88-100-14	Hex Head Cap Screw 3/8" x 1½ NC	2 or 3
7-3	96-772-00	Clevis Pin 3/8 x 1"	2 or 3
7-4	88-119-80	Nut 3/8" NF (Hex)	2 or 3
7-5	96-762-00	Cast Clevis 3/8	2 or 3
7-6	88-527-11	Cotter Pin 1/8" x 1"	5 or 8
7-7	88-108-60	Washer 3/8" Flat	6 to 12
7-8	88-109-81	Lock Nut 3/8 NC (Hex)	3 or 7
7-9	51-340-00	Hand Parking Brake Lever with Spacers	1
7-10	85-295-00	Spring - 9/16" O.D. x 4-7/8 Free Length	1
7-11	88-025-08	Truss Head Machine Screw 8-32 x 5/8"	1
7-12	98-254-00	Accelerator Pad	1
7-13	88-109-80	Nut 3/8 NC (Hex)	2 or 4
7-14	98-200-00	Rubber Brake Pedal Pad	1
7-15	88-029-80	Nut 8-32 (Hex)	1
7-16	88-079-80	Nut ½" N.F. (Hex)	1
7-17	88-111-34	Hex Head Cap Screw 3/8 x 9" N.F.	1
7-18	96-771-00	Clevis Pin 3/8" x 3/4"	2
7-19	96-813-00	Adjustable Cable Assembly (31½ to 28½)	1
7-20	88-099-80	Nut 5/16 NF (Hex)	2
7-21	85-270-00	Spring-Extension 1½" O.D. x 4 3/8" Free Length	1
7-21	85-233-00	Spring-Extension 11/16" O.D. x 6½" Free Length (1438C Only)	1
7-22	50-123-00	Accelerator Rod 3/8 x 22½	1
7-22	50-123-10	Accelerator Rod 3/8 x 22½ With Pipe (Model 1438C Only)	1
7-23	88-100-13	Hex Head Cap Screw 3/8 x 1½ NC	1 or 3
7-24	50-009-00	Master Cylinder Push Rod 3/8 x 5 3/8	1
7-25	88-100-20	Hex Head Cap Screw 3/8 x 3" NC	2
7-26	99-515-00	Mounting Bracket, (Master Cylinder	1
7-27	53-005-10	Dash Pot Assembly For Speed Control	1
7-28	88-069-87	Nut ½" NC (Fastite	3
7-29	88-065-09	Truss Head Machine Screw ½ x 3/4 NC	3
7-30	85-280-00	Spring-Extension 1 3/8 O.D. x 7 3/4 Free Length	1
7-31	50-428-00	Brake Link	2



TAYLOR DUNN MFG. CO.
2114 West Ball Rd.
Anaheim, Calif.



FORWARD - REVERSE SW,
PART NO. 71-040-00

FIGURE 8
SECTION J5

LENGTH | QUAN. | REVISED DATE | REVISION

NO. DESCRIPTION

TOL. FRAC. DEC.†

SCALE NONE

DRAWN BY REA

DATE 9-13-69

SECTION J5
PAGE 4

FIGURE NO. 8
GROUP 8 FORWARD AND REVERSE SWITCH

FIG. I. D. NO.	T-D PART NO.	DESCRIPTION	QTY. REQ.
8-0	71-040-00	Forward & Reverse Switch Complete (4 Fingers)	1
8-1	71-040-60	Switch Finger - Silver Plated With 1/4" Hole	4
8-2	88-079-80	Nut 1/4" NF (Hex)	9
8-3	71-040-61	Finger Board With 1/4" Holes	2
8-4	71-040-69	Finger Board Wedge	2
8-5	71-040-71	Bolt-Finger Mounting (1/4" NF X 7/8" Spec.)	4
8-6	71-040-65	Switch Cover	1
8-7	71-040-73	Cover Screw (10-32 X 1/2" Filister Head)	1
8-8	71-040-70	Rubber Insulator Strip	1
8-9	88-025-06	Screw 8-32 X 1/2" Truss Head	1
8-10	88-028-64	Washer 8-32 (External Star Lock)	1
8-11	71-040-62	Switch Handle - Metal (Red Color)	1
8-12	71-040-59	Spacer Washer	1
8-13	71-040-72	Face Stop Bolt (10-32 X 3/8 Spec.)	2
8-14	88-048-62	Lock Washer 10-32	2
8-15	94-305-00	Forward-Reverse Switchplate	1
8-16	71-040-55	Lock Assembly With 2 Keys	1
8-16	71-040-87	Tubular Lock Assembly with two keys <i>Keyed unlike</i>	1
8-17	71-040-74	Key Only (Give No. Of Lock Or Vehicle Ser. No.)	2
8-18	71-040-53	Cam	1
8-19	71-040-54	Spring - (Cam)	1
8-20	71-040-75	Snap Ring - 1/4"	1
8-21	71-040-68	Bushing	1
8-22	71-040-67	Cam Index	1
8-23	71-040-66	Plastic Spacer Set (Sold Only As Set Of 4 Pcs.)	1 Set
8-24	71-040-58	Rotor Contacts (Set Of 2-1 Right & 1 Left)	1 Set
8-25	71-040-64	Rotor Shaft (Only)	1
8-26	88-068-61	Washer SAE	1
8-27	88-068-62	Lock Washer 1/4"	1
8-28	71-040-52	Rotor Assembly	1
8-30	71-040-82	Face Plate	1
	71-040-76	Kit-Conversion to Six Finger Switch	1
<u>Switch Extension Handle Parts</u>			
8-9	71-040-80	Extension Rod-8-32 x 6 1/4" Long	1
8-9	71-040-78	Extension Tube-11/16 OD x 5 1/2" Long	1
8-11	71-040-77	Switch Position Indicator	1
	71-040-79	Bracket - Extension Support	1
	88-029-80	Nut 8-32 (Hex)	1

SPEED CONTROL RHEOSTAT

FIGURE 9
SECTION J6

TOL. FRAC.	+	DEC.	+
SCALE NONE			
DRAWN BY REA			

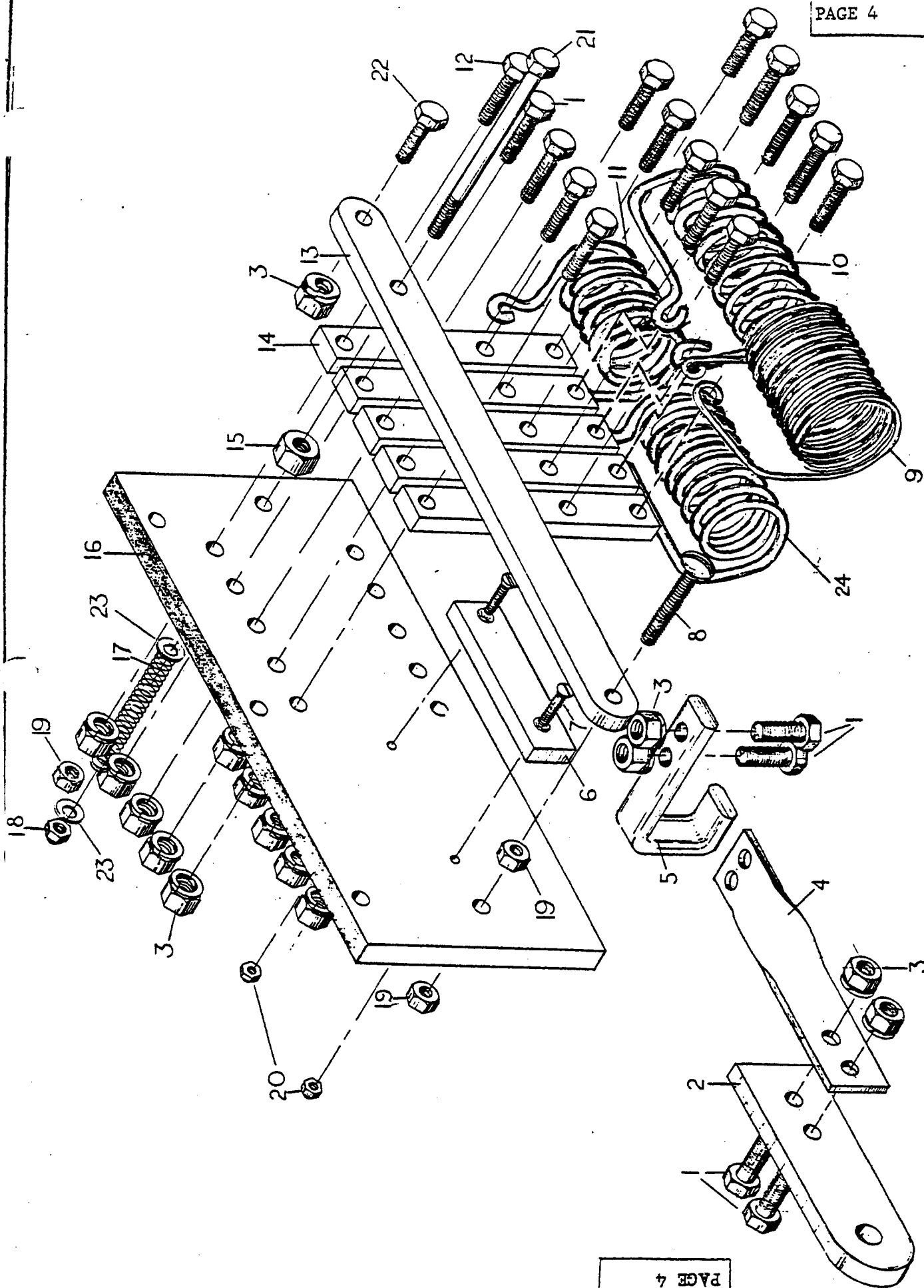


FIGURE NO.9
GROUP 9 RHEOSTAT 5 SPEED CONTROL

FIG. I.D. NO.	T-D PART NO.	DESCRIPTION	QTY. REQ.
9-0	61-832-10	Sliding Bar J-Hook Assembly	1
	61-837-15	Sliding Bar Reostat Assembly With Coils, less J-Hook Assembly	1
9-1	88-060-09	Hex Head Cap Screw 1/4" NC X 3/4"	15
9-2	61-834-00	Insulating Board	1
9-3	88-069-87	Fastite Nut 1/4" NC	20
9-4	61-833-00	J-Hook Twisted Strap (4-1/2" Long)	1
9-5	61-832-00	Sliding J-Hook Bar	1
9-6	61-835-15	Neutral Bar (5 Speed)	1
9-7	88-026-10	Flat Head Machine Screw 8-32 X 7/8"	2
9-8	88-065-14	Truss Head Machine Screw 1/4" NC X 1-1/2"	1
9-9	78-212-51	Resistor Coil (#9 Wire 10 Turns)	1
9-10	78-212-52	Resistor Coil (#6 Wire 9 Turns)	1
9-11	78-212-53	Resistor Coil (#5 Wire 6 Turns)	1
9-12	88-060-13	Hex Head Cap Screw (1/4" NC X 1-1/2") (Terminal Bolt)	1
9-13	61-836-00	Pressure Bar	1
9-14	61-831-00	Power Bar	5
9-15	88-109-80	Nut 3/8" NC (Hex)	1
9-16	61-837-00	Mounting Board	1
9-17	85-034-00	Spring - Compression 7/16" OD X 2"	1
9-18	88-069-86	Flexlock Nut 1/4" NC	1
9-19	88-069-80	Nut 1/4" NC (Hex)	3
9-20	88-029-86	Flexlock Nut 8-32	2
9-21	88-060-22	Hex Head Cap Screw 1/4" NC X 3-1/2"	1
9-22	88-060-11	Hex Head Cap Screw 1/4" NC X 1"	4
9-23	88-068-60	Washer 1/4" Flat	2
9-24	78-212-62	Resistor Coil (#8 Wire 8 Turns)	1

GENERAL ELECTRICAL PARTS

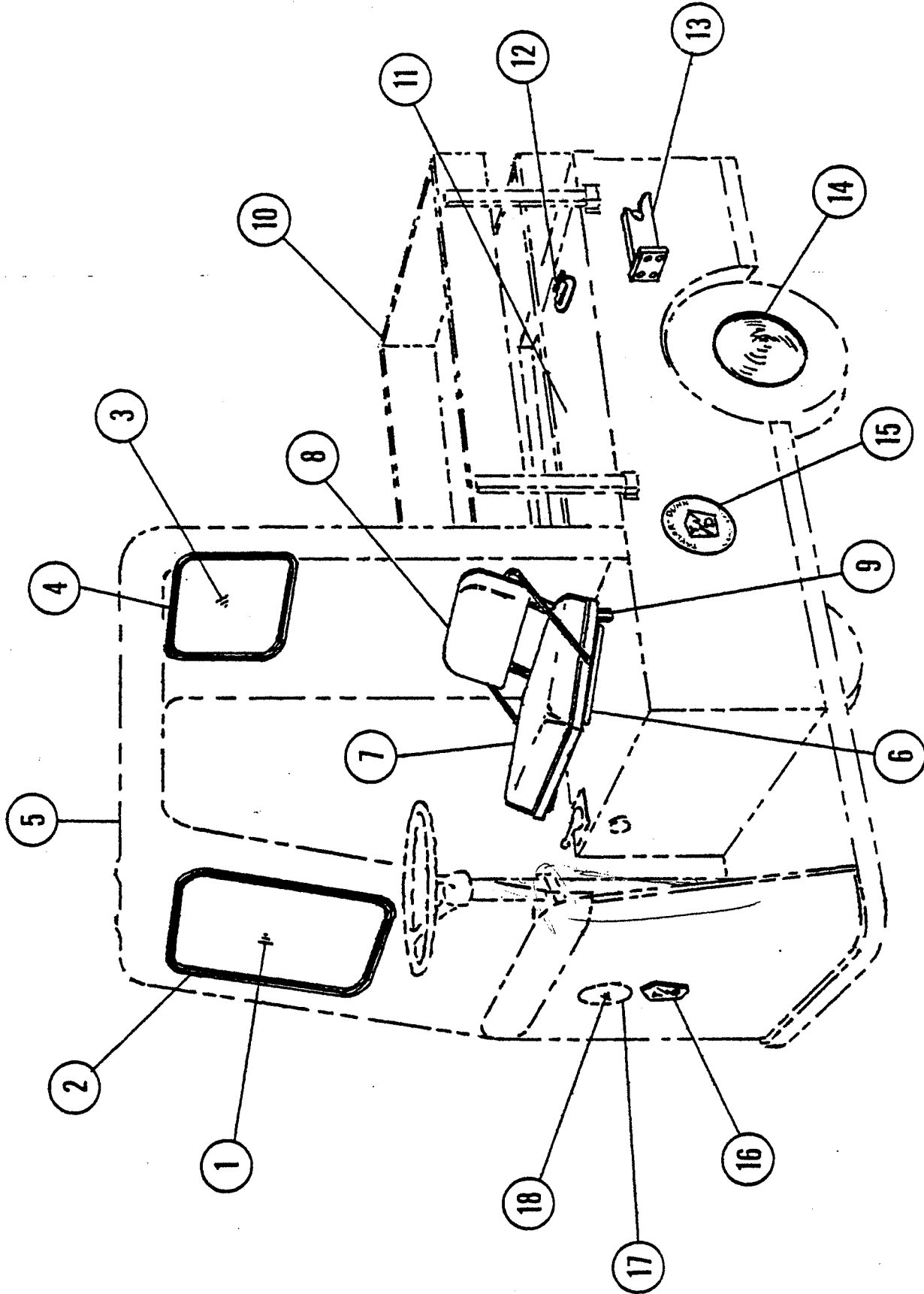
T-D PART NO.	DESCRIPTION	QTY. REQ.
71-100-00	Light Switch	1
71-110-00	Brake Light Switch (Hydraulic Operated)	1
71-111-00	Brake Light Switch (Mechanical Operated)	1
71-130-00	Micro Switch	1
71-141-00	Turn Indicator Switch, 7 Wire	1
71-501-00	Horn Button	1
71-603-00	Plate Switch Cover On-Off (Keyed Ing. Switch)	1
71-900-00	Flasher (12 Volt)	1
72-005-00	Chrome Headlight Fixture With 4" Sealed Beam Bulb	1
72-022-00	Stop & Taillight Fixture, 4" Rubber Mount (12 Volt)	2
72-051-00	Turn Light Fixture, (12 Volt) Amber, 4" Rubber Mount	2
72-072-00	4" Sealed Beam Headlight Bulb (12 Volt)	1
73-000-00	Horn (12 Volt)	1
74-000-00	Hour Meter	1
74-005-00	Charge Indicator (12 Volt)	1
74-015-00	Plug In Charge Indicator (36 Volt)	1
74-050-00	Windshield Wiper Motor	1
74-051-00	Windshield Wiper Arm	1
74-052-00	Windshield Wiper Blade	1
75-077-00	Wiring Harness For Power & Charging Receptacle	1
75-078-00	Wiring Harness for Lights & Horn	1
75-204-00	Wire #4 (Per Foot)	
75-208-00	Wire #8 (Per Foot)	
75-218-00	Wire #16 (Per Foot)	
75-231-00	Battery Jumper #6 Wire (10-1/2" Long)	4
75-404-53	Terminal Lug #4 Wire 1/2" Hole	
75-404-54	Terminal Lug #4 Wire 5/16" Hole	
75-408-52	Terminal Lug #8 Wire 3/16" Hole	
75-408-53	Terminal Lug #8 Wire 1/2" Hole	
75-418-51	Terminal Lug #16 Wire #6 Hole	
75-418-52	Terminal Lug #16 Wire 3/16" Hole	
75-418-53	Terminal Lug #16 Wire 1/2" Hole	
76-352-00	Receptacle - Flasher-Cole Hearsee #3029	1
78-010-00	Secondary Fuse & Holder (Inline Type)	1 to 3
79-823-00	Fuse - Buss Type 20 Amp	1 to 3

BATTERIES AND CHARGER

T-D PART NO.	DESCRIPTION	QTY. REQ.
SEE PARTS LIST IN CHARGER MANUALS		
75-231-00	Battery Jumper #6 Wire (8" Long)	5
76-012-00	Charging Receptacle, 30 Amp, 3 Prong	1
76-020-00	Charging Receptacle and Plug, Anderson Type SB #6313 - 175 Amp	1
77-010-00	6 Volt, 170 A.H. Battery	4 or 6
77-031-00	6 Volt, 190 A.H. Battery	4 or 6
77-042-00	6 Volt, 217 A.H. Battery	4 or 6
77-048-00	6 Volt, 250 A.H. Battery	4 or 6
77-200-00	Hydrometer	1
77-201-00	Battery Filler	1
77-202-00	Battery Breakdown Meter	1

FIGURE NO. 10
BODY & TRIM PARTS

FIG. I.D. NO.	T-D PART NO.	DESCRIPTION	QTY. REQ.
10-1	90-811-00	Windshield, Safety Glass (19½ x 21½)	1
10-2	98-312-00	Window Channel, Front (79" Long)	1
10-3	90-851-00	Rear Window, Safety Glass (12 x 18)	1
10-4	98-314-00	Window Channel, Rear (57" Long)	1
10-5	91-005-00	Fiberglass Cab - Without Window Glass (White)	1
10-5	90-908-00	Side Curtains Less Steel Frame For Cab	1 Pr.
10-5	90-913-00 90-913-00 →	Side Curtains Steel Frame Less #91-802-00 Hinges	2
10-5	91-802-00	Hinge, Side Curtain Door Frame	4
10-5	97-313-51	Shaft - 5/16 Square NC Thread for Curtain Door Latch	2
10-5	97-313-52	Plate - Door Latch (Inner & Outer)	4
10-5	97-313-53	Handle - Door Latch (Inner & Outer)	4
	92-201-00	4 x 8 Mirror	1
	92-202-00	Mirror Bracket	1
	88-065-08	Truss Head Machine Screw 1/4 x 5/8 NC	
	88-068-62	Lock Washer ½"	
	88-069-87	Nut Fastite ½" NC	
	88-069-83	Nut Acorn ½" NC	
10-6	90-100-00	Jump Seat Frame (Less Cushions)	1
10-7	90-001-00	Seat Cushion	1
10-8	90-000-00	Seat Back Rest	1
10-9	90-100-51	Support Rod - Jump Seat Frame	2
	88-837-09	Pan Head Sheet Metal Screw # 14 x 3/4	8
	88-107-09	Square Head Set Screw 3/8 x 3/4 NC	0 or 6
10-10	90-550-10	Stake Sides & End Assembly (14" High Stakes- Without Cab)	1
10-10	90-550-11	Stake Sides & End Assembly (14" High Stakes- With Cab)	1
10-10	90-540-00	Stake Side, Side Gate Hook	4
10-10	90-543-00	1 1/2 x 3/4 Channel Stakes - 17" Long	6
10-10	90-547-00	1 1/2 x 3/4 Channel Stakes - 21" Long	6
10-10	90-546-00	1 1/2 x 3/4 Channel Stakes - 27" Long	6



NO.		DESCRIPTION	LENGTH	QUAN.	REVISED DATE	REVISION
TOL. FRAC. ±		DEC. ±				
SCALE		NAME				
DRAWN BY		P/E4				
FIGURE 10			BODY & TRIM PARTS			
			TAYLOR DUNN MFG. CO. 2114 West Ball Rd. Anaheim, Calif.			

FIG. I.D. NO.	T-D PART NO.	DESCRIPTION	QTY. REQ.
10-10	90-548-00	1½ x 3/4 Channel Stakes - 39" Long	6
10-10	90-544-00	2" x 1" Stake Pockets	6
	88-065-13	Truss Head Machine Screw ½ x 1½ NC	44
	88-065-11	Truss Head Machine Screw ½ x 1" NC	24
10-11	90-420-00	Deck Board ½" Plywood (29 3/8 x 48)	1
10-12	95-510-00	Deck Handle	1
10-13	97-804-00	Hitch-Pintle Type	1
10-13	97-808-00	Hitch-Automatic Coupling	1
10-13	88-140-14	Hex Head Cap Screw ½ x 1½ NC	4
10-13	88-148-62	Lock Washer ½"	4
10-13	88-149-80	Nut ½" NC (Hex)	4
	50-227-00	½" Battery Rod - 11½ Long Plus Bend	2 or 4
	50-236-00	½" Battery Rod - 8" Long Plus Bend	3
10-14	92-000-00	Chrome Wheel Cover 8" for 400 x 8 Wheel	2
10-15	94-301-00	Taylor-Dunn Decal	2
10-16	94-201-00	Taylor-Dunn Emblem	1
10-17	72-022-51	Rubber Ring	0 to 2
10-18	30-805-00	Plate, Light Hole Cover	0 to 2
	71-650-00	3" Red Reflector	1
	94-371-00	Serial Number Plate (Please state serial No.)	1
	94-410-00	Seat Cleaner (1Quart) (Mixes 5 to 1 w/water	
	95-950-00	Paint - ½ Pt. Can (Specify Color)	
	95-951-00	Paint - 1 Pt. Can (Specify Color)	
	95-952-00	Paint - 1 Qt. Can (Specify Color)	