



A Textron Company

**CUSHMAN**

A Textron Company

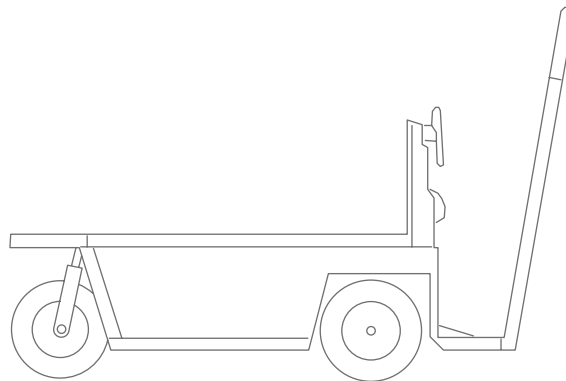
35994-G01



## Service Parts Manual

---

### E-Z-GO XI 640 CUSHMAN STOCK CHASER™



**ELECTRIC POWERED THREE WHEEL**  
**STARTING MODEL YEAR 2001**  
**REVISED 12/2002**



English

RJ 100 02 2005



# **SERVICE PARTS MANUAL**

## **ELECTRIC THREE WHEEL UTILITY VEHICLES**

### **VEHICLES**

#### **INDUSTRIAL 640**

#### **STOCK CHASER**

TEXTRON Golf, Turf & Specialty Products reserves the right to make design changes without obligation to make these changes on units previously sold and the information contained in this manual is subject to change without notice.

TEXTRON Golf, Turf & Specialty Products is not liable for errors in this manual or for incidental or consequential damages that result from the use of the material in this manual.

**CUSTOMER SERVICE DEPARTMENT IN USA PHONE: 1-800-241-5855 FAX: 1-800-448-8124**

**OUTSIDE USA PHONE: 010-1-706-798-4311, FAX: 010-1-706-771-4609**

**TEXTRON GOLF, TURF & SPECIALTY PRODUCTS, P.O.BOX 388, AUGUSTA, GEORGIA USA 30903-0388**

## **NOTES**

To obtain a copy of the limited warranty applicable to the vehicle, call or write a local Distributor, authorized Branch or the Warranty Department with vehicle serial number and manufacturer code.

The use of non Original Equipment Manufacturer (OEM) parts may void the warranty.

Overfilling of batteries may void the warranty.

### **BATTERY PROLONGED STORAGE**

All batteries will self discharge over time. The rate of self discharge varies depending on the ambient temperature and the age and condition of the batteries.

A fully charged battery will not freeze in winter temperatures unless the temperature falls below -75° F (-60° C).

As with all electric vehicles, the batteries must be checked and recharged as required or at a minimum of 30 day intervals.

# TABLE OF CONTENTS

SECTION	Page No.
HOW TO USE THE SERVICE PARTS MANUAL .....	v
ILLUSTRATED PARTS BREAKDOWN .....	vii
ACCELERATOR .....	A-1
BATTERY CHARGER - ON BOARD .....	B-1
BATTERY CHARGER - PORTABLE .....	B-7
BATTERY CHARGER - LESTER .....	B-11
BODY .....	C-1
BRAKES .....	D-1
DIRECTION SELECTOR .....	E-1
ELECTRICAL SYSTEM .....	F-1
ELECTRONIC SPEED CONTROL .....	G-1
FRONT FORK AND STEERING .....	H-1
MOTOR .....	J-1
REAR AXLE .....	K-1
WHEELS AND TIRES .....	L-1

# TABLE OF CONTENTS

Notes:

# HOW TO USE THE SERVICE PARTS MANUAL

This manual is divided into several sections:

## GENERAL INFORMATION

- TABLE OF CONTENTS
- HOW TO USE THE SERVICE PARTS MANUAL

## ILLUSTRATED PARTS BREAKDOWN

- Contains illustrations and parts lists for all systems of the vehicle

## APPENDIX

- Contains a listing of specialty products and options/accessories

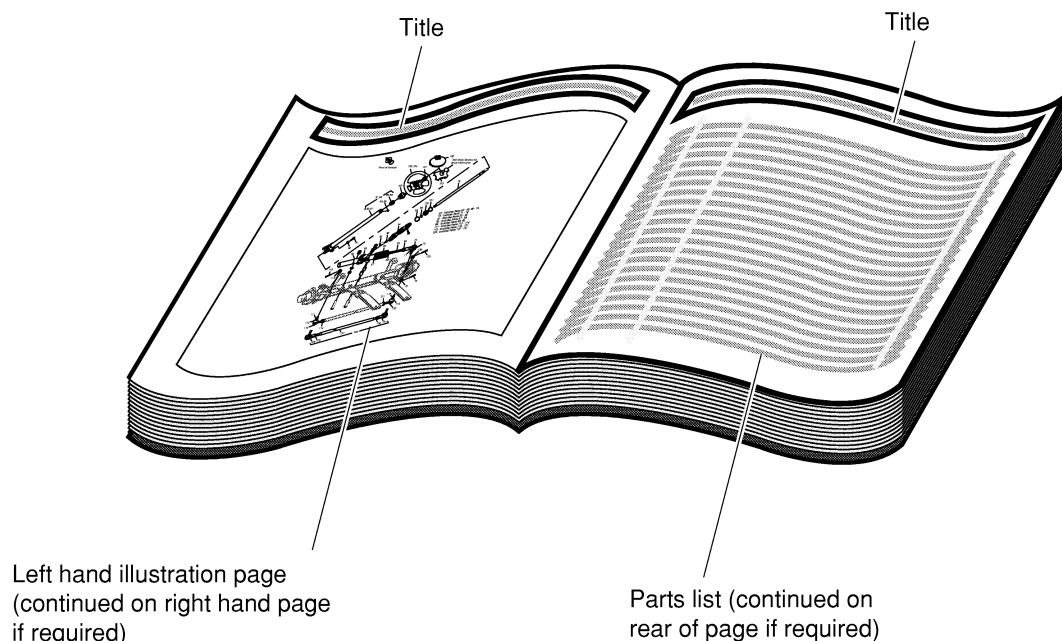
## USE OF THE MANUAL

To use this manual, consult the TABLE OF CONTENTS (page iii) or the INDEX OF MAJOR COMPONENTS (located at rear of this manual) to locate the information or illustration required.

Introduction of some revisions varies due to supply of components; therefore, it is possible that various combinations of components may be found that are not directly reflected by each illustration. Consult the illustration that best suits your situation. Locate the serial number plate (see BODY located in the Illustrated Parts Breakdown section of this manual for its location) and note the complete number shown on the plate. It is important that the serial number of your vehicle and its model number be supplied to Service Parts when ordering any replacement components.

Locate the serial number plate (see BODY located in the Illustrated Parts Breakdown section of this manual for its location) and note the complete number shown on the plate.

# HOW TO USE THE SERVICE PARTS MANUAL



## 1. WHEN THE PART NUMBER IS NOT KNOWN

- Determine the function and application of the part required. Turn to the INDEX OF MAJOR COMPONENTS and select the most appropriate component description.
- Turn to the page number indicated and locate the part description in the parts list. Read the full accompanying description for specific information regarding the part that was not shown in the index.
- From the parts list, obtain the item number assigned to it and confirm that the part selected is correct by verifying it with the pictorial representation on the illustrated page.

## 2. IF YOU KNOW THE PART NUMBER

- Use the INDEX OF MAJOR COMPONENTS to find the page(s) the part number appears on.
- Turn to the page number indicated and locate the part number in the parts list. Refer to the accompanying description for specific information regarding the part.
- From the parts list, obtain the item number assigned to it and confirm that the part selected is correct by verifying it with the pictorial representation on the illustrated page.

Should an asterisk (\*) appear in the part number column on the parts list page, read upwards until a part number is found. The part number is the lowest assembly sold by Service Parts. The asterisk (\*) indicates that the part depicted is not available for purchase.

**NOTE:** Descriptions are indented under the assembly that they are used on. That assembly is, in turn listed under the assembly that it is used on. This process is repeated until the highest final assembly is reached.

**To facilitate the maintenance and repair of the vehicle, a Technician's Repair and Service Manual is available from the Service Parts Department.**

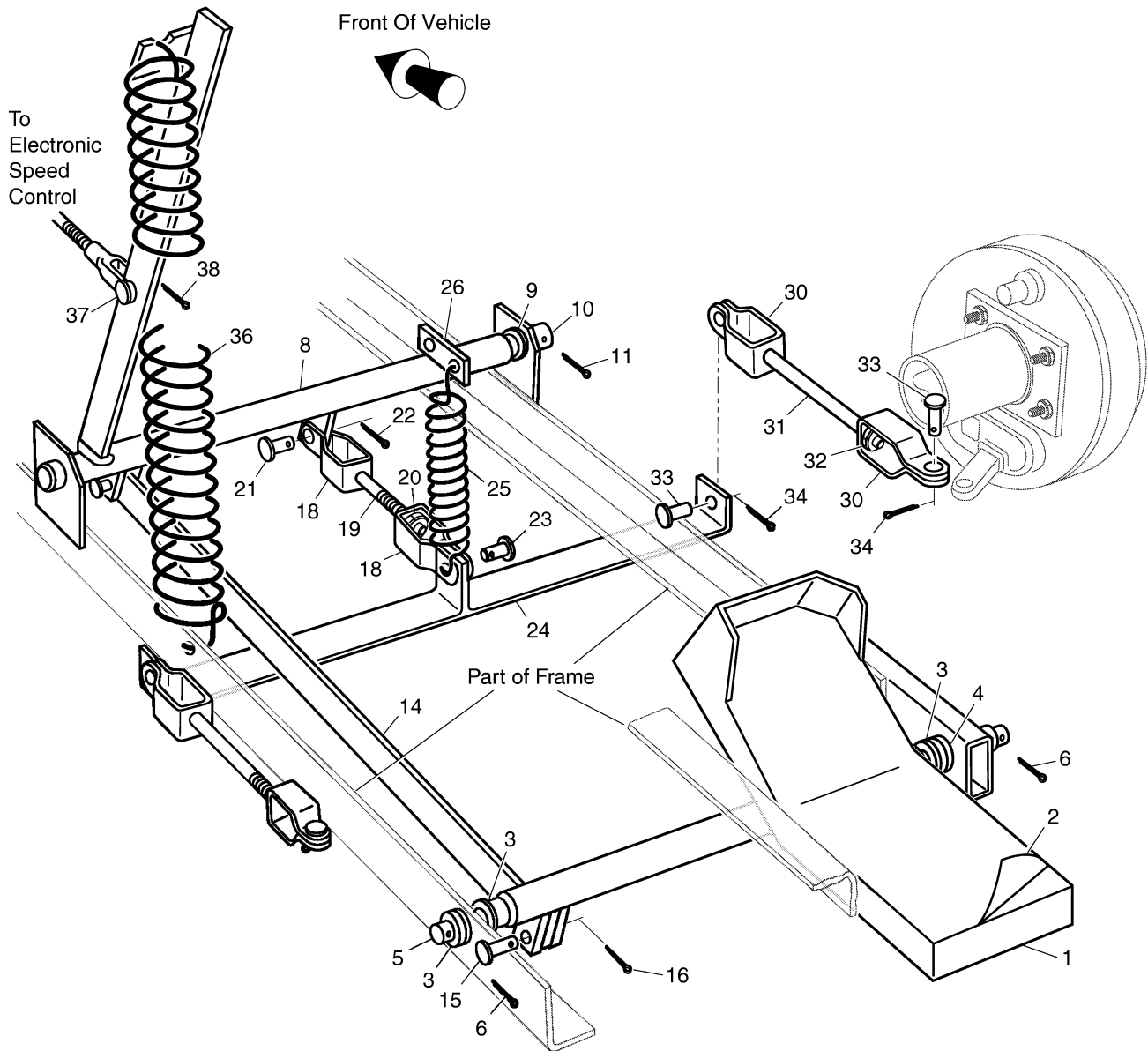
## **ILLUSTRATED PARTS BREAKDOWN**

# **ILLUSTRATED PARTS BREAKDOWN**

## **HOW TO USE THE SERVICE PARTS MANUAL**



# ACCELERATOR



When ordering parts, please specify the model and serial number of the product.

\* Indicates a component that is not available as an individual part.

G\*\* Indicates consult Customer Service Department for additional information.

ITEM	PART NO.	1 2 3 4 5	DESCRIPTION	QTY.
1	32277-G1		FOOT PEDAL.....	1
2	21531-G2		ABRASIVE STRIP .....	1
3	70581-G01		BUSHING .....	3
4	00771-G2		NYLON WASHER, 1/2" .....	2
5	30772-G4		PIVOT SHAFT, 1/2" DIA. X 17" LG .....	1
6	10387-G2		COTTER PIN, 3/32" X 1" LG .....	2
7				
8	32279-G1		CONTROL ARM .....	1
9	70581-G01		BUSHING .....	2
10	30772-G3		PIVOT SHAFT, 1/2" DIA. X 16" LG .....	1
11	10387-G9		COTTER PIN, 1/8" X 1 1/4" LG .....	1
12				
13				
14	30783-G1		CONTROL LINK .....	1
15	14443-G3		CLEVIS PIN, 5/16" X 1" LG .....	2
16	10387-G2		COTTER PIN, 3/32" X 1" LG .....	2
17				
18	30182-G1		CLEVIS YOKE.....	2
19	00272-G4		BOLT, 5/16 - 18 X 2 1/2" LG .....	1
20	01109-G01		LOCK NUT, 5/16 - 18 (STAINLESS STEEL) .....	1
21	10386-G3		CLEVIS PIN, 5/16" X 13/16" LG .....	1
22	10387-G2		COTTER PIN, 3/32" X 1" LG .....	1
23	14443-G4		CLEVIS PIN, 5/16" X 7/8" LG .....	1
24	30779-G1		BRAKE EQUALIZER .....	1
25	35428-G01		EXTENSION SPRING .....	1
26	31855-G1		SPRING LINK.....	1
27				
28				
29				
30	30182-G1		CLEVIS YOKE.....	4

## ACCELERATOR

\* Indicates a component that is not available as an individual part.

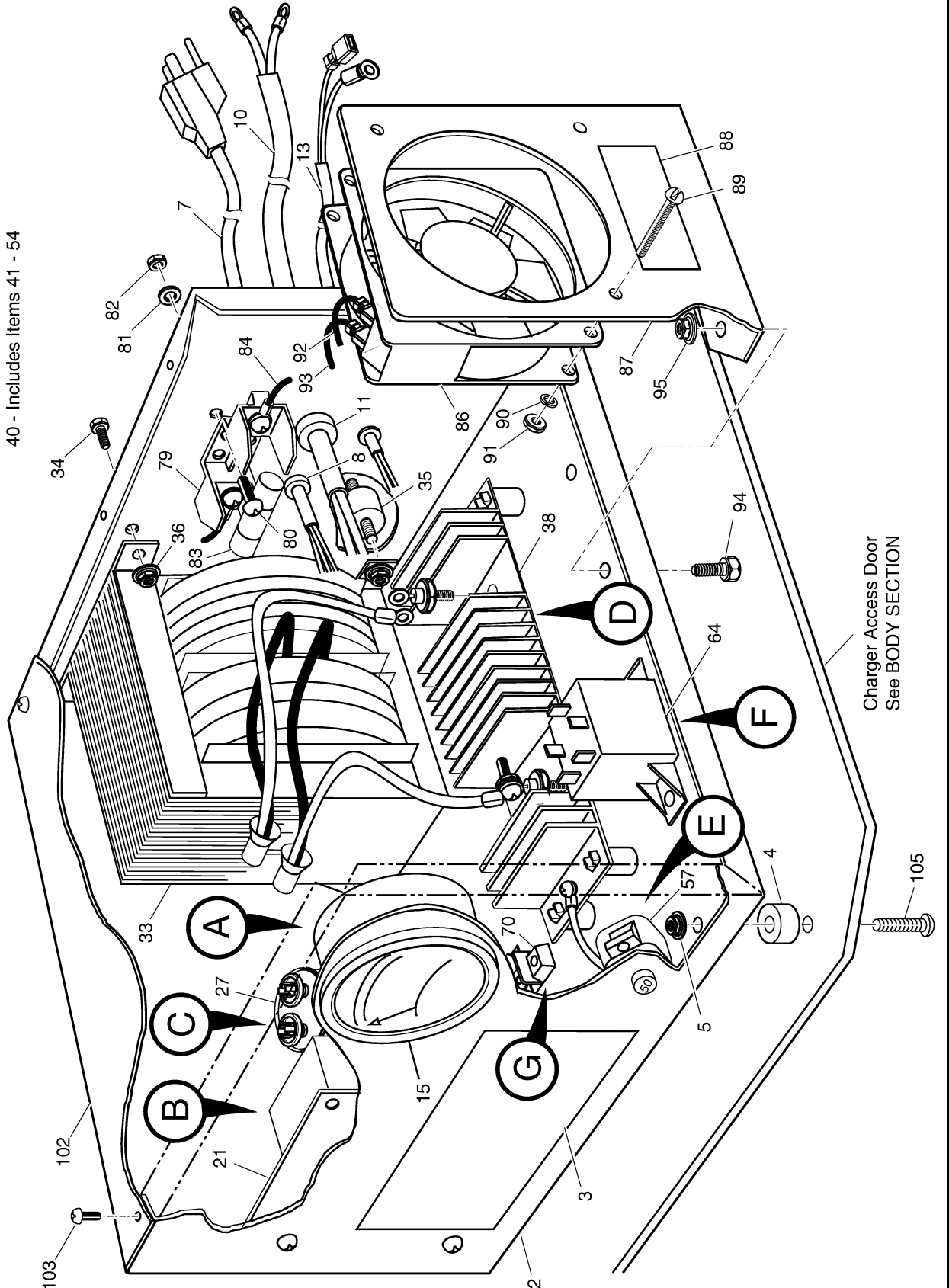
G\*\* Indicates consult Customer Service Department for additional information.

ITEM	PART NO.	1	2	3	4	5	DESCRIPTION	QTY.
31	00441-G8						BOLT, 5/16 - 18 X 4" LG .....	2
32	01109-G01						LOCK NUT, 5/16 - 18 (STAINLESS STEEL) .....	2
33	10386-G3						CLEVIS PIN, 5/16" X 13/16" LG .....	4
34	10387-G2						COTTER PIN, 3/32" X 1" LG .....	4
35								
36	30177-G1						EXTENSION SPRING .....	1
37	10386-G3						CLEVIS PIN, 5/16" X 13/16" LG .....	1
38	10387-G2						COTTER PIN, 3/32" X 1" LG .....	1

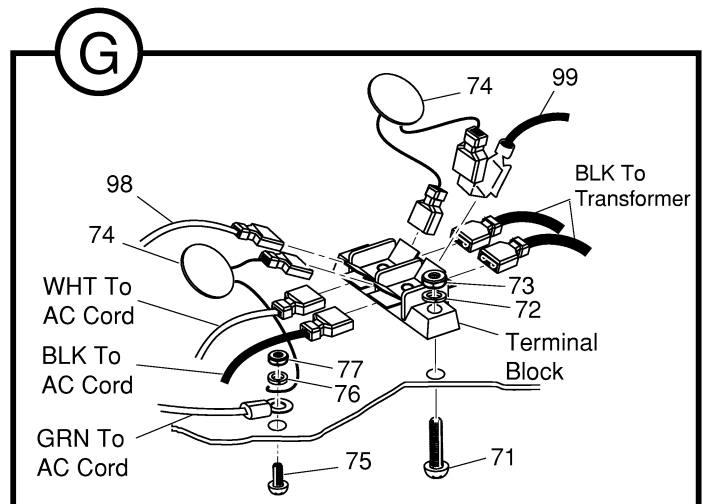
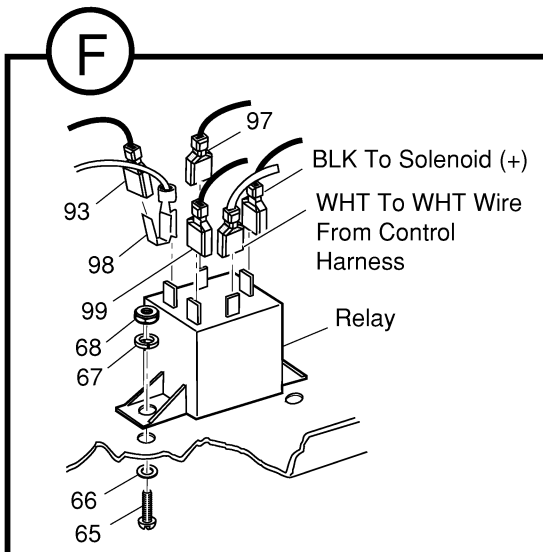
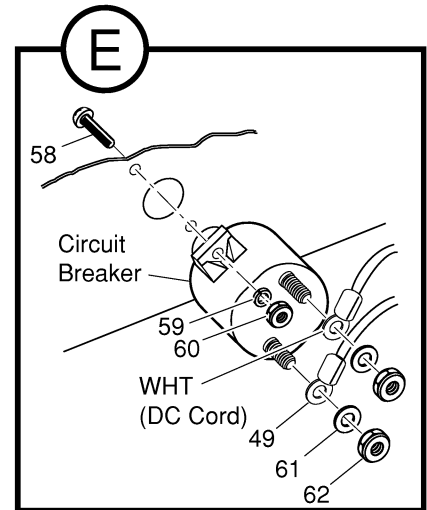
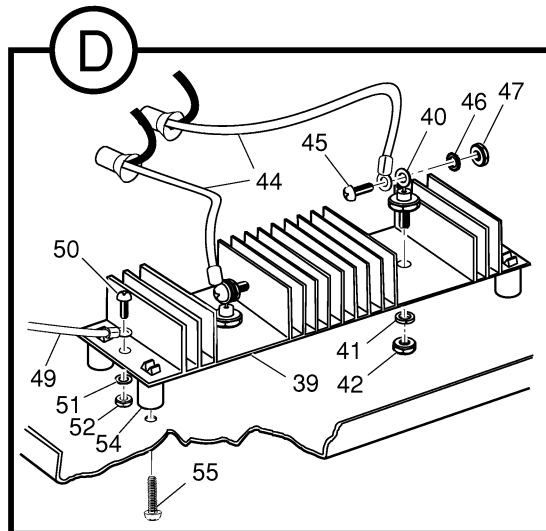
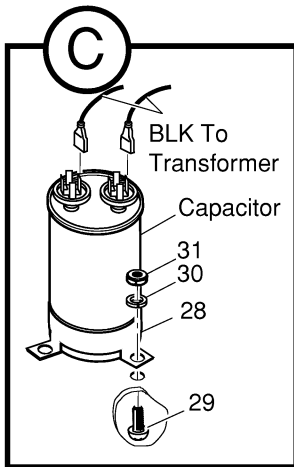
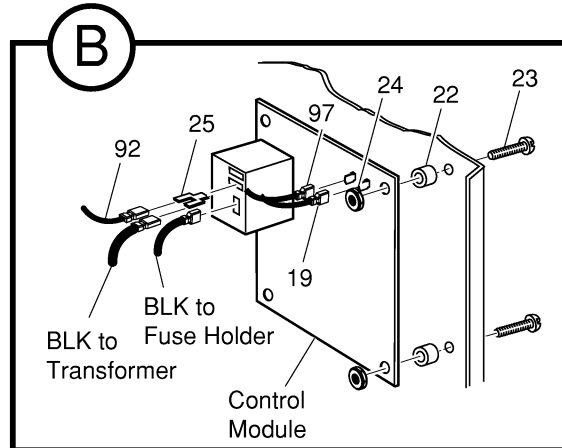
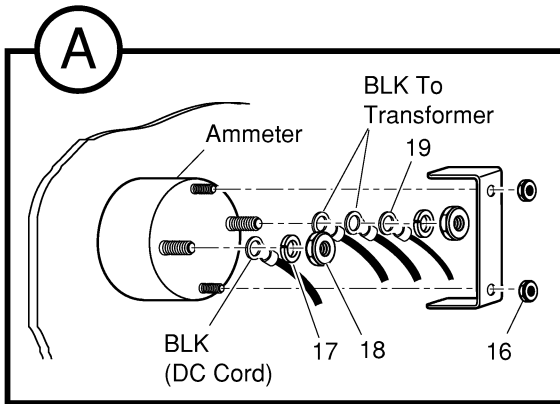


# BATTERY CHARGER - ON BOARD

- 1 - Includes Items 2 - 103
- 2 - Includes Item 3
- 38 - Includes Items 39 - 54
- 40 - Includes Items 41 - 54



# BATTERY CHARGER - ON BOARD



## BATTERY CHARGER - ON BOARD

When ordering parts, please specify the model and serial number of the product.

\* Indicates a component that is not available as an individual part.

G\*\* Indicates consult Customer Service Department for additional information.

ITEM	PART NO.	1 2 3 4 5	DESCRIPTION	QTY.
1	27009-G01		BATTERY CHARGER ASSEMBLY, TOTAL CHARGE® III, ON BOARD 24V, 10 FT. DC CORD (INCLUDES ITEMS 2 - 103) .....	1
2	27004-G01		CHASSIS (INCLUDES ITEM 3) .....	1
3	*		LABEL .....	1
4	32478-G1		ISOLATION MOUNT .....	4
5	11027-G2		LOCK NUT, 1/4 - 20 .....	2
6				
7	33847-G01		AC CORD .....	1
8	13557-G2		STRAIN RELIEF (AC) .....	1
9				
10	32599-G1		DC CORD ASSEMBLY .....	1
11	13557-G3		STRAIN RELIEF (DC) .....	1
12				
13	32510-G4		CIRCUIT INTERRUPT HARNESS .....	1
14				
15	24243-G1		AMMETER .....	1
16	*		NUT, #6 - 32 .....	2
17	*		LOCK WASHER, #10 .....	2
18	*		NUT, #10 - 32 .....	2
19	25977-G09		18 GA WIRE (BLACK 9") .....	1
20				
21	28567-G03		ELECTRONIC CONTROL MODULE .....	1
22	19081-G1		STANDOFF .....	4
23	00138-G5		SCREW, #6 - 32 X 5/8" LG .....	4
24	00735-G1		NUT, #6 - 32 .....	4
25	17902-G1		TAB ADAPTER .....	1
26				
27	28109-G01		CAPACITOR .....	1
28	26979-G01		CAPACITOR BRACKET .....	1
29	00372-G4		SCREW, #8 - 32 X 1/2" LG .....	2

## BATTERY CHARGER - ON BOARD

When ordering parts, please specify the model and serial number of the product.

\* Indicates a component that is not available as an individual part.

G\*\* Indicates consult Customer Service Department for additional information.

ITEM	PART NO.	1 2 3 4 5	DESCRIPTION	QTY.
30	00565-G4		LOCK WASHER, #8 .....	2
31	00526-G1		NUT, #8 - 32 .....	2
32				
33	32491-G1		TRANSFORMER .....	1
34	00414-G5		BOLT, 1/4 - 20 X 5/8" LG .....	2
35	22009-G1		ISOLATION MOUNT .....	2
36	11027-G2		LOCK NUT, 1/4 - 20 .....	2
37				
38	32508-G1		HEAT SINK ASSEMBLY (INCLUDES ITEMS 39 - 54) .....	1
39	32494-G1		HEAT SINK .....	1
40	18488-G1		DIODE ASSEMBLY (INCLUDES ITEMS 41 - 54) .....	2
41	*		LOCK WASHER, 1/4" .....	2
42	*		NUT, 1/4 - 28 .....	2
43				
44	18769-G2		12 GA WIRE (WHITE 9 1/2") .....	2
45	00138-G3		SCREW, #6 - 32 X 3/8" LG .....	2
46	00567-G3		LOCK WASHER, #6 .....	2
47	00525-G5		NUT, #6 - 32 .....	2
48				
49	32509-G1		12 GA WIRE (WHITE 4") .....	1
50	00378-G4		SCREW, #10 - 24 X 1/2" LG .....	1
51	00565-G5		LOCK WASHER, #10 .....	1
52	00526-G3		NUT, #10 - 24 .....	1
53				
54	11572-G2		EXPANSION NUT .....	4
55	00512-G7		SCREW, #8 - 18 X 7/8" LG .....	4
56				
57	19362-G1		CIRCUIT BREAKER .....	1
58	00372-G6		SCREW, #8 - 32 X 3/4" LG .....	2
59	00565-G4		LOCK WASHER, #8 .....	2

## BATTERY CHARGER - ON BOARD

When ordering parts, please specify the model and serial number of the product.

\* Indicates a component that is not available as an individual part.

G\*\* Indicates consult Customer Service Department for additional information.

ITEM	PART NO.	1 2 3 4 5	DESCRIPTION	QTY.
60	00526-G1		NUT, #8 - 32.....	2
61	*		WASHER, #10 .....	4
62	*		NUT, #10 - 32.....	2
63				
64	21971-G4		RELAY .....	1
65	00138-G4		SCREW, #6 - 32 X 1/2" LG .....	2
66	00559-G3		WASHER, #6 .....	2
67	00565-G3		LOCK WASHER, #6 .....	2
68	00525-G5		NUT, #6 - 32.....	2
69				
70	26962-G01		TERMINAL BLOCK.....	1
71	00987-G06		SCREW, #6 - 32 X 3/4" LG .....	2
72	00565-G3		LOCK WASHER, #6 .....	2
73	00525-G5		NUT, #6 - 32.....	2
74	26320-G01		VARISTOR, MOV .....	2
75	00372-G3		SCREW, #8 - 32 X 3/8" LG .....	1
76	00565-G4		LOCK WASHER, #8 .....	1
77	00526-G1		NUT, #8 - 32.....	1
78				
79	19363-G1		FUSE BLOCK .....	1
80	00372-G5		SCREW, #8 - 32 X 5/8" LG .....	2
81	00565-G4		LOCK WASHER, #8 .....	2
82	00526-G1		NUT, #8 - 32.....	2
83	19361-G2		10 AMP FUSE.....	1
84	32519-G1		16 GA WIRE (BLACK, 11 1/2") .....	2
85				
86	32498-G1		FAN .....	1
87	32497-G1		FAN BRACKET .....	1
88	22700-G1		LABEL, FUSE IDENTIFICATION.....	1
89	00645-G2		SCREW, #6 - 32 X 1 1/4" LG .....	3

# BATTERY CHARGER - ON BOARD

When ordering parts, please specify the model and serial number of the product.

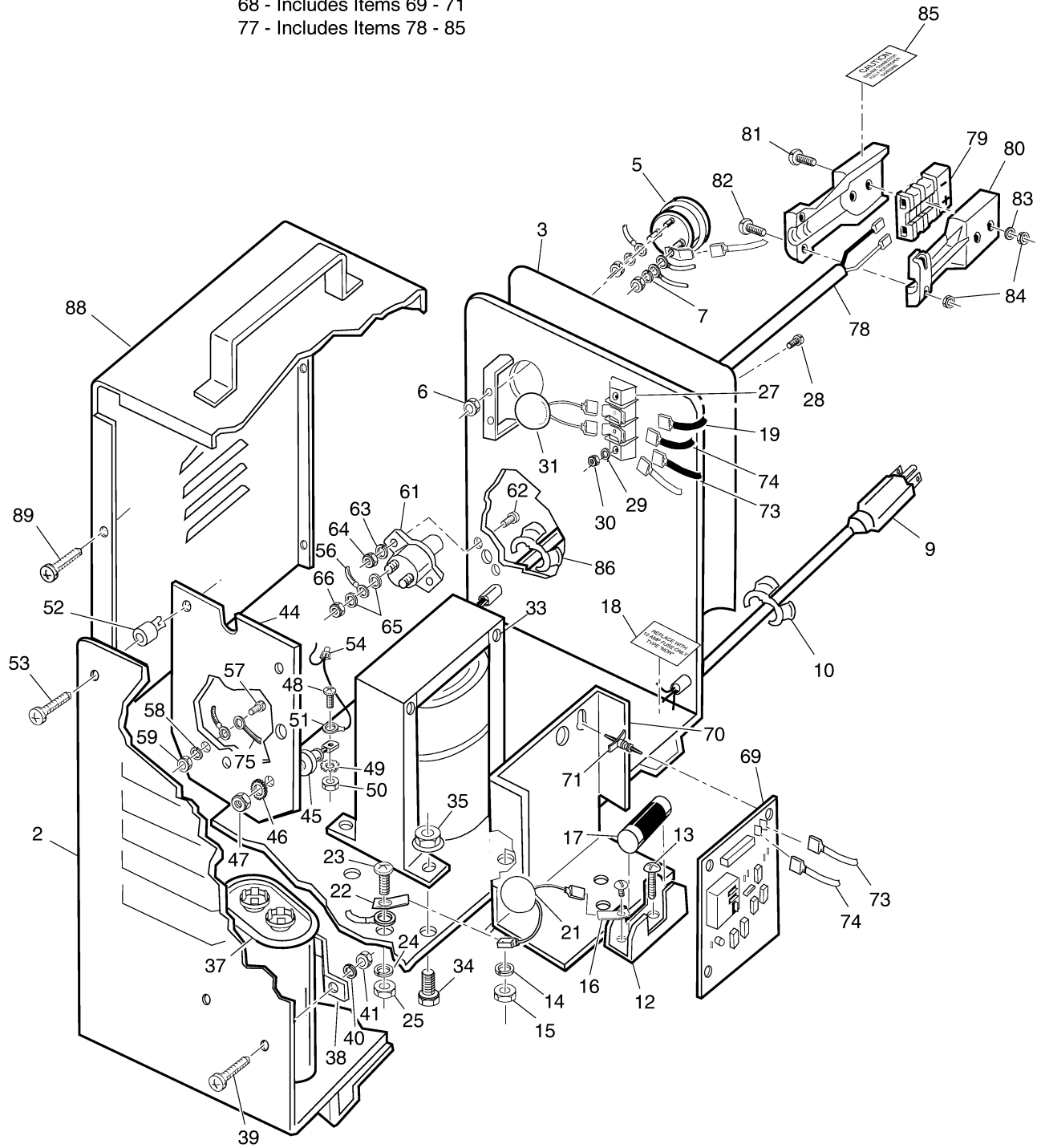
\* Indicates a component that is not available as an individual part.

G\*\* Indicates consult Customer Service Department for additional information.

ITEM	PART NO.	1 2 3 4 5	DESCRIPTION	QTY.
90	00565-G3		LOCK WASHER, #6 .....	3
91	00525-G5		NUT, #6 - 32 .....	3
92	32518-G1		18 GA WIRE (BLACK 13 1/2") .....	1
93	32516-G1		18 GA WIRE (YELLOW 13") .....	1
94	00414-G5		BOLT, 1/4 - 20 X 5/8" LG .....	2
95	11027-G2		LOCK NUT, 1/4 - 20 .....	2
96				
97	32515-G1		18 GA WIRE (RED 9") .....	1
98	32514-G1		18 GA WIRE (WHITE 9") .....	1
99	32094-G2		18 GA WIRE (BLACK 9") .....	1
100	17618-G1		WIRE TIE .....	2
101				
102	32496-G1		COVER .....	1
103	00614-G4		SCREW, #8 - 18 X 1/2" LG .....	20
104				
105	16705-G10		SCREW, 1/4 - 20 X 7/8" LG (STAINLESS STEEL) .....	4

# BATTERY CHARGER - PORTABLE

- 1 - Includes Items 2 - 89  
 43 - Includes Items 44 - 52  
 68 - Includes Items 69 - 71  
 77 - Includes Items 78 - 85



# BATTERY CHARGER - PORTABLE

When ordering parts, please specify the model and serial number of the product.

\* Indicates a component that is not available as an individual part.

G\*\* Indicates consult Customer Service Department for additional information.

ITEM	PART NO.	1 2 3 4 5	DESCRIPTION	QTY.
1	27008-G**		BATTERY CHARGER, TOTAL CHARGE III®, 24V, PORTABLE (INCLUDES ITEMS 2 - 89).....	1
2	24919-G1		CHASSIS .....	1
3	26317-G01		OPERATING INSTRUCTIONS LABEL .....	1
4				
5	24243-G1		AMMETER .....	1
6	*		NUT, #6 - 32.....	2
7	00565-G5		LOCK WASHER, #10 .....	2
8				
9	19388-G1		AC CORD .....	1
10	13557-G2		STRAIN RELIEF .....	1
11				
12	19363-G1		FUSE BLOCK .....	1
13	00372-G5		SCREW, #8 - 32 X 5/8" LG .....	2
14	00565-G4		LOCK WASHER, #8 .....	2
15	00526-G1		NUT, #8 - 32.....	2
16	12914-G1		TAB ADAPTER .....	1
17	19361-G2		10 AMP FUSE.....	1
18	22700-G1		FUSE IDENTIFICATION LABEL.....	1
19	19402-G1		16 GA WIRE (BLACK 10") .....	1
20				
21	26320-G01		VARISTOR, MOV.....	1
22	12914-G1		TAB ADAPTER .....	1
23	00372-G3		SCREW, #8 - 32 X 3/8" LG .....	1
24	00565-G4		LOCK WASHER, #8 .....	1
25	00526-G1		NUT, #8 - 32.....	1
26				
27	26962-G01		TERMINAL BLOCK.....	1
28	00987-G06		SCREW, #6 - 32 X 3/4" LG .....	2
29	00565-G3		LOCK WASHER, #6 .....	2

## BATTERY CHARGER - PORTABLE

When ordering parts, please specify the model and serial number of the product.

\* Indicates a component that is not available as an individual part.

G\*\* Indicates consult Customer Service Department for additional information.

ITEM	PART NO.	1 2 3 4 5	DESCRIPTION	QTY.
30	00525-G5		NUT, #6 - 32.....	2
31	26320-G01		VARISTOR, MOV.....	1
32				
33	32491-G1		TRANSFORMER .....	1
34	00414-G5		BOLT, 1/4 - 20 X 5/8" LG.....	4
35	11027-G2		LOCK NUT, 1/4 - 20.....	4
36				
37	17077-G1		CAPACITOR .....	1
38	*		BRACKET .....	1
39	00372-G4		SCREW, #8 - 32 X 1/2" LG.....	2
40	00565-G4		LOCK WASHER, #8 .....	2
41	00526-G1		NUT, #8 - 32.....	2
42				
43	18768-G1		HEAT SINK ASSEMBLY (INCLUDES ITEMS 44 - 52) .....	1
44	18489-G1		HEAT SINK.....	1
45	18488-G1		DIODE .....	2
46	00664-G7		LOCK WASHER, 1/4" (STAINLESS STEEL) .....	2
47	00532-G2		NUT, 1/4 - 28 .....	2
48	00138-G3		SCREW, #6 - 32 X 3/8" LG.....	2
49	00567-G3		LOCK WASHER, #6 .....	2
50	00525-G5		NUT, #6 - 32 .....	2
51	18769-G2		12 GA WIRE (WHITE 6").....	2
52	11572-G2		EXPANSION NUT .....	3
53	00512-G7		SCREW, #8 - 18 X 7/8" LG .....	3
54	19360-G1		WIRE NUT, 2 WIRE .....	2
55				
56	19441-G1		12 GA WIRE (WHITE 8") .....	1
57	00378-G4		SCREW, #10 - 24 X 1/2" LG .....	1
58	00565-G5		LOCK WASHER, #10 .....	1
59	00526-G3		NUT, #10 - 24.....	1

# BATTERY CHARGER - PORTABLE

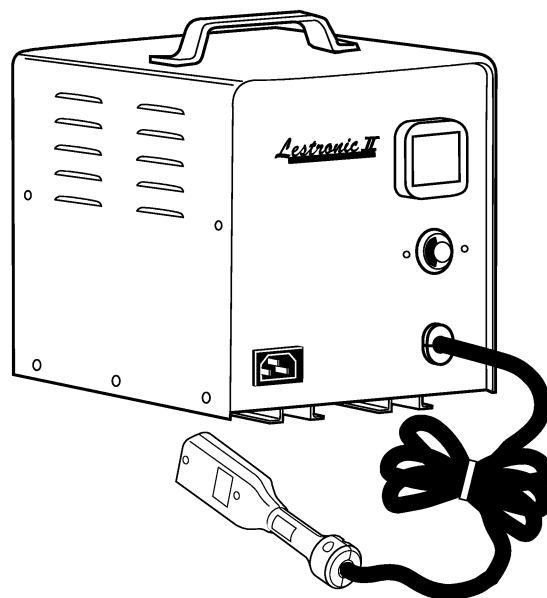
When ordering parts, please specify the model and serial number of the product.

\* Indicates a component that is not available as an individual part.

G\*\* Indicates consult Customer Service Department for additional information.

ITEM	PART NO.	1 2 3 4 5	DESCRIPTION	QTY.
60				
61	19362-G1		CIRCUIT BREAKER .....	1
62	00372-G6		SCREW, #8 - 32 X 3/4" LG .....	2
63	00565-G4		LOCK WASHER, #8 .....	2
64	00526-G1		NUT, #8 - 32 .....	2
65	*		WASHER, #10 .....	4
66	00526-G4		NUT, #10 - 32 .....	4
67				
68	26342-G03		ELECTRONIC MODULE ASSEMBLY (INCLUDES ITEMS 69 - 71) .....	1
69	28567-G02		ELECTRONIC MODULE .....	1
70	19459-G1		BRACKET .....	1
71	27877-G01		SPACER SUPPORT .....	4
72				
73	25977-G07		16 GA WIRE (YELLOW 7") .....	1
74	19954-G1		18 GA WIRE (BLACK 10") .....	1
75	19952-G1		18 GA WIRE (RED 11") .....	1
76				
77	31887-G**		DC CORD ASSEMBLY (INCLUDES ITEMS 78 - 85) .....	1
78	14489-G**		DC CORD .....	1
79	18782-G2		CONNECTOR .....	1
80	18700-G1		HANDLE .....	1
81	00647-G8		SCREW, #6 - 32 X 7/8" LG (STAINLESS STEEL) .....	2
82	00647-G3		SCREW, #6 - 32 X 3/8" LG (STAINLESS STEEL) .....	2
83	00650-G2		WASHER, #5 .....	2
84	13521-G5		LOCK NUT, #6 - 32 .....	4
85	20628-G1		LABEL (CAUTION) .....	1
86	13557-G3		STRAIN RELIEF .....	1
87				
88	19096-G1		CHARGER COVER .....	1
89	00614-G4		SCREW, #8 - 18 X 1/2" LG .....	1

## BATTERY CHARGER - LESTER



## BATTERY CHARGER - LESTER

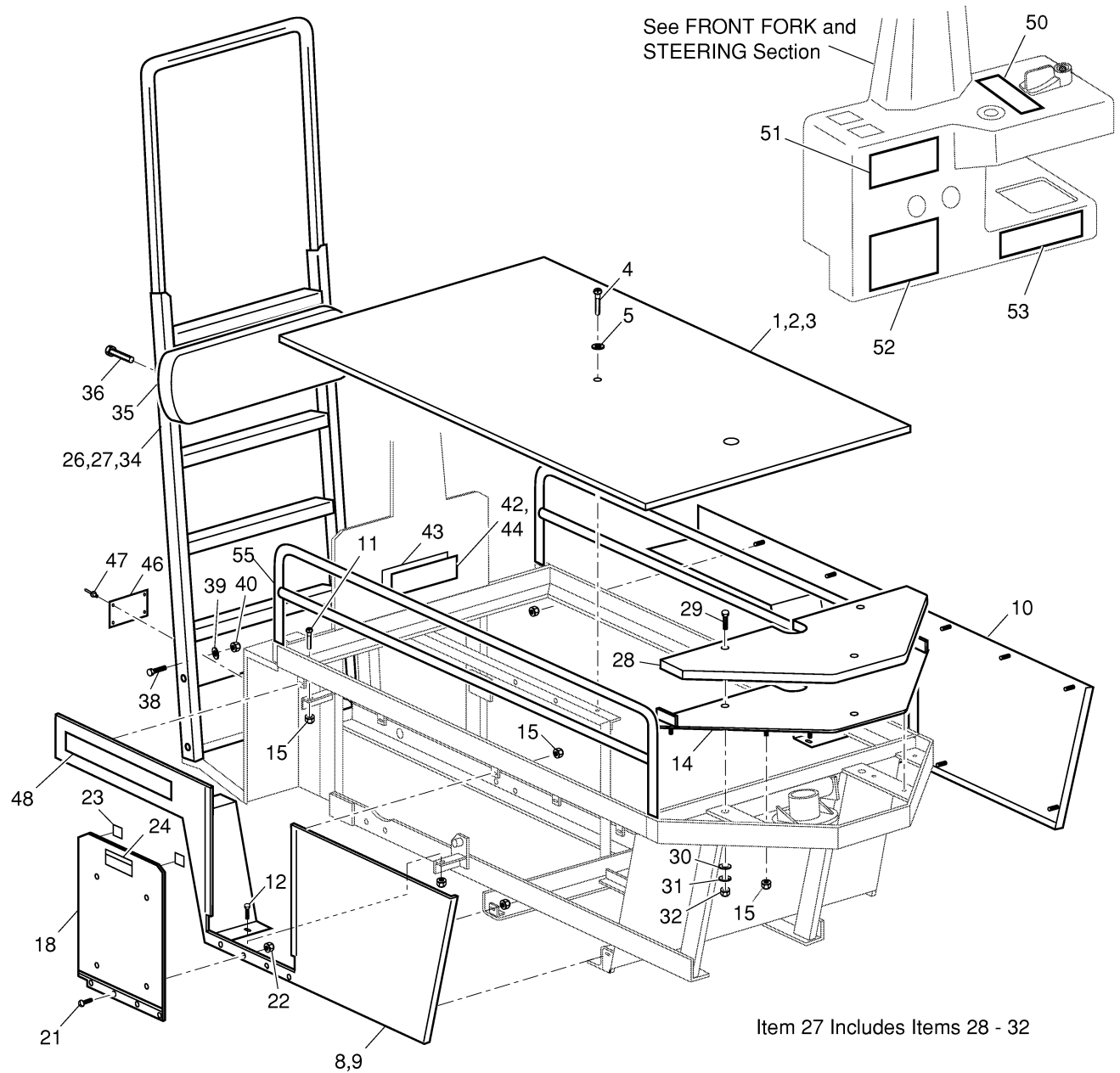
When ordering parts, please specify the model and serial number of the product.

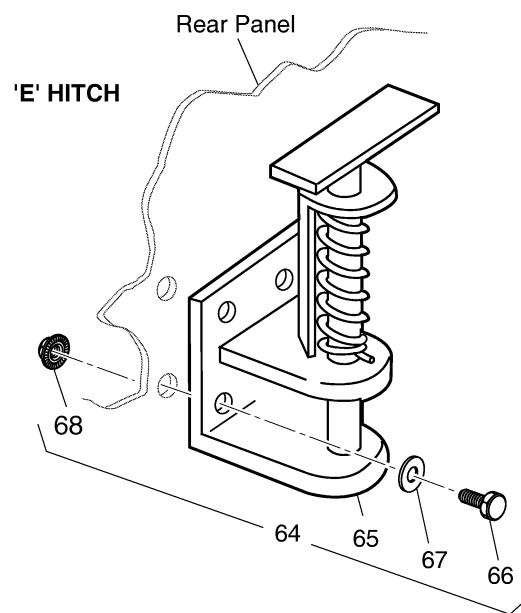
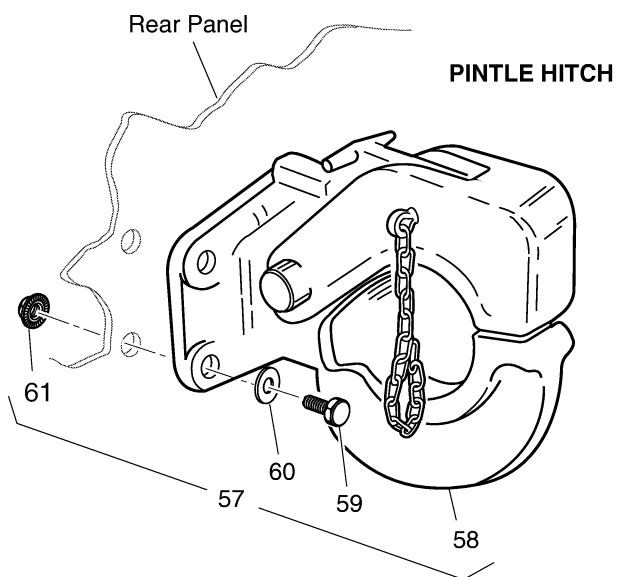
\* Indicates a component that is not available as an individual part.

G\*\* Indicates consult Customer Service Department for additional information.

ITEM	PART NO.	1 2 3 4 5	DESCRIPTION	QTY.
1	28517-G01		<p>BATTERY CHARGER, LESTER, 24 VOLT, PORTABLE WITH ANDERSON CONNECTOR, CE APPROVED (OPTIONAL)</p> <p>For service or replacement parts, contact:  Lester Electrical  625 West "A" Street  Lincoln, NE 68522</p> <p>Phone: USA 010-402- 477-8988, FAX: 010-402- 474-1769</p> <p>Always provide the following information when requesting information or ordering replacement parts:</p> <p>Model Number:  Serial Number: (stamped into housing)</p>	

# BODY





# BODY

When ordering parts, please specify the model and serial number of the product.

\* Indicates a component that is not available as an individual part.

G\*\* Indicates consult Customer Service Department for additional information.

ITEM	PART NO.	1 2 3 4 5	DESCRIPTION	QTY.
1	35700-G01		LOAD DECK.....	1
2	31050-G1		GALVANIZED STEEL LOAD DECK .....	1
3	31050-G2		STAINLESS STEEL LOAD DECK.....	1
4	00753-G3		SCREW, 1/4 - 20 X 1 1/2" LG (STAINLESS STEEL) .....	1
5	00559-G8		WASHER, 5/16" .....	1
6				
7				
8	33738-G01		BODY PANEL, RH SIDE (IF EQUIPPED WITH ONBOARD CHARGER).....	1
9	33738-G02		BODY PANEL, RH SIDE (IF EQUIPPED WITH PORTABLE CHARGER) .....	1
10	33739-G01		BODY PANEL, LH SIDE.....	1
11	00414-G6		BOLT, 1/4 - 20 X 3/4" LG .....	2
12	16705-G4		SCREW, 1/4 - 20 X 1/2" LG (STAINLESS STEEL) .....	2
13				
14	33750-G01		FRONT TRAY .....	1
15	11027-G2		LOCK NUT, 1/4 - 20 .....	28
16				
17				
18	32574-G2		CHARGER MOUNT DOOR ASSEMBLY .....	1
19				
20				
21	16705-G2		SCREW 1/4 - 20 X 5/8" LG (STAINLESS STEEL) .....	4
22	14390-G4		LOCK NUT, 1/4 - 20 .....	4
23	22524-G1		FOAM TAPE (CUT TO 1" LG) .....	1
24	22280-G1		TRIM, BLACK (CUT TO 3 1/2" LG) .....	1
25				
26	33291-G01		LADDER KIT (4 STEP) .....	1
27	33291-G02		LADDER KIT (6 STEP) (INCLUDES ITEMS 28 - 32).....	1
28	32556-G1		COUNTER WEIGHT .....	1
29	00659-G2		BOLT, 1/2 - 13 X 2 1/4" LG (STAINLESS STEEL) .....	3
30	00679-G3		WASHER, 1/2" (STAINLESS STEEL).....	3

When ordering parts, please specify the model and serial number of the product.

\* Indicates a component that is not available as an individual part.

G\*\* Indicates consult Customer Service Department for additional information.

ITEM	PART NO.	1 2 3 4 5	DESCRIPTION	QTY.
31	00670-G3		LOCK WASHER, 1/2" (STAINLESS STEEL) .....	3
32	00891-G4		LOCK NUT, 1/2 - 13 .....	3
33				
34	30931-G1		BACKREST FRAME .....	1
35	30917-G1		CUSHION, BACKREST .....	1
36	00126-G6		SCREW, #12 - 11 X 3/4" LG .....	3
37				
38	00462-G8		BOLT, 7/16 - 14 X 1" LG .....	4
39	00566-G2		LOCK WASHER, 7/16" .....	4
40	00532-G7		NUT, 7/16 - 14 .....	4
41				
42	71037-G02		NAMEPLATE, E-Z-GO (INCLUDES ITEM 43) .....	1
43	23093-G1		DOUBLE SIDED TAPE (CUT TO LENGTH) .....	1
44	74403-G01		LABEL (CUSHMAN) .....	1
45				
46	*		SERIAL NUMBER PLATE .....	1
47	10570-G9		RIVET, 1/8" X 11/32" LG (ALUMINUM) .....	4
48	35432-G01		LABEL (INDUSTRIAL) .....	2
49				
50	31127-G1		LABEL (DIRECTION SELECTOR) .....	1
51	27493-G01		LABEL (CHARGER OPERATION INSTRUCTIONS) .....	1
52	34359-G01		LABEL (SAFETY/OPERATION INSTRUCTIONS) .....	1
53	25775-G01		LABEL (CHARGER WARNING) .....	1
54				
55	31157-G1		SIDE RAILS .....	2
56				
57	32980-G02		PINTLE HITCH KIT (INCLUDES ITEMS 58 - 61) .....	1
58	30817-G1		PINTLE HITCH .....	1
59	00427-G4		BOLT, 3/8 - 16 X 1 1/2" LG .....	4
60	00560-G1		WASHER, 3/8" .....	8

## BODY

When ordering parts, please specify the model and serial number of the product.

\* Indicates a component that is not available as an individual part.

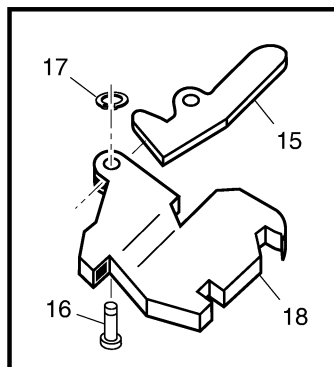
G\*\* Indicates consult Customer Service Department for additional information.

ITEM	PART NO.	1 2 3 4 5	DESCRIPTION	QTY.
61	11098-G5		LOCK NUT, 3/8 - 16 .....	4
62				
63				
64	33732-G04		'E' HITCH KIT (INCLUDES ITEMS 65 - 68) .....	1
65	33731-G01		'E' HITCH .....	1
66	00427-G6		BOLT, 3/8 - 16 X 1 3/4" LG.....	4
67	00560-G1		WASHER, 3/8" .....	8
68	11098-G5		LOCK NUT, 3/8 - 16 .....	4

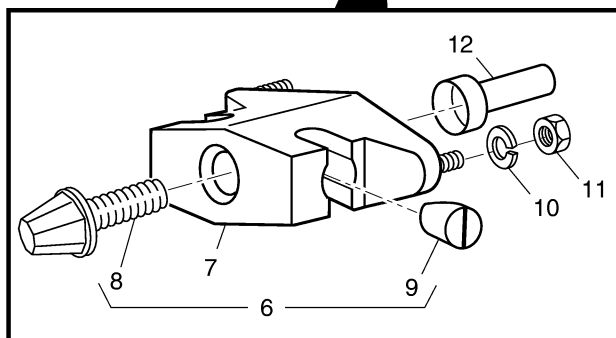
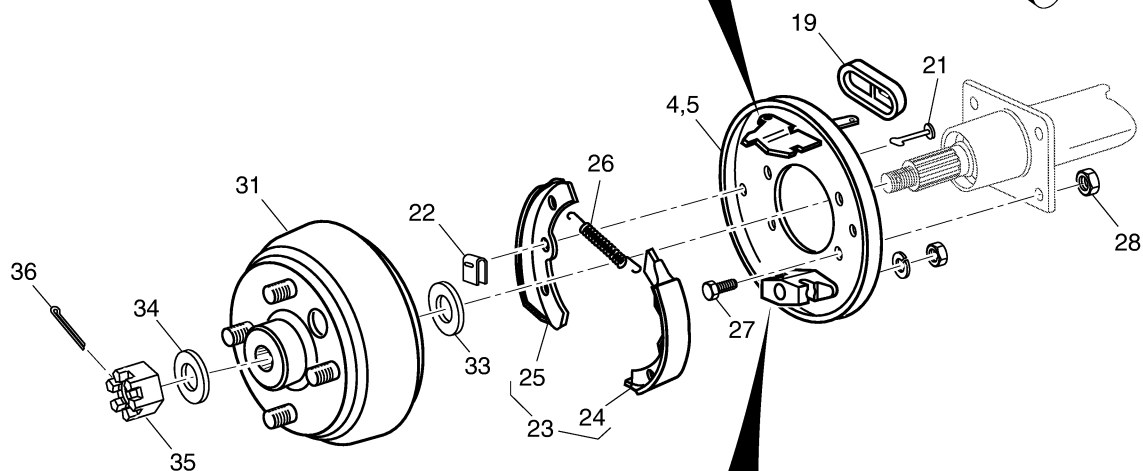


# BRAKES

- 1 - Includes Items 4, 6 - 26
- 2 - Includes Items 5 - 26
- 23 - Includes Items 24, 25



Front Of Vehicle



When ordering parts, please specify the model and serial number of the product.

\* Indicates a component that is not available as an individual part.

G\*\* Indicates consult Customer Service Department for additional information.

ITEM	PART NO.	1 2 3 4 5	DESCRIPTION	QTY.
1	20938-G1		BRAKE ASSEMBLY, L.H. (INCLUDES ITEMS 4, 6 - 26) .....	1
2	20938-G2		BRAKE ASSEMBLY, R.H. (INCLUDES ITEMS 5 - 26).....	1
3				
4	22519-G1		BACKING PLATE, L.H. ....	1
5	22518-G1		BACKING PLATE, R.H. ....	1
6	22516-G1		ADJUSTER ASSEMBLY (INCLUDES ITEMS 7 - 9) .....	1
7	22520-G1		ADJUSTER BODY (INCLUDES ITEMS 8, 9).....	1
8	17287-G1		ADJUSTER BOLT .....	1
9	17289-G1		PISTON ANCHOR .....	2
10	00664-G7		LOCK WASHER, 1/4" (STAINLESS STEEL) .....	2
11	13632-G1		NUT, 6MM.....	2
12	17294-G1		ADJUSTING BOLT CAP .....	1
13				
14				
15	22512-G1		ACTUATING LEVER.....	1
16	22513-G1		LEVER PIN .....	1
17	22514-G1		'U' CLIP .....	1
18	22515-G1		SLIDING BLOCK .....	1
19	22511-G1		DUST COVER .....	1
20				
21	17292-G1		TENSION PIN .....	2
22	17291-G1		SPRING CLAMP .....	2
23	23398-G1		BRAKE SHOE SET (INCLUDES ITEMS 24, 25) .....	1
24	23355-G1		BRAKE SHOE (LEADING) .....	1
25	23355-G2		BRAKE SHOE (TRAILING) .....	1
26	17290-G1		BRAKE SPRING .....	2
27	17083-G1		BOLT, 5/16 - 24 X 3/4" LG .....	4
28	15126-G1		LOCK NUT, 5/16 - 24 .....	4
29				
30				

## BRAKES

When ordering parts, please specify the model and serial number of the product.

\* Indicates a component that is not available as an individual part.

G\*\* Indicates consult Customer Service Department for additional information.

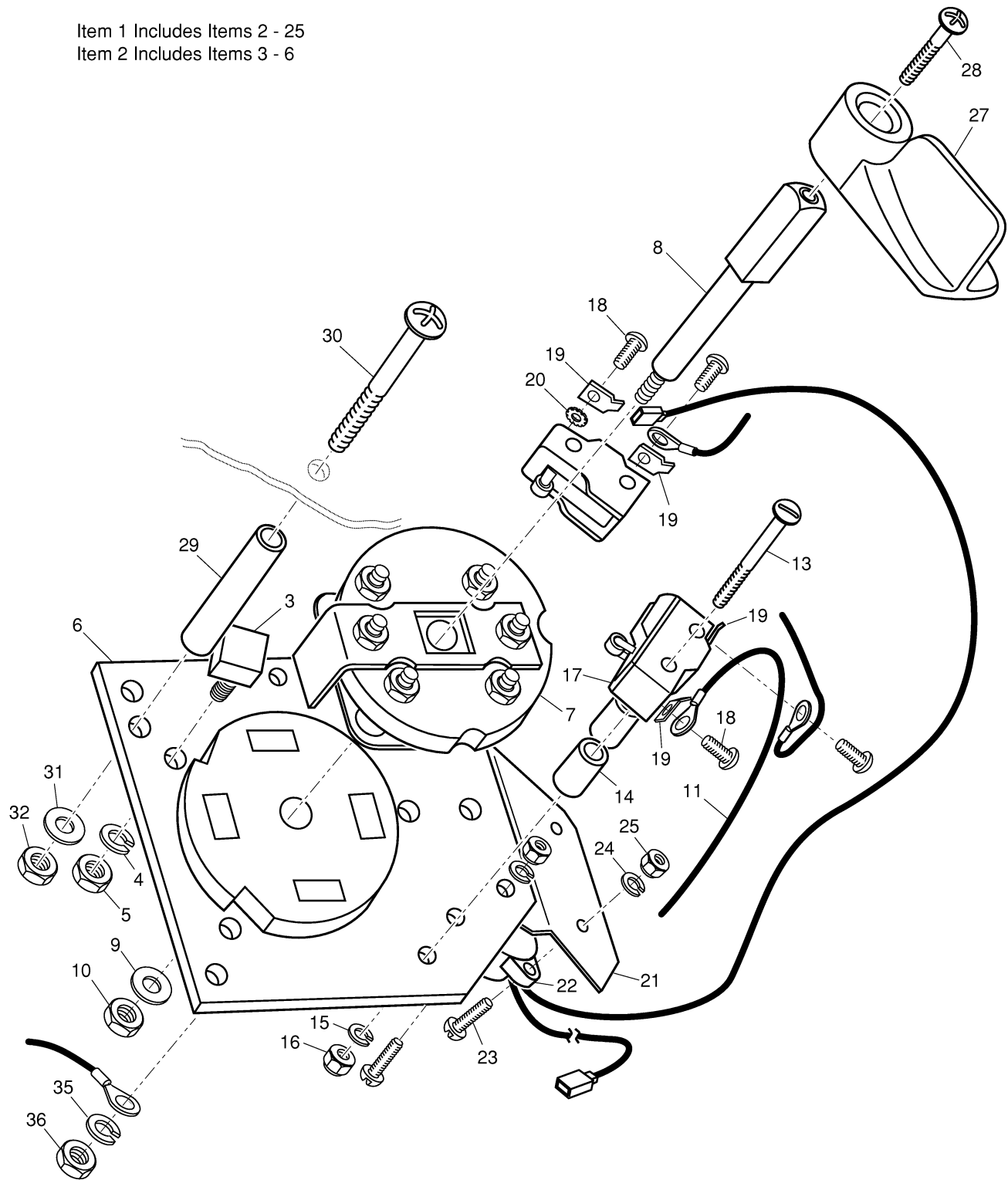
[illegible]



# DIRECTION SELECTOR

Item 1 Includes Items 2 - 25

Item 2 Includes Items 3 - 6



# DIRECTION SELECTOR

When ordering parts, please specify the model and serial number of the product.

\* Indicates a component that is not available as an individual part.

G\*\* Indicates consult Customer Service Department for additional information.

ITEM	PART NO.	1 2 3 4 5	DESCRIPTION	QTY.
1	32042-G2		DIRECTION SELECTOR ASSEMBLY (INCLUDES ITEMS 2 - 25) .....	1
2	14651-G1		CONTACT BOARD ASSEMBLY (INCLUDES ITEMS 3 - 6) .....	1
3	24940-G1		STOP .....	2
4	00664-G7		LOCK WASHER, 1/4" (STAINLESS STEEL) .....	2
5	00532-G1		NUT, 1/4 - 20 .....	2
6	*		BOARD AND CONTACT .....	1
7	12835-G1		CAM .....	1
8	19470-G1		SHAFT .....	1
9	00560-G1		WASHER, 3/8" .....	1
10	14390-G1		LOCK NUT, 3/8 - 24 .....	1
11	20757-G1		18 GA WIRE (RED, 7 3/4") .....	1
12				
13	00645-G6		SCREW, #6 - 32 X 1 3/4" LG .....	4
14	12806-G1		SPACER .....	4
15	00565-G3		LOCK WASHER, #6 .....	4
16	00525-G5		NUT, #6 - 32 .....	4
17	10606-G2		MICRO SWITCH (HEAVY DUTY) .....	2
18	13514-G1		SCREW, #6 - 32 X 7/32" LG .....	4
19	14628-G1		FASTON TAB, 5/16" X 5/16" .....	3
20	00567-G3		LOCK WASHER, #6 .....	2
21	32043-G1		BUZZER BRACKET .....	1
22	17940-G1		REVERSE WARNING BUZZER .....	1
23	00138-G4		SCREW, #6 - 32 X 1/2" LG .....	4
24	00565-G3		LOCK WASHER, #6 .....	4
25	00525-G5		NUT, #6 - 32 .....	4
26				
27	19886-G1		DIRECTION SELECTOR HANDLE .....	1
28	00740-G4		SCREW, #10 - 32 X 1/2" LG (STAINLESS STEEL) .....	1
29	30318-G2		SPACER .....	3
30	00753-G7		SCREW, 1/4 - 20 X 2 1/2" LG (STAINLESS STEEL) .....	3

## DIRECTION SELECTOR

\* Indicates a component that is not available as an individual part.

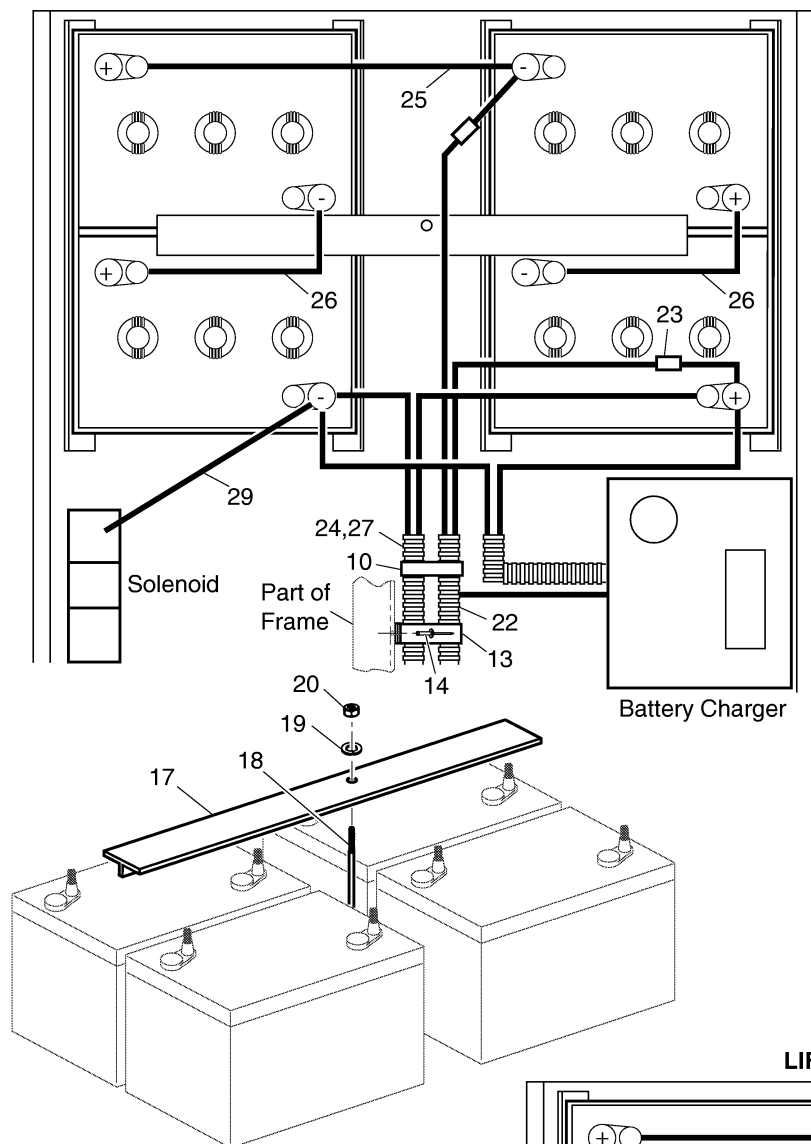
G\*\* Indicates consult Customer Service Department for additional information.

[illegible]

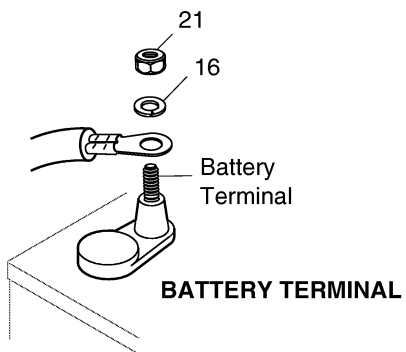


# ELECTRICAL SYSTEM

## ON BOARD BATTERIES

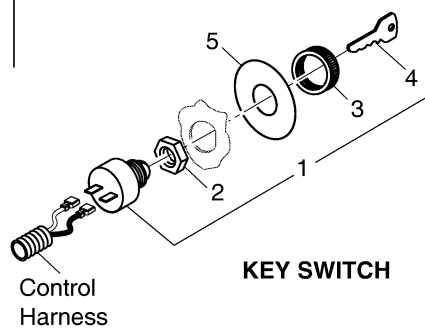
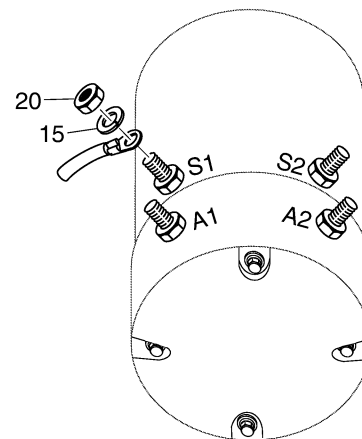


## BATTERY HOLD DOWN



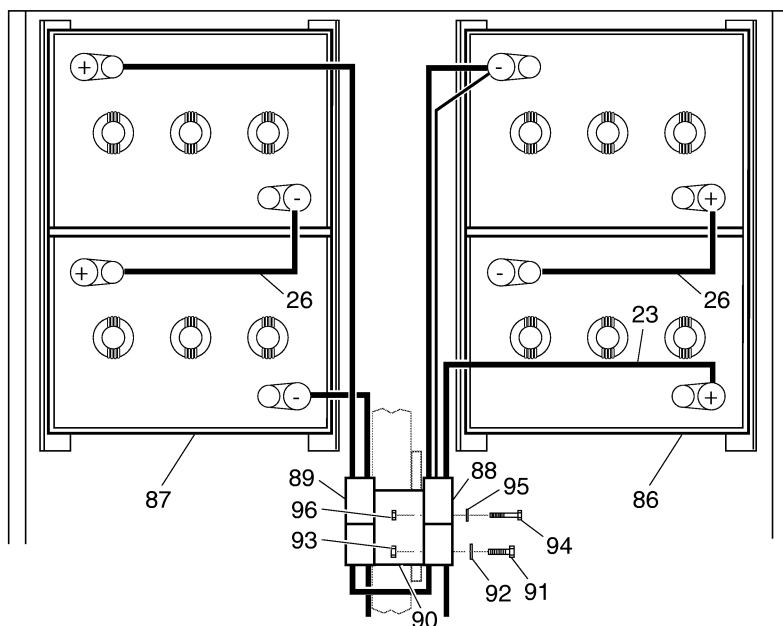
## BATTERY TERMINAL

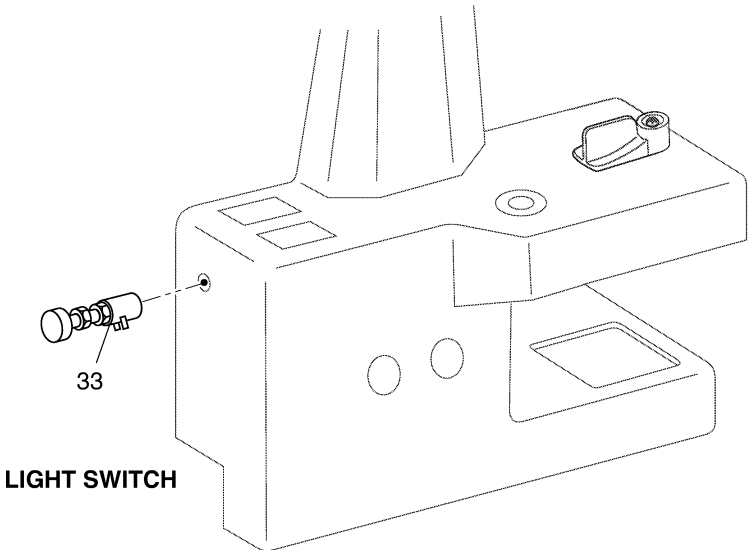
## MOTOR TERMINALS



## KEY SWITCH

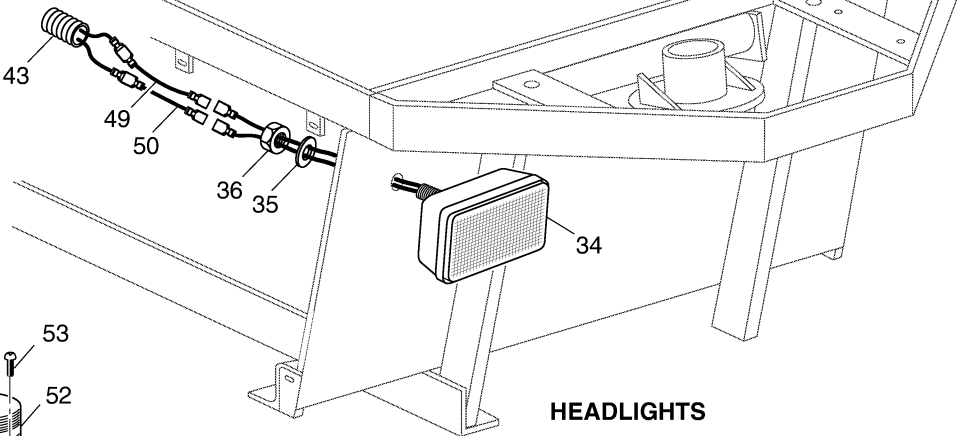
## LIFT OUT BATTERIES



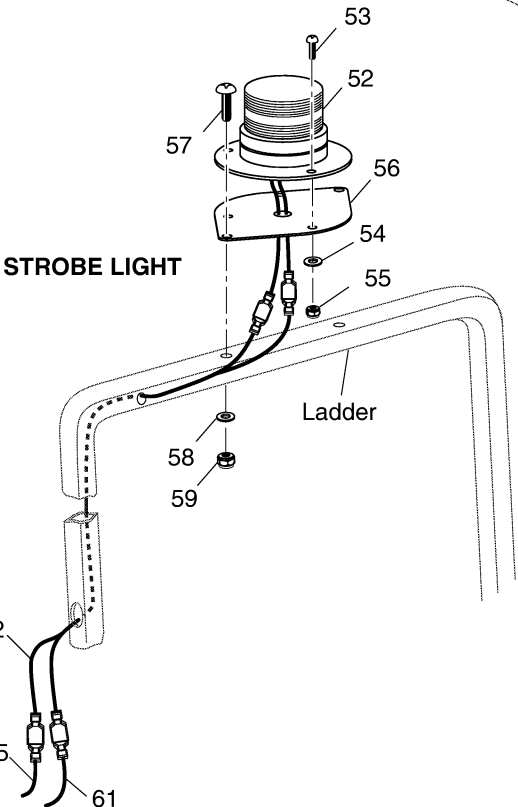


**LIGHT SWITCH**

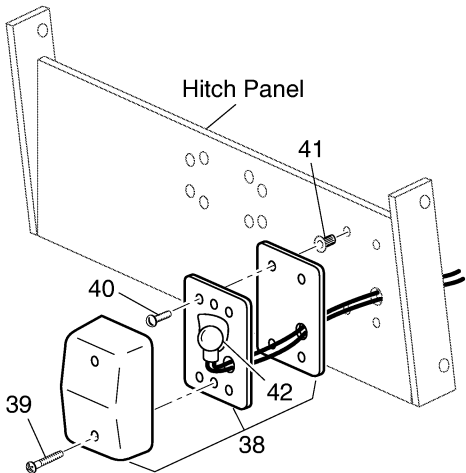
31 - Includes Items 33 - 45  
32 - Includes Items 33 - 49  
51 - Includes Items 52 - 65



**HEADLIGHTS**

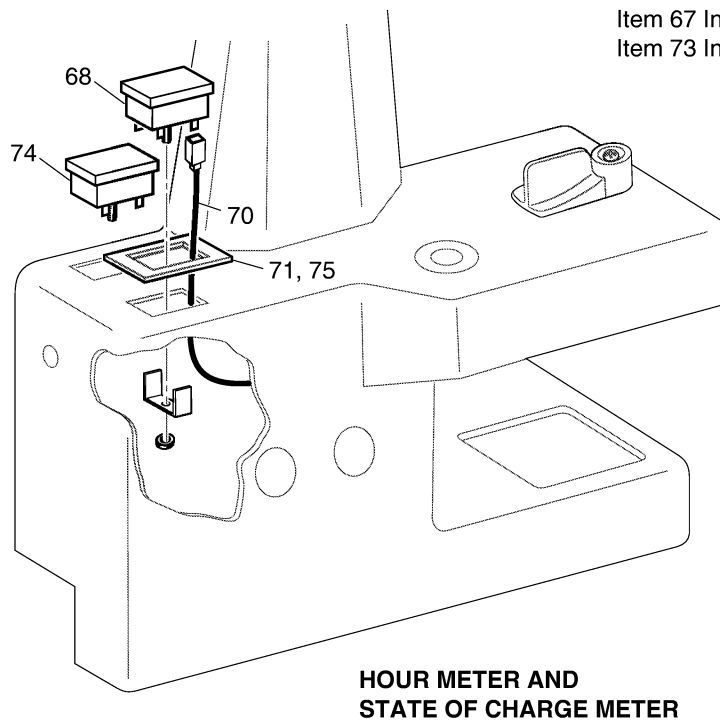
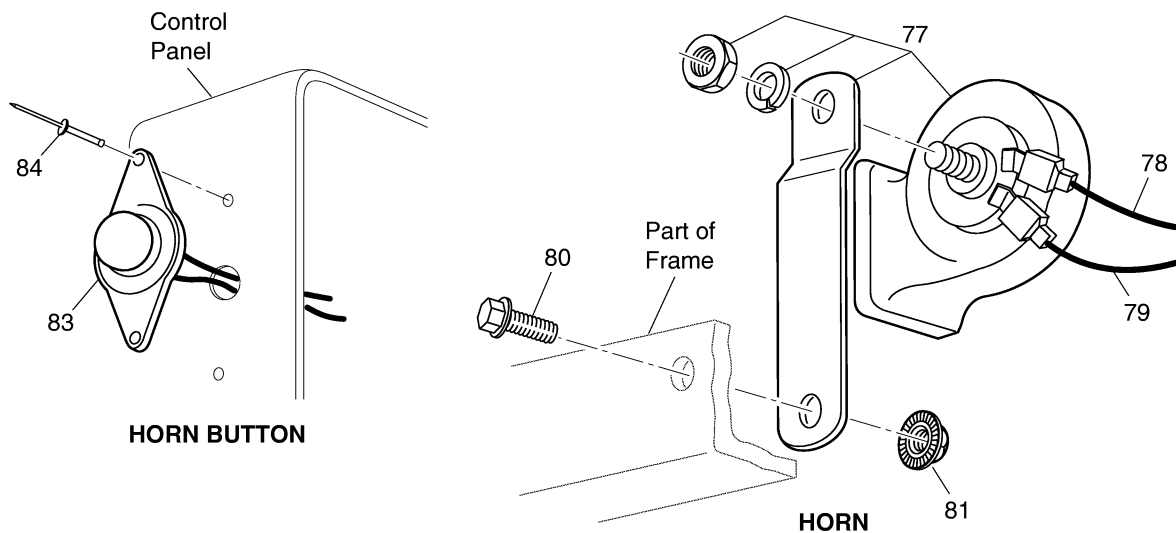


**STROBE LIGHT**



**TAILLIGHT**

# ELECTRICAL SYSTEM



Item 67 Includes Items 68 - 71  
Item 73 Includes Items 74 - 75

# ELECTRICAL SYSTEM

When ordering parts, please specify the model and serial number of the product.

\* Indicates a component that is not available as an individual part.

G\*\* Indicates consult Customer Service Department for additional information.

ITEM	PART NO.	1 2 3 4 5	DESCRIPTION	QTY.
1	17421-G1		KEY SWITCH (INCLUDES ITEMS 2 - 4) .....	1
2	*		PAL NUT .....	1
3	17137-G1		FACE NUT, 3/4 - 20 .....	1
4	17063-G1		IGNITION KEY .....	1
5	30533-G1		ON/OFF PLATE.....	1
6				
7				
8	31114-G2		CABLE RETAINER.....	3
9	00852-G1		RIVET, 3/16" X 7/16" LG .....	3
10	17618-G1		WIRE TIE .....	10
11	20058-G1		WIRE TIE ADHESIVE BASE.....	7
12				
13	11845-G2		INSULATED CABLE CLAMP, 3/4" .....	2
14	00852-G1		RIVET, 3/16" X 7/16" LG .....	2
15	00993-G01		LOCK WASHER, 5/16" (SILICON BRONZE) .....	4
16	00565-G8		WASHER, 5/16" (SILICON BRONZE).....	8
17	31387-G1		BATTERY HOLD DOWN.....	1
18	30429-G2		BATTERY HOLD DOWN ROD, 5/16 - 18.....	1
19	00642-G8		WASHER, 5/16" .....	1
20	00532-G3		NUT, 5/16 - 18 .....	4
21	00702-G2		NUT, 5/16 - 18 .....	8
22	32626-G1		CONTROL HARNESS .....	1
23	18392-G1		FUSE (15 AMP).....	2
24	32615-G1		POWER HARNESS (ON BOARD CHARGER).....	1
25	31178-G1		6 GA WIRE (BLACK, 18 1/4") .....	1
26	31178-G2		6 GA WIRE (BLACK, 8 3/4") .....	2
27	32642-G1		POWER HARNESS (PORTABLE CHARGER) .....	1
28				
29	32684-G1		10 GA WIRE (BLACK, 18 1/2") .....	1
30				

# ELECTRICAL SYSTEM

When ordering parts, please specify the model and serial number of the product.

\* Indicates a component that is not available as an individual part.

G\*\* Indicates consult Customer Service Department for additional information.

ITEM	PART NO.	1 2 3 4 5	DESCRIPTION	QTY.
31	32984-G02		LIGHT KIT (INCLUDES ITEMS 33 - 45) .....	1
32	32984-G03		LIGHT KIT (W/LIFT OUT BATTERIES) (INCLUDES ITEMS 33 - 49) .....	1
33	18431-G1		LIGHT SWITCH ASSEMBLY .....	1
34	30394-G1		HEAD LIGHT ASSEMBLY .....	2
35	00566-G2		LOCK WASHER, .....	2
36	00533-G1		NUT, 1/2 - 13.....	2
37				
38	22288-G1		TAILLIGHT ASSEMBLY .....	1
39	00513-G4		SCREW, #8 - 18 X 1 1/2" LG .....	2
40	00180-G6		SCREW, #10 - 24 X 3/4" LG .....	4
41	00739-G1		WELL NUT, #10 - 24 .....	4
42	21759-G1		LIGHT BULB .....	1
43	32985-G01		WIRE HARNESS (LIGHTS).....	1
44	20058-G1		WIRE TIE ADHESIVE BASE .....	4
45	17618-G1		WIRE TIE .....	12
46				
47	33021-G01		WIRE HARNESS (LIFT OUT BATTERIES) .....	1
48	17902-G1		TAB ADAPTOR .....	1
49	33208-G02		16 GA WIRE (WHITE, 6") .....	2
50	33208-G01		16 GA WIRE (BLACK, 6") .....	2
51	33212-G01		STROBE LIGHT KIT (INCLUDES ITEMS 52 - 65).....	1
52	25617-G01		STROBE LIGHT ASSEMBLY .....	1
53	00156-G4		SCREW, #10 - 32 X 1/2" LG .....	3
54	00594-G5		LOCK WASHER, #10 .....	3
55	00672-G4		NUT, #10 - 32 (STAINLESS STEEL) .....	3
56	33201-G01		STROBE MOUNTING BRACKET .....	1
57	00753-G7		SCREW, 1/4 - 20 X 2 1/2" LG (STAINLESS STEEL).....	2
58	00660-G7		WASHER, 1/4" (STAINLESS STEEL).....	2
59	00654-G2		LOCK NUT, 1/4 - 20 (STAINLESS STEEL).....	2
60	17902-G1		TAB ADAPTER .....	1

# ELECTRICAL SYSTEM

When ordering parts, please specify the model and serial number of the product.

\* Indicates a component that is not available as an individual part.

G\*\* Indicates consult Customer Service Department for additional information.

ITEM	PART NO.	1 2 3 4 5	DESCRIPTION	QTY.
61	25615-G01		16 GA WIRE (RED, 41") .....	1
62	25616-G01		16 GA WIRE (GRAY, 83") .....	1
63	22594-G1		FUSE HOLDER .....	1
64	17618-G1		WIRE TIE .....	9
65	33203-G01		16 GA WIRE (GRAY, 48") .....	1
66				
67	33587-G01		STATE OF CHARGE METER ASSEMBLY (INCLUDES ITEMS 68 - 71) .....	1
68	33636-G02		STATE OF CHARGE METER (24 VOLT) .....	1
69	17902-G1		TAB ADAPTER .....	1
70	25978-G62		18 GA WIRE (RED, 12") .....	1
71	28178-G01		MOUNTING PLATE .....	1
72				
73	33586-G01		HOUR METER ASSEMBLY (INCLUDES ITEMS 74 - 75) .....	1
74	33633-G01		HOUR METER (18 - 60 VDC).....	1
75	28178-G01		MOUNTING PLATE .....	1
76				
77	32860-G1		HORN ASSEMBLY.....	1
78	25978-G91		18 GA WIRE (ORANGE, 12").....	1
79	35111G01		18 GA WIRE (YELLOW/RED, 12").....	1
80	00661-G8		BOLT, 1/4 - 20 X 1" LG (STAINLESS STEEL).....	1
81	14390-G4		LOCK NUT, 1/4 - 20 .....	1
82				
83	20948-G1		HORN SWITCH.....	1
84	14601-G8		RIVET, 3/16" X 7/16" LG (ALUMINUM) .....	2
85				
86	32660-G1		LIFT OUT BATTERY ASSEMBLY (RIGHT) .....	1
87	32660-G2		LIFT OUT BATTERY ASSEMBLY (LEFT) .....	1
88	32662-G1		CHARGER CONNECTOR (LIFT OUT BATTERY) (RH) .....	1
89	32590-G1		CHARGER CONNECTOR (LIFT OUT BATTERY) (LH).....	1
90	32561-G1		BATTERY CONNECTOR BRACKET .....	1

# ELECTRICAL SYSTEM

When ordering parts, please specify the model and serial number of the product.

\* Indicates a component that is not available as an individual part.

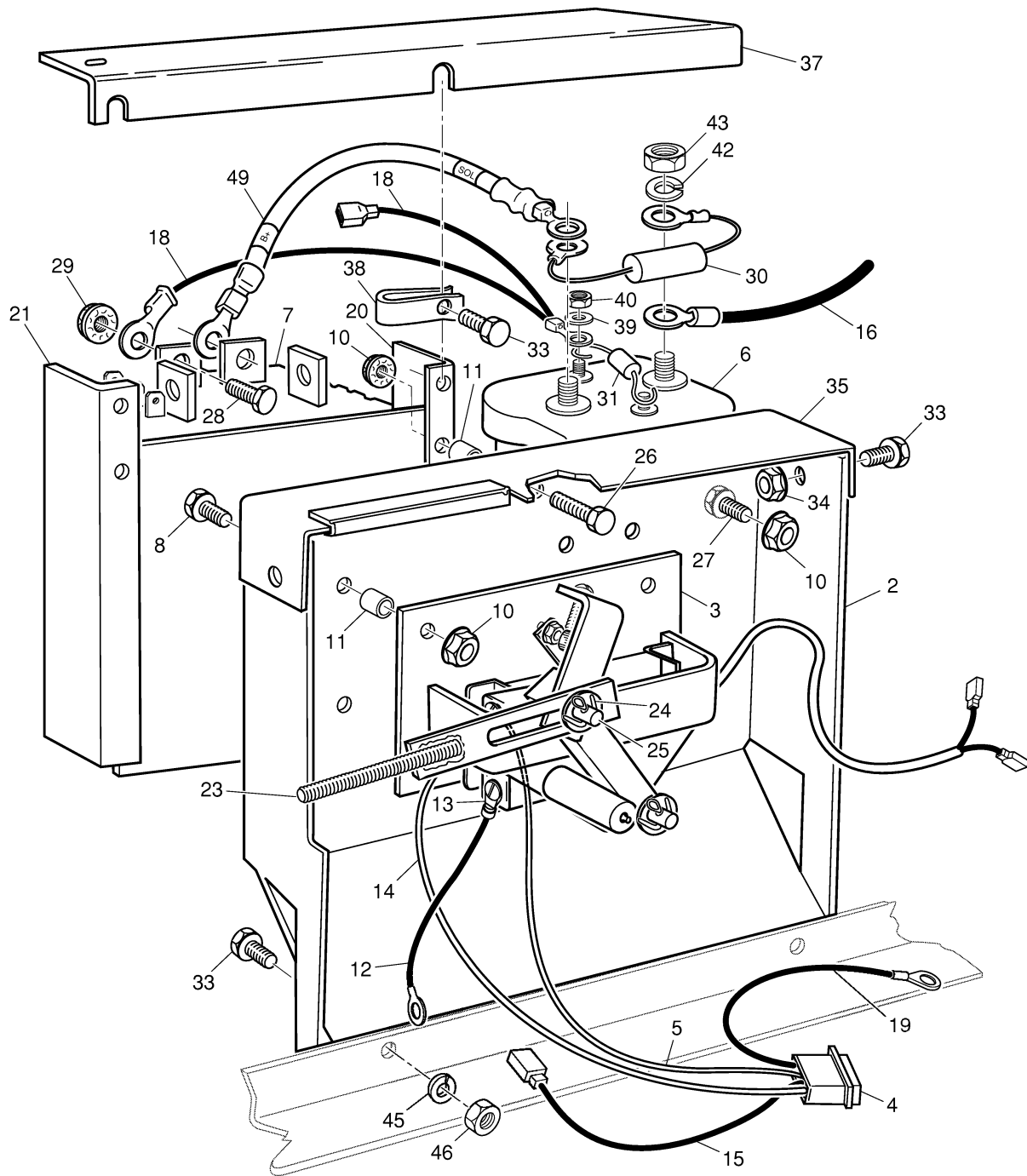
G\*\* Indicates consult Customer Service Department for additional information.

ITEM	PART NO.	1 2 3 4 5	DESCRIPTION	QTY.
91	00438-G6		BOLT, 5/16 - 18 X 3/4" LG .....	2
92	00565-G8		LOCK WASHER, 5/16" .....	2
93	00532-G3		NUT, 5/16 - 18 .....	2
94	00415-G4		BOLT, 1/4 - 20 X 1 1/2" LG .....	6
95	00554-G7		WASHER, 1/4" .....	6
96	14390-G4		NUT, 1/4 - 20 .....	6



# ELECTRONIC SPEED CONTROL

Item 1 Includes Items 2 - 31



# ELECTRONIC SPEED CONTROL

When ordering parts, please specify the model and serial number of the product.

\* Indicates a component that is not available as an individual part.

G\*\* Indicates consult Customer Service Department for additional information.

ITEM	PART NO.	1 2 3 4 5	DESCRIPTION	QTY.
1	32568-G1		SPEED CONTROLLER ASSEMBLY (INCLUDES ITEMS 2 - 31).....	1
2	32558-G1		SPEED CONTROL BRACKET .....	1
3	32636-G1		POTENTIOMETER SUPPORT .....	1
4	24002-G1		FOUR PIN CONNECTOR (FEMALE) .....	1
5	32630-G1		16 GA WIRE (WHITE/RED, 22 3/4") .....	1
6	20468-G3		HEAVY DUTY SOLENOID (24 VOLT).....	1
7	20972-G1		SPEED CONTROLLER.....	1
8	00414-G6		BOLT, 1/4 - 20 X 3/4" LG .....	3
9				
10	11027-G2		LOCK NUT, 1/4 - 20 .....	9
11	23726-G1		SPACER, 1/4" .....	4
12	32628-G1		16 GA WIRE (ORANGE, 15").....	1
13	14628-G1		FASTON TAB, 5/16" X 5/16" .....	1
14	32629-G1		16 GA WIRE (YELLOW, 23 1/2") .....	1
15	32632-G1		16 GA WIRE (BLUE, 18 3/4").....	1
16	32684-G1		10 GA WIRE (BLACK, 18 1/2") .....	1
17	32612-G3		6 GA WIRE (BLACK, 6 3/4") .....	1
18	32627-G1		16 GA WIRE (BLACK, 18") .....	1
19	32631-G1		16 GA WIRE (RED/WHITE, 8 1/2") .....	1
20	32620-G1		ANGLE SHIELD, RH .....	1
21	32620-G2		ANGLE SHIELD, LH.....	1
22				
23	30798-G1		ACCELERATOR LINK.....	1
24	10387-G2		COTTER PIN, 3/32 X 1" LG .....	1
25	14443-G4		CLEVIS PIN, 5/16" X 7/8" LG.....	1
26	00414-G7		BOLT, 1/4 - 20 X 7/8" LG .....	4
27	00414-G4		BOLT, 1/4 - 20 X 1/2" LG .....	2
28	00270-G5		BOLT, 5/16 - 18 X 5/8" LG .....	4
29	11027-G1		LOCK NUT, 5/16 - 18 .....	4
30	21764-G1		RESISTOR .....	1

# ELECTRONIC SPEED CONTROL

When ordering parts, please specify the model and serial number of the product.

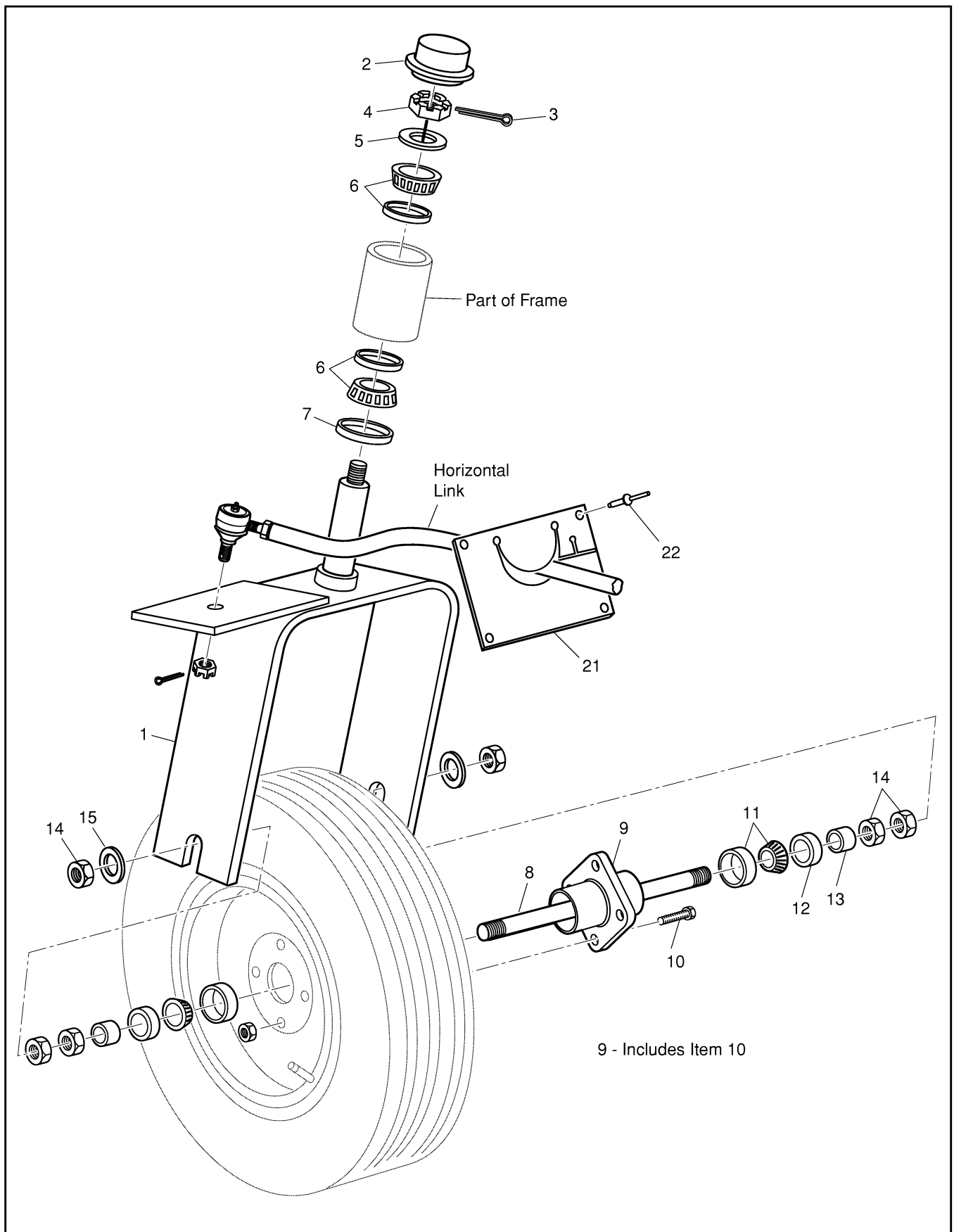
\* Indicates a component that is not available as an individual part.

G\*\* Indicates consult Customer Service Department for additional information.

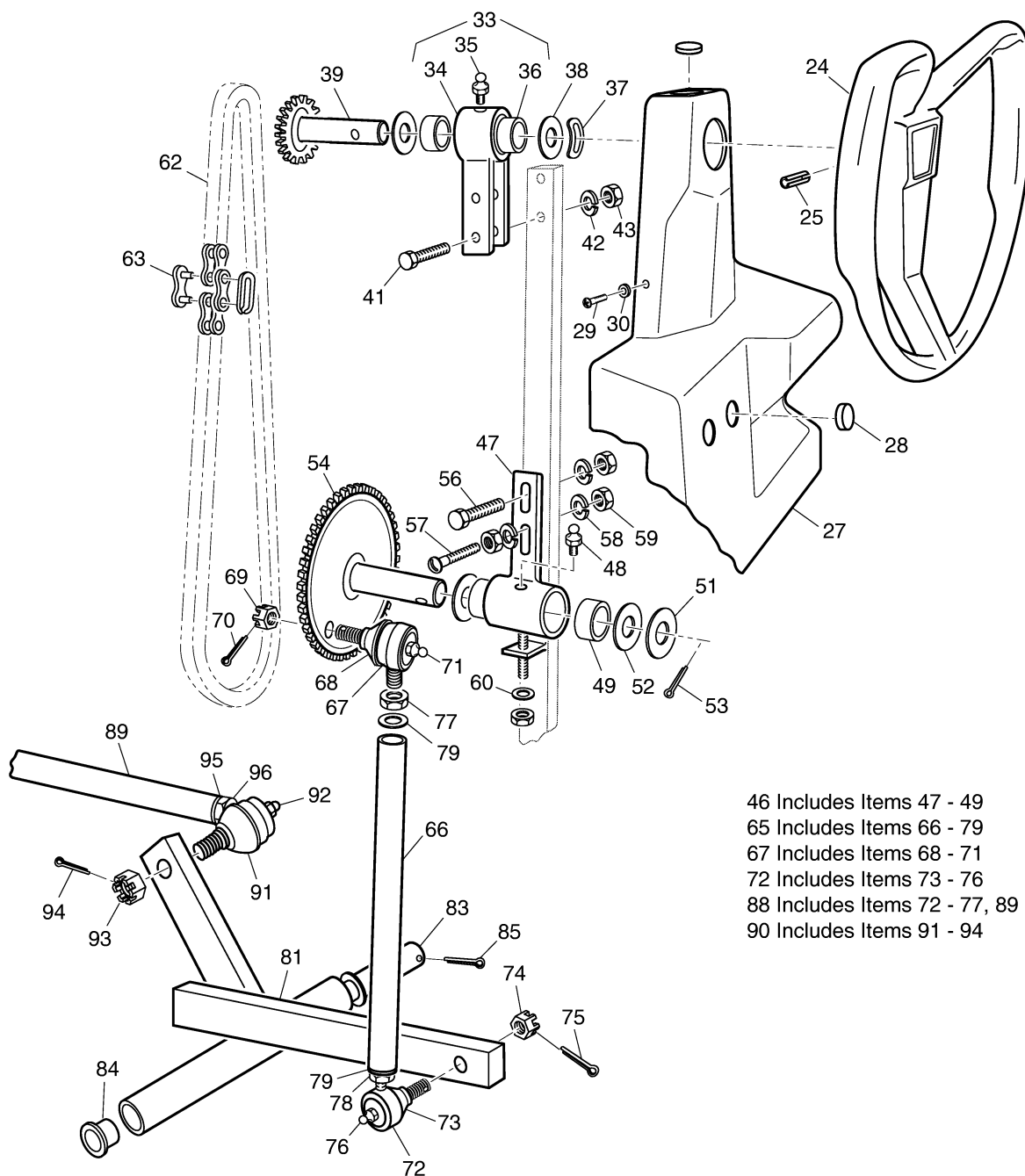
ITEM	PART NO.	1 2 3 4 5	DESCRIPTION	QTY.
31	30353-G1		DIODE, 3 AMP .....	1
32				
33	00661-G8		BOLT, 1/4 - 20 X 1" LG (STAINLESS STEEL) .....	6
34	11027-G2		LOCK NUT, 1/4 - 20 .....	2
35	32618-G1		LINKAGE SHIELD .....	1
36				
37	32619-G1		SPEED CONTROL COVER .....	1
38	00709-G1		'U' NUT, 1/4 - 20 .....	2
39	00565-G5		LOCK WASHER, #10 .....	2
40	00526-G4		NUT, #10 - 32 .....	2
41				
42	00565-G8		LOCK WASHER, 5/16" .....	2
43	00544-G4		JAM NUT, 5/16 - 24 .....	2
44				
45	01110-G01		WASHER, 1/4" (STAINLESS STEEL) .....	1
46	14390-G4		LOCK NUT, 1/4 - 20 .....	1
47				
48	25949-G01		VARISTOR MOV .....	1
49	25972-G83		6 GA WIRE (BLACK, 9") .....	1
50	25977-G85		16 GA WIRE (BLUE, 23") .....	1



# FRONT FORK AND STEERING



# FRONT FORK AND STEERING



46 Includes Items 47 - 49

65 Includes Items 66 - 79

67 Includes Items 68 - 71

72 Includes Items 73 - 76

88 Includes Items 72 - 77, 89 - 96

90 Includes Items 91 - 94

# FRONT FORK AND STEERING

When ordering parts, please specify the model and serial number of the product.

\* Indicates a component that is not available as an individual part.

G\*\* Indicates consult Customer Service Department for additional information.

ITEM	PART NO.	1 2 3 4 5	DESCRIPTION	QTY.
1	30905-G1		FRONT FORK .....	1
2	30146-G1		DUST CAP .....	1
3	10387-G5		COTTER PIN, 3/32" X 1 1/4" LG .....	1
4	00536-G8		CASTELLATED NUT, 3/4 - 16 .....	1
5	00571-G8		WASHER, 3/4" .....	1
6	50892-G1		BEARNG AND RACE ASSEMBLY (COMPLETE) .....	1
7	12092-G1		GREASE SEAL .....	1
8	10223-G7		FRONT AXLE .....	1
9	19888-G1		HUB (INCLUDES ITEM 10) .....	1
10	19862-G1		LUG BOLT, 1/2 - 20 X 1 3/16" LG .....	4
11	50908-G1		BEARING AND RACE .....	2
12	19471-G1		GREASE SEAL .....	2
13	11655-G2		AXLE SPACER .....	2
14	00667-G8		JAM NUT, 3/4 - 16 (STAINLESS STEEL) .....	6
15	00571-G8		WASHER, 3/4" .....	3
16				
17				
18				
19				
20				
21	30878-G1		SPLASH SHIELD .....	1
22	14269-G1		RIVET, 3/16" X 1/2" LG .....	4
23				
24	30832-G1		STEERING WHEEL .....	1
25	00796-G1		ROLL PIN, 5/16" X 1 1/4" LG .....	1
26				
27	33175-G**		CONTROL PANEL COVER .....	1
28	34507-G01		HOLE PLUG .....	3
29	00102-G6		SCREW, #8 - 18 X 3/4" LG .....	11
30	00559-G4		WASHER, #8 .....	11

# FRONT FORK AND STEERING

When ordering parts, please specify the model and serial number of the product.

\* Indicates a component that is not available as an individual part.

G\*\* Indicates consult Customer Service Department for additional information.

ITEM	PART NO.	1 2 3 4 5	DESCRIPTION	QTY.
31				
32				
33	31922-G1		UPPER FIXED HUB ASSEMBLY (INCLUDES ITEMS 34 - 36) .....	1
34	30866-G1		UPPER HUB (FIXED) .....	1
35	10389-G3		GREASE FITTING, STRAIGHT .....	1
36	30154-G1		BUSHING.....	2
37	00731-G1		SPRING WASHER .....	1
38	30156-G1		THRUST WASHER, 3/4" .....	2
39	30833-G1		SPROCKET AND SHAFT (UPPER) .....	1
40				
41	00439-G8		BOLT, 5/16 - 18 X 2" LG.....	2
42	00565-G8		LOCK WASHER, 5/16".....	2
43	00532-G3		NUT, 5/16 - 18 .....	2
44				
45				
46	31921-G1		HUB ASSEMBLY (LOWER, SLIDING) (INCLUDES ITEMS 47 - 49) .....	1
47	30869-G1		HUB (LOWER, SLIDING) .....	1
48	18456-G1		GREASE FITTING, 90° .....	1
49	30154-G1		BUSHING.....	2
50				
51	00571-G8		WASHER, 3/4.....	1
52	30156-G1		THRUST WASHER, 3/4" .....	2
53	10387-G9		COTTER PIN, 1/8" X 1 1/4" LG.....	2
54	30861-G1		SPROCKET AND SHAFT (LOWER).....	1
55				
56	00271-G8		BOLT, 5/16 - 18 X 2" LG .....	1
57	00743-G1		SCREW, 5/16 - 18 X 3 1/2" LG.....	1
58	00565-G8		LOCK WASHER, 5/16".....	3
59	00532-G3		NUT, 5/16 - 18 .....	4
60	00565G8		LOCK WASHER, 5/16".....	1

## FRONT FORK AND STEERING

When ordering parts, please specify the model and serial number of the product.

\* Indicates a component that is not available as an individual part.

G\*\* Indicates consult Customer Service Department for additional information.

ITEM	PART NO.	1 2 3 4 5	DESCRIPTION	QTY.
61				
62	30870-G1		CHAIN, ROLLER.....	1
63	30871-G1		MASTER LINK .....	1
64				
65	30420-G1		VERTICAL LINK ASSEMBLY (INCLUDES ITEMS 66 - 79) .....	1
66	30873-G1		VERTICAL LINK .....	1
67	27205-G02		TIE ROD END, RH THREAD (INCLUDES ITEMS 68 - 71) .....	1
68	50641-G1		RUBBER BOOT .....	1
69	50209-G1		CASTELLATED NUT, 7/16 - 20 .....	1
70	10387-G1		COTTER PIN, 1/8" X 1 1/2" LG.....	1
71	10389-G3		GREASE FITTING, STRAIGHT .....	1
72	27205-G01		TIE ROD END, LH THREAD (INCLUDES ITEMS 73 - 76).....	1
73	50641-G1		RUBBER BOOT .....	1
74	50209-G1		CASTELLATED NUT, 7/16 - 20 .....	1
75	10387-G1		COTTER PIN, 1/8 X 1 1/2" LG .....	1
76	10389-G3		GREASE FITTING, STRAIGHT .....	1
77	18434-G3		JAM NUT, 9/16 - 18 (LEFT HAND THREADS) .....	1
78	18434-G4		JAM NUT, 9/16 - 18 (RIGHT HAND THREADS).....	1
79	00595-G4		LOCK WASHER, 9/16" .....	2
80				
81	30874-G1		BELLCRANK.....	1
82				
83	30772-G2		PIVOT SHAFT, 8" .....	1
84	70581-G01		BUSHING .....	2
85	10387-G9		COTTER PIN, 1/8" X 1 1/4" LG.....	1
86				
87				
88	30419-G1		HORIZONTAL LINKAGE ASSEMBLY (INCLUDES ITEMS 72 -77, 89 - 96).....	1
89	30872-G1		HORIZONTAL LINK .....	1
90	27205-G02		TIE ROD END, RH THREAD (INCLUDES ITEMS 91 - 94) .....	1

## FRONT FORK AND STEERING

When ordering parts, please specify the model and serial number of the product.

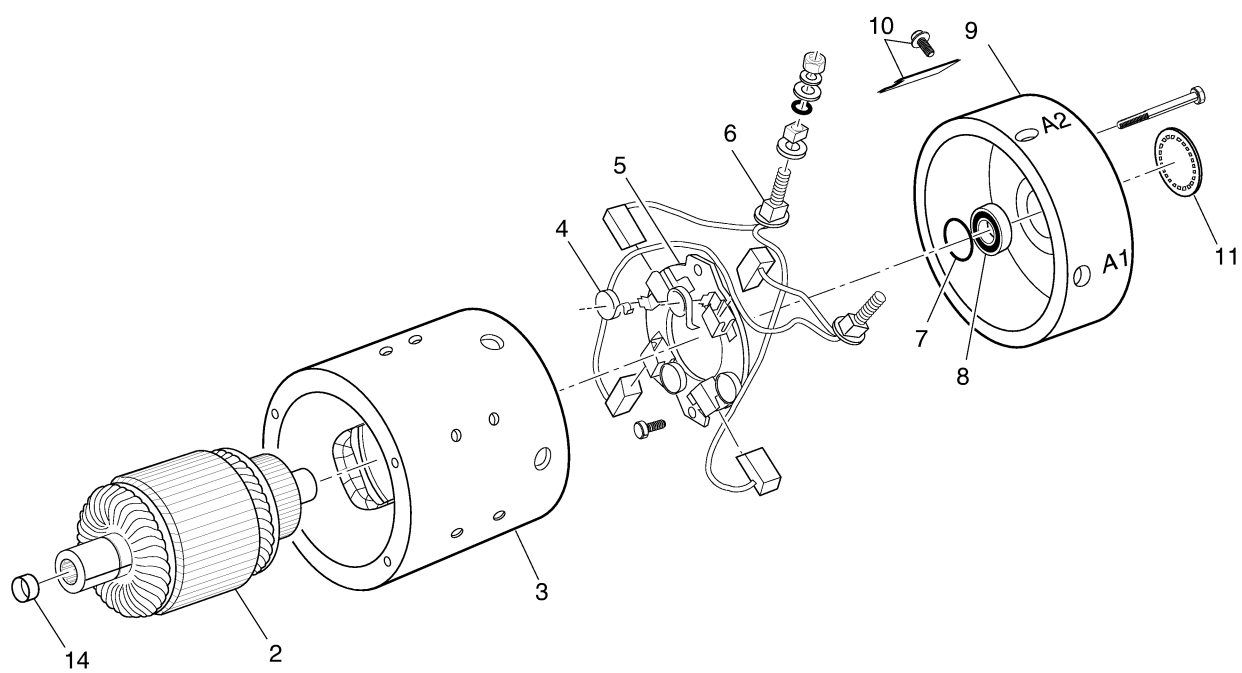
\* Indicates a component that is not available as an individual part.

G\*\* Indicates consult Customer Service Department for additional information.

ITEM	PART NO.	1	2	3	4	5	DESCRIPTION	QTY.
91	50641-G1						RUBBER BOOT .....	1
92	10389-G3						GREASE FITTING, STRAIGHT .....	1
93	50209-G1						CASTELLATED NUT, 7/16 - 20 .....	1
94	10387-G1						COTTER PIN, 1/8" X 1 1/2" LG .....	1
95	18434-G4						JAM NUT, 9/16 - 18 (RIGHT HAND THREAD) .....	1
96	00595-G4						LOCK WASHER, 9/16" .....	1

# MOTOR

1 - Includes Items 2 - 11



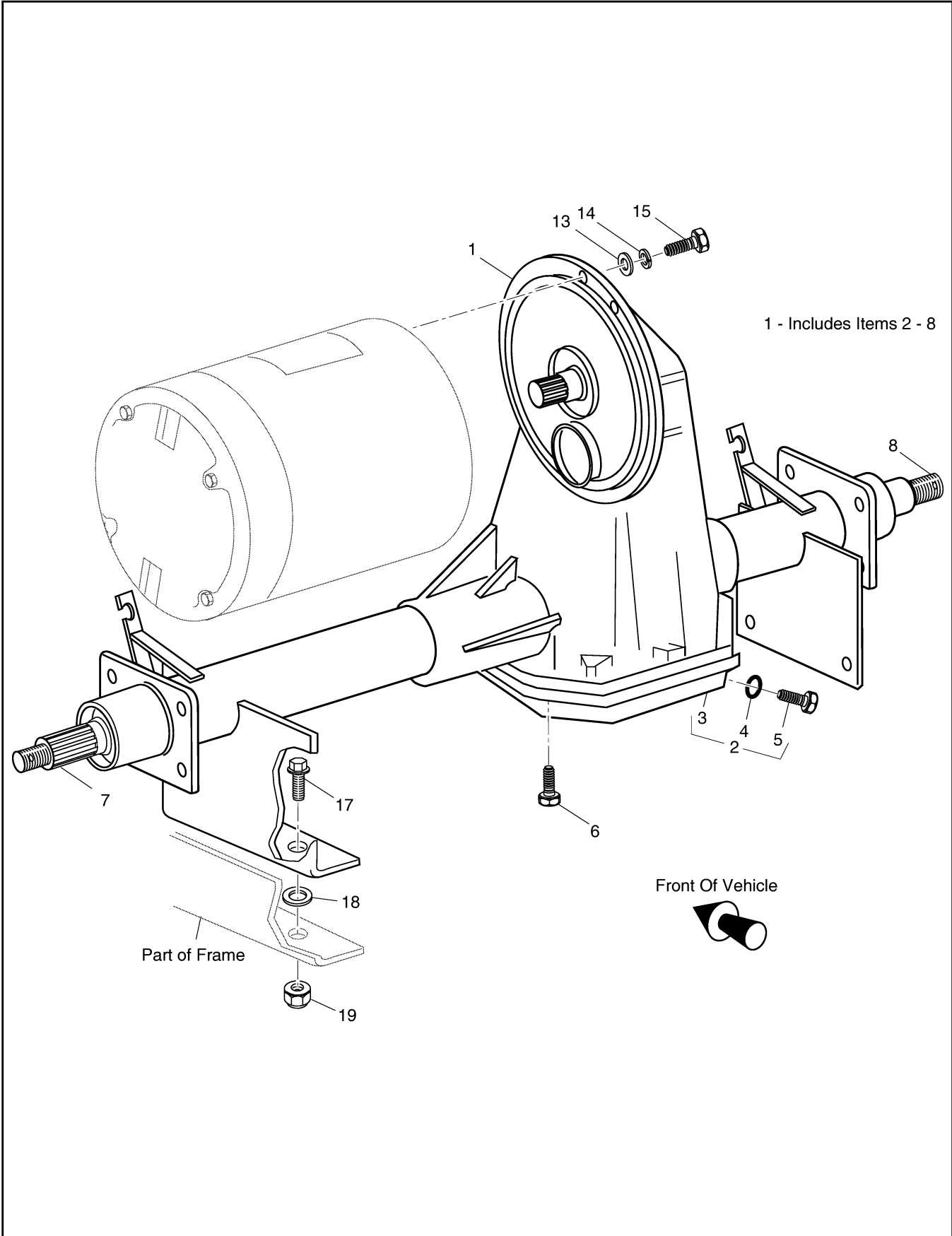
When ordering parts, please specify the model and serial number of the product.

\* Indicates a component that is not available as an individual part.

G\*\* Indicates consult Customer Service Department for additional information.

ITEM	PART NO.	1 2 3 4 5	DESCRIPTION	QTY.
1	73124-G02		MOTOR, FLEET SPEED, NON-VENTED (INCLUDES ITEMS 2 - 11) .....	1
2	73120-G01		ARMATURE .....	1
3	73120-G29		FRAME AND FIELD COIL (INCLUDES HARDWARE) .....	1
4	73120-G03		BRUSH SPRING.....	4
5	73120-G15		BRUSH PLATE AND BOX .....	1
6	73120-G25		BRUSH REPLACEMENT KIT (INCLUDES HARDWARE) .....	1
7	73120-G06		SNAP RING .....	1
8	73120-G07		BEARING.....	1
9	73120-G08		COVER COMMUTATOR END .....	1
10	73120-G09		COVER PLATE AND SCREW .....	1
11	73120-G16		CAP.....	1
12				
13				
14	24261-G1		BUMPER SPLINE.....	1

## REAR AXLE



# REAR AXLE

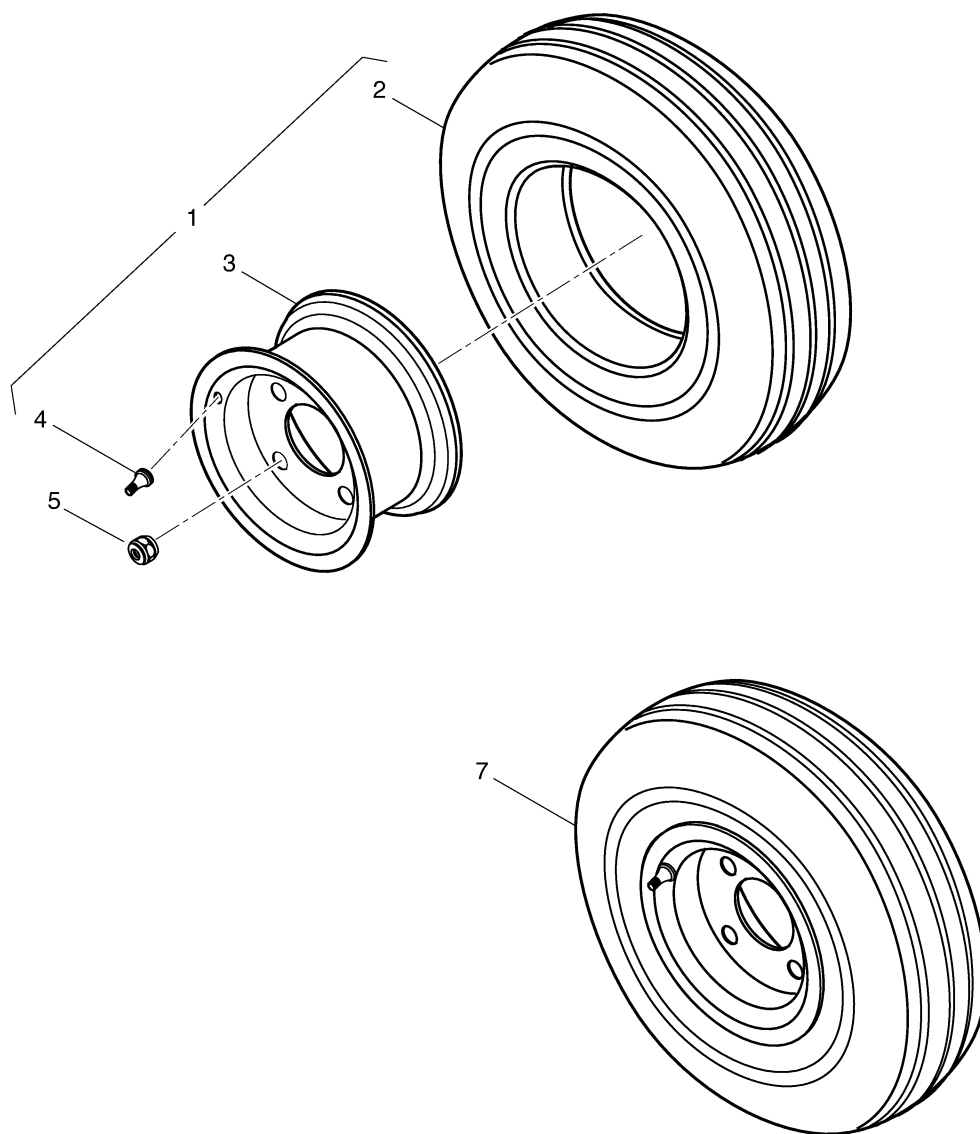
When ordering parts, please specify the model and serial number of the product.

\* Indicates a component that is not available as an individual part.

G\*\* Indicates consult Customer Service Department for additional information.

ITEM	PART NO.	1 2 3 4 5	DESCRIPTION	QTY.
1	33698-G01		REAR AXLE ASSEMBLY (INCLUDES ITEMS 2 - 8) .....	1
2	28584-G01		DIFFERENTIAL COVER ASSEMBLY (INCLUDES ITEMS 3 - 5).....	1
3	28583-G01		DIFFERENTIAL COVER .....	1
4	28582-G01		O-RING .....	1
5	28581-G01		FILL/CHECK PLUG.....	1
6	15558-G1		BOLT, 5/16 - 18 X 3/4" LG.....	10
7	20377-G5		AXLE SHAFT (LEFT SIDE) .....	1
8	20377-G6		AXLE SHAFT (RIGHT SIDE) .....	1
9				
10				
11				
12				
13	01110-G01		WASHER, 1/4" (STAINLESS STEEL) .....	3
14	00664-G7		LOCK WASHER, 1/4" (STAINLESS STEEL) .....	3
15	00797-G2		BOLT, 1/4 - 20 X 1 1/4" LG .....	3
16				
17	00427-G2		BOLT, 3/8 - 16 X 1 1/4" LG .....	4
18	00643-G1		WASHER, 3/8" .....	4
19	11098-G5		NUT, 3/8 - 16 .....	4

## WHEELS AND TIRES



## WHEELS AND TIRES

\* Indicates a component that is not available as an individual part.

ITEM	DATE	DESCRIPTION
------	------	-------------

ITEM	PART NO.	1	2	3	4	5	DESCRIPTION	QTY.
1	33779-G01						TIRE AND WHEEL ASSEMBLY (INCLUDES ITEMS 2 - 4) .....	3
2	*						TIRE, 4.80 - 8.....	1
3	33678-G01						WHEEL RIM, 4 LUG .....	1
4	11657-G1						VALVE STEM.....	1
5	14723-G1						LUG NUT, 1/2 - 20 .....	4
6								
7	35153-G01						TIRE AND WHEEL ASSEMBLY (4.8 - 8 FOAM FILLED).....	3





***CUSHMAN***  
A Textron Company



A Textron Company

E-Z-GO Division of Textron, Inc.  
P.O. Box 388 Augusta, Georgia 30903-0388 USA  
Inside USA Phone: 1-800-241-5855, FAX: 1-800-448-8124  
Outside USA Phone: 010-1-706-798-4311, FAX: 010-1-706-771-4609

Copyrighted Material  
This manual may not be reproduced in whole or  
in part without the express permission of  
E-Z-GO Division of Textron, Inc.  
Technical Communications Department